

2022-23 Winter MPSSAA State Tournament Bulletins

Respect



The Game

**Basketball
Indoor Track
Swimming & Diving
Wrestling**

Respect




The Game



MINDS IN MOTION

The Minds in Motion certificate is a scholar-athlete honor roll award provided by the MPSSAA to every school on request. Certificates are to be distributed following each of the three sports seasons by high school athletic departments to those student-athletes who achieve a 3.25 GPA, or higher, while participating in a school-sponsored sport.

MINDS IN MOTION	
SCHOLAR ATHLETE AWARD	
Presented to _____	
	_____
	for achieving a 3.25 or better
	Grade Point Average while participating
	in Interscholastic Athletics
	during _____ season.
	YEAR SPORT
_____	<i>R. Andrew Warner</i>
Principal	Executive Director MPSSAA

To order your school's Minds in Motion Certificates,
School Athletic Directors should contact the
MPSSAA office or go to:
www.mpssaa.org/membership-services

TOURNAMENT BULLETINS

Maryland Public Secondary Schools Athletic Association
200 West Baltimore Street - Baltimore, MD 21201



R. Andrew Warner, Executive Director - (410) 767-0555

Section I MPSSAA 2022-23 Winter Bulletins

State Tournament Policies	2
Responsibilities of Schools	
Participating in a Tournament	4
Complimentary Passes	5
Radio and Television	5
Medical Personnel	5
Police Protection	5
Reimbursement Information	5
Health and Safety	6

Section II Sport Bulletins

Basketball	9
Indoor Track	19
Swimming	30
Wrestling	39



MPSSAA Bulletins

WINTER 2022-2023

This publication contains information pertaining to state tournament competition for the winter season. It is divided into two sections. The first section contains information pertinent to all tournaments. The second section contains the particular rules for each sport.

Schools will be provided with enough copies of the booklet for the principal, athletic director, and each head coach for the winter season. It is the school's responsibility to read and follow the guidelines provided in this publication.

I. STATE TOURNAMENT POLICIES

- A. The Maryland Public Secondary Schools Athletic Association games or tournament committees, each representing all of the nine districts shall administer and supervise tournaments in the various sports at the district, region, and state level.
- B. All participating schools shall abide by the rules established by the tournament committee.
- C. Although certain aspects of a tournament may vary from year to year, the following basic policies shall be observed by all tournament committees:
 - 1. A tournament may not interfere with local school policy.
 - 2. A school or school system has the privilege and right to decide whether or not it will participate in a tournament.
 - 3. A school shall compete in its classification when a tournament is so structured.
 - 4. Student-athletes may only participate in MPSSAA post-season events when their regular season coincides with the season in which the state championship is held.
 - 5. Certified and approved officials organizations shall be assigned games in a fair, equitable, and nondiscriminatory manner.
 - 6. All awards and recognition shall conform to MPSSAA Bylaw .08.
 - 7. A tournament committee shall make every effort to establish game sites that minimize extensive travel for participating teams.
 - 8. All policy and procedure changes for a state tournament shall be subject to the approval of the MPSSAA Executive Council with the Association's tournament committee serving in an advisory capacity. Emergency decisions on tournament policies and procedures may be made by the MPSSAA Executive Director.
 - 9. When a contestant is found ineligible during the progress of a tournament, the contest last played shall be forfeited, and the team that was defeated shall take its place.
 - 10. All-star teams or best individual athlete awards MAY NOT be selected from an approved tournament.
 - 11. Sports at the state tournament level shall be governed by approved game rules.
 - 12. If a team or any student participating in state tournament play leaves the field of play before the com-

pletion of a contest, or fails to continue play when eligible to do so, or is guilty of “misconduct detrimental to the tournament”, then the team, coach, contestant or contestants may be suspended from further participation in the current tournament and from the same tournament in the succeeding year, upon the determination of the tournament committee and the executive director. ***In addition, refer to section labeled “Misconduct Detrimental to a Tournament” (page 34 in the current MPSSAA Handbook).***

13. The rules of the Association do not provide authority to order games replayed. Protests arising from decisions and interpretations by officials during the game will not be considered. Officials decisions and interpretations are final.
14. All suspended games will be continued from the point at which they were interrupted.
15. Expansion of any sport to the state level shall be recommended by the MPSSAA's board of control and approved by the state superintendent of schools after consultation with local superintendents of schools.
16. Unmanned Aircraft Systems (Drones): In the interest of public safety and competitive equity, the use of unmanned aircraft systems (drones) is prohibited during MPSSAA district, region, and state tournament competition. Unmanned aircraft systems may not operate in airspace over host school grounds or facilities conducting MPSSAA events.

D. Region Seeding

1. Unless otherwise stated in this bulletin in a particular sport section, teams are seeded in the region tournament according to the best regular season winning percentage. If two teams are tied, the first tie-breaker is head-to head results. If teams are still tied, a coin toss determines the higher seed.
2. When applying tie breaking procedures in instances where three or more teams are tied for a particular seed, the criteria must affect all three (or more) teams equally or proceed to the next tie breaker criteria. For instance, if team A beat team B, and team B beat team C, but team A and team C did not play, this criteria does not affect all teams equally – proceed to the next criteria. Also, in instances where three or more teams are tied, and a particular criteria applies to all three equally, the criteria may only distinguish the one team among the group that earns the higher seed. The remaining two (or more) teams are then reevaluated beginning with the first criteria.
3. When calculating winning percentage, the total number of regular season wins (1 point each) and ties (1/2 point each) are added and then divided by the total number of games completed (divisor). In the following sports, if a team has not completed the minimum number of games specified, the divisor becomes the number indicated below (instead of the total number of games).

(i.e. If a soccer team is 7-1-1, its winning percentage is $7.5/9 = 83.3\%$. If a soccer team has a record of 7-0-1 with only 8 complete games, its winning percentage is $7/9 = 77.7\%$.)

SPORT	MAXIMUM	MINIMUM	SPORT	MAXIMUM	MINIMUM
Baseball	18	14	Lacrosse	12	9
Basketball.....	20	15	Soccer	12	9
Field Hockey	12	9	Softball	18	14
Football	10	8	Volleyball.....	15	12

4. The policy regarding a “NON-GAME/FORFEIT” on a team schedule is as follows:

a.) In order for a contest to be declared a forfeit, it must satisfy the following criteria:

1. There must be a written contract, signed by both Principals, including the time, place, and date of the contest. For teams participating in the same league or conference, the official league or conference schedule shall serve the purpose of a written contract.
2. The head county/league/conference administrator of both schools shall agree that the contest be regarded as a forfeit. In instances where the head administrators do not agree, the MPSSAA Executive Director shall decide. For games against out-of-state teams, the Executive Director (or equivalent) of both states shall agree in order for the contest to be declared a forfeit.

3. The forfeit shall be applied to the season records of both participating teams (a win by forfeit for one team, a loss by forfeit for the other).
- b.) A game may be declared a forfeit under the following circumstances:
1. A team deliberately or inadvertently fails to arrive at the designated site/time (except for extraordinary circumstances or unless mutually agreed upon in advance by the participating schools). Extreme traffic or a bus failing to arrive would be examples of “extraordinary circumstances”. This provision does not include complications arising from rescheduling a game which was previously postponed or cancelled.
 2. A team disbands either temporarily or permanently. Under this provision, a team must have played at least one regular season game in order for an opponent(s) to be awarded a forfeit.
 3. A team or individual player on a team violates MPSSAA regulations. Under this provision, the MPSSAA Handbook specifies conditions under which a forfeit may be declared.
 4. One or both teams are unable to complete a contest according to prevailing MPSSAA or NFHS rules.
5. Once the region seeding is complete and the brackets released, any corrections due to errors in records or winning percentages will only be made up until 10 AM the following morning. No changes will be made to the seeding or brackets after that time.

II. RESPONSIBILITIES OF SCHOOLS PARTICIPATING IN A TOURNAMENT

- A. It is the responsibility of schools to work with region directors to accurately report schedules, results and records for the purpose of tournament seeding. Failure to do so in a timely and accurate manner significantly hinders the smooth operation of the state tournament and may be considered “misconduct detrimental to the tournament” as outlined in the MPSSAA Handbook.
- B. Postponed contests shall be rescheduled on the next available (nonscheduled) playing date. Any disagreements shall be referred to the appropriate local supervisor(s) for resolution.
- C. All schools entering a tournament must agree to arrangements made by its tournament committee. This includes the time and place of each game and the selection of officials. All games will be played under the rules of the MPSSAA. In cases not covered by written regulations, the tournament committee in charge is empowered to make decisions.
 1. A school may not request a postponement of any tournament game because of illness, injury, or unavailability of some of its players.
 2. A school is responsible for seeing that all its players are protected by insurance in the event of injury.
- D. Games will be played on a basis of shared responsibilities. Personnel from the visiting schools must accept their joint responsibilities with the persons in charge for the supervision and maintenance of good behavior on the part of the students, spectators, and participants. Good sportsmanship, exemplary behavior, and the protection of property are of primary importance before, during, and following each game. It is recommended that faculty representatives of the competing teams anticipate and study problems that could arise from such contests and plan cooperatively to deal with these problems.
- E. Schools hosting region tournament games are responsible to provide a qualified game manager other than the participating coach.
- F. The MPSSAA provides a hard copy of the NFHS rulebooks and electronic copies of the MPSSAA Bulletins to all member schools each season. Schools are expected to maintain access to those publications and require teams to have them available at all playoff contests. It is highly recommended that these materials are presented to officials and reviewed at pre-game meetings to verify their availability as a reference during the contest. For instance, unique overtime procedures outlined in a sport-specific bulletin should be reviewed.
- G. The possession or use of any alcoholic beverage or nonalcoholic substitute (i.e. nonalcoholic champagne) is considered to be conduct detrimental to a tournament. An individual or team using such products in any

form of consumption or celebration will be subject to disciplinary action.

III. POINT OF EMPHASIS

The MPSSAA would like to make a point of emphasis for coaches. Coaches are reminded that you set the tone for your team and are the foremost influential figures representing your school. Your coaching attire and actions should reflect a professional approach that signifies a respect for the game, respect for your school and respect for yourself.

IV. COMPLIMENTARY PASSES

- A. Complimentary passes are provided for coaches and administrators only.
 - 1. Passes are distributed through local supervisors.
 - 2. Each pass should have the bearer's name printed on the pass prior to distribution.
 - 3. A valid driver's license is required to be displayed with each pass.
 - 4. Admission to Regular Season Events is subject to Local School System Rules.
- B. Additional special passes will be distributed for some tournaments. Those passes will admit the bearer only.
- C. All other individuals age 7 years or older will be charged admission to any MPSSAA event.

V. RADIO AND TELEVISION

Radio and television coverage of the playoffs and championship games will be allowed by any station that is awarded a contract by the MPSSAA. Radio and television contracts must be awarded through the Executive Director. Schools will be notified by the Executive Director of approved broadcasters.

VI. MEDICAL PERSONNEL

The MPSSAA has budgeted for qualified medical personnel to be employed at each semifinal and final game. Host schools should employ those medical personnel from local sources. Medical personnel will be paid at the local rate. Schools entering the tournament agree to accept the recommendation of the medical professional assigned by the MPSSAA to cover the event.

VII. POLICE PROTECTION

The game director at each site will employ adequate police protection to supervise parking lots and assist with crowd control.

VIII. SCHOOL REIMBURSEMENT

The MPSSAA Finance Committee has authorized set funding to be distributed to MPSSAA Districts for the purpose of assisting with some of the travel expenses incurred by schools participating in regional and state tournaments. Each local district shall determine their local process for distribution of reimbursement funds based on participation in MPSSAA regional and state competitions.

HEALTH AND SAFETY

I GENERAL HEALTH AND SAFETY POLICIES AND PROCEDURES

- A. All participants, coaches, officials, athletic administrators, spectators, and any other individual present at any interscholastic athletic practice or competition must adhere to the local school system policies pertaining to health and safety policies.
- B. **Multi-Jurisdictional Competition** - During any multi-jurisdictional competition, the policies and procedures of the hosting sites jurisdiction shall be followed by all competing schools. When conflicts arise in which representatives, including but not limited to coaches, participants, and spectators, are not following the policies and procedures of the local school system, the site director in collaboration with school administration shall have the authority to:
 - a. Initially provide a warning to those not in compliance to adhere to the local school system policies.
 - b. Suspend the competition and refer the conflict to Supervisors of Athletics for resolution.Unresolved matters shall be referred to the the MPSSAA Executive Director.
- C. **Shared Responsibility** - Games and Events will be contested on the basis of shared responsibilities. Personnel from the visiting schools must accept their joint responsibilities with the persons in charge for the supervision and maintenance of behavior on the part of students, spectators, and participants. This includes health and safety policies and procedures, good sportsmanship, exemplary behavior, and protection of property before, during and after each contest.
- D. **Tournament Considerations** - If a school/team must withdraw from the state tournament due to health related matters, the team scheduled to play next will receive a bye/forfeit and advance to the subsequent round. A school may not request a postponement of any tournament game because of illness, injury, or unavailability of some of its players or coaches.

II EMERGENCY ACTION PLANS, AND AED REQUIREMENTS

- A. All member schools and school systems are required to be in compliance with Maryland House Bill 836 (2022 General Session) effective July 1, 2022.
 - 1. Each High School shall develop a venue-specific emergency action plan:
 - i. for the operation and use of automatic external defibrillators that meets the requirements of Education Article 7-450;
 - ii. for heat acclimatization meets the requirements of Education Article 7-450;
 - iii. for coordination of care for other emergent injuries, including cervical spinal injury, concussion and closed head injury, major orthopedic injuries, and severe weather for outdoor facilities;
 - iv. that is posted at each athletic facility at the school;
 - v. that is available on the school's website;
 - vi. that is distributed to the member school coaching staff; and
 - vii. that is rehearsed in person and interactively by all of the coaching staff of each sport before each of their respective seasons.
 - 2. Local school systems shall adopt preseason-practice heat acclimatization guidelines consistent with the model policy found on page 7 of this document and listed on the MPSSAA health and safety page. These guidelines include ensuring each school is properly prepared and equipped to initiate cold water immersion for the treatment of exertional heat stroke.
 - 3. Automatic External Defibrillator (AED) is provided on-site and located within a brief walk from an athletic practice or event. An AED must be freely accessible during all school functions.
- B. All members of the coaching staff are to be trained in the operation and use of an automated external defibrillator, all members are trained in cold water immersion, and a trained member of the coaching staff is present at all athletic practices and events on school property.

STATE CHAMPIONSHIP GEAR

SHOP NOW





Spalding Precision TF 1000

The Official Ball of the MPSSAA



MPSSAA BASKETBALL BULLETIN

Basketball State Tournament
March 9-11, 2023 - University of Maryland

I. GENERAL INFORMATION

- A. The Maryland Public Secondary Schools Athletic Association is the official governing body for the Basketball tournament. Plans for the tournament were formulated by the State Basketball Committee and approved by the Board of Control.
- B. Schools choosing to enter the tournament have the responsibility for reading and adhering to the rules and regulations stated in the front section of this publication as well as those appearing within this Basketball Bulletin. Unless specifically stated, all rules and regulations stipulated in the NFHS Basketball rule book will be followed.
- C. Eligibility rules for all participants are defined in MPSSAA Bylaw .02, found in the current MPSSAA Handbook.
- D. General regulations for all state tournaments are contained in MPSSAA Bylaw .07, found in both the current Handbook and in the front section of this publication.
- E. Games postponed during the regular season shall be made up on the first available date and in the order originally scheduled. Subsequent games shall not be moved. Local supervisor(s) of athletics shall be consulted and will make final decisions on postponed games.
- F. The MPSSAA State Basketball Committees have approved the use of S.A.G.A. timing devices during the regular season and region tournaments, provided that both teams agree. These devices will be used at the state semifinals and finals.
- G. The State Basketball Committees are requiring the use of the Spalding TF-1000 Precision basketball during the playoffs AND the state tournament. It is highly recommended that this same ball be used during the regular season as well.
- H. By state adoption, the State Basketball Committees have adopted the following rule regarding the use of running time. Once a 35-point differential exists in the second half, the following changes, and only these changes, will be made regarding rules which determine when the clock will and will not be stopped.
1. An official's time-out for an injured participant.
 2. A charged (team) time-out occurs.
 3. A score occurs that reduces the point spread to less than 35 points (in which case regular timing procedures will be used).
 4. A period ends.
 5. Free throws are taken.

2022-2023 BASKETBALL TIME LINE

	REGION TOURNAMENTS	STATE TOURNAMENTS
Dec. 5.....First play date	Feb. 24 (G)Region Qtrfinals	Mar. 3 (G)Quarterfinals
Feb. 20Last play date for tournament seeding	Feb. 25 (B)Region Qtrfinals (or doubleheader on Feb. 25)	Mar. 4 (B & G)Quarterfinals
Feb. 21Tournament seeding	Feb. 27 (G)Region Semis	Mar. 7 (B & G).....Semifinals
Feb. 23Last play date	Feb. 28 (B)Region Semis	Mar. 8 (B & G).....Semifinals
Mar. 2 (G); Mar. 3 (B)		Mar. 9 (B & G)Finals
.....Application deadlines	Mar. 1 (G)Region Finals	Mar. 10 (B & G)Finals
for tournament qualifiers	Mar. 2 (B)Region Finals	Mar. 11 (B & G)Finals
		Apr. 15Reimbursement request due

II. TOURNAMENT ENTRY INFORMATION

A. Tournament Organization

1. Every school is automatically in the tournament unless the MPSSAA office receives written notification to the contrary. Request for withdrawal shall be by letter, signed by the school principal.
2. A TEAM ENTRY FORM for the state semifinals and finals must be filled out online in the password protected member's section of MPSSAA.org by teams winning their region final.
 - a. The girls entry must be submitted online no later than 4 p.m. on Thursday, March 2.
 - b. The boys entry must be submitted online no later than 4 p.m. on Friday, March 3.

III. REGION AND STATE TOURNAMENTS

A. Tournament Organization

1. Each region will conduct a single elimination tournament with the champion advancing to state play.
2. Schools may not compete in any contest after February 23 that is not part of the state tournament.
3. All references to the official party in this bulletin shall be defined as follows:
 - a. The official party is limited to 21 persons and shall consist of authorized coaches, players, and managers of high school age or older.
 - b. Only those in the official party are permitted on the bench or in the locker room area.
4. No team may dress more than 15 players.
5. The designated home team will wear the white uniform. The designated visiting team will wear the dark uniform. **Bring both colors.**
6. The coach is in charge of the bench. The coach's conduct should be exemplary, as it sets a pattern for both spectators and players.

B. Playing rules, except as modified below, shall be in accordance with the current National Federation rules.

1. Boys and girls shall use a 30-second shot clock.
2. Girls will not have a 10-second count to move the ball from back court to front court.

C. General Policies

1. The official party will only be admitted in total and accompanied by its coach.
2. Per NFHS rules, noisemakers and other distractions, (i.e., whistles, sirens, horns, bells, clappers, 'thunder sticks', megaphones, balloons, etc.), are not permitted in the gymnasium at any time.
3. When local jurisdictions allow and can accommodate pep bands, 45 band members will be admitted free. They must be accompanied by a faculty sponsor and adhere to the following guidelines:
 - a. Twenty minutes prior to each game, pep bands will be allowed to play for eight minutes each. The home team will play the first eight minutes and the visiting team will play the next eight minutes. The remaining four minutes will be used for player introductions.
 - b. Once a game starts, the pep bands will alternate playing only when time is out. Bands will coordinate their playing with the cheerleaders from their school.

- c. Pep bands must remain in their designated areas. Bands ARE NOT permitted on the court.
- 4. When local jurisdictions allow and can accommodate, cheerleaders from each of the participating schools will be admitted free of charge only if they are in complete uniform and accompanied by a maximum of two authorized coaches. Local jurisdictions may set their own guidelines at region tournaments on the number of cheerleaders permitted on the floor at any one time.
- 5. Mascots are restricted to the designated half of the baseline area, except when performing on the court during pregame team introductions or full timeouts. During play, mascots should remain with their teams in the designated cheer area, away from the goal standard. At no time shall a mascot enter the general public seating area or interact with the opposing team's mascot.
- 6. The State Basketball Committee urges all schools to conduct a school-wide assembly prior to participation in postseason play. School personnel, students, and parents should be aware of their responsibilities as spectators. Information concerning crowd control and spectator behavior will be sent in the ***Last Minute Bulletin*** to region champions.
- 7. Teams are reminded they are guests of the host site and the use of drinks other than for consumption (example: dumping water on coaches) is prohibited.

IV. REGION TOURNAMENT

A. Tournament Organization

- 1. The region director is responsible for the assignment of officials and the notification of schools as to the tournament bracket, site, and starting times.
- 2. The seeding of bracket positions will take place on Tuesday, February 21. Tournament pairings will appear on the MPSSAA web site <mpssaa.org> later that day.
 - a. Region directors will verify and submit the official records of all region teams through February 20 to their respective State Committee directors.
 - b. All teams in each region will be seeded as determined by regular season winning percentage, excluding the one additional tournament and any city, county, or conference championship.
 - c. Teams with less than 15 varsity games played will be seeded based on a regular season winning percentage using a divisor of 15 games.
 - d. Ties among teams in a region will be first broken by head-to-head competition to determine the higher seed. This applies if all tied teams meet the criteria. If head-to-head does not break the tie, a coin toss will be used to determine the order of seeding.
 - e. The higher-placed team is defined as one who occupies the lower-numbered line position (the favored position), on the bracket in any given round.
- 3. Unless a specific alternative plan has been approved all region games will be played at the site of the higher seed throughout the tournament.
- 4. If schedule changes are necessary for a. through c. below, each region director, in consultation with the local Supervisor(s) of Athletics, State Tournament Director, and the MPSSAA Executive Director will establish the best schedule, site, and game combination that will expedite the tournament in that particular region.
 - a. The starting time for weekday contests when there is a single contest shall be any time after 5 p.m. and the starting time for a Saturday contest will be any time after 12 p.m. Local Supervisors of Athletics shall be consulted and make the final decision when conflicts occur.

- b. Doubleheaders will be played in the first round where boys and girls match-ups exist for both schools. Doubleheaders will also be used to make-up postponed contests. The early game shall begin anytime after 5 p.m., with the late game beginning 20 minutes after the conclusion of the early game. Local school systems shall decide the order of contests for doubleheaders.
- c. Single games shall be scheduled as follows:

SCHEDULE	GIRLS	BOYS
Region Quarterfinals*Friday, Feb. 24	Saturday, Feb. 25
Region SemifinalsMonday, Feb. 27	Tuesday, Feb. 28
Region FinalsWednesday, Mar. 1	Thursday, Mar. 2

*** NOTE: The boys region quarterfinal games scheduled for Saturday, February 25 may be played on Friday, February 24. Every effort shall be made to avoid conflicts between the boys and girls games. Local Supervisors of Athletics shall be consulted and will make the final decision when conflicts occur. All other contests must be played on the date listed above.**

- d. Region tournament directors and local supervisors of athletics shall be consulted and will make final decisions on postponed games.
- 5. Updated results shall be emailed to the respective State Directors by region directors as the tournament progresses.
- 6. For the region quarterfinals and semifinals, the region director shall have assigned a two-person crew and a table official from the officials board local to the designated home team. The table official will supervise the scoring table. Local supervisors of athletics may decide to use three-person crews in the first two regional rounds of the tournament. When a three-person crew is used, a table official may be assigned.
- 7. For the region finals, the region director shall have assigned a three-person crew from the officials board local to the designated home team. A table official MAY be assigned.
- 8. An experienced timer will be assigned as the clock operator. "Neutral" timers with experience may also be assigned in lieu of the usual clock operator as determined by local Supervisors of Athletics.
- 9. Pregame warm-up
 - a. At neutral or central sites, the designated home team will sit at the bench to the left of the scorer's table, when facing it, and warm up according to National Federation rules.
 - b. At the school site (entire school campus) of any regional playoff games, neither participating team may take part in any individual or team practice utilizing basketballs from 90 minutes prior to the designated tip-off until the 20-minute warm-up period immediately preceding the game.
- 10. For the region quarterfinal games, local MPSSAA districts will collect all revenues and pay approved expenses.
- 11. For region final games, the MPSSAA will receive all revenues and pay approved expenses.

B. General Policies

- 1. Individuals 7 years and older will be charged an admission of \$6 per session, regardless of the number of games played in each session.
- 2. The following recommendations are made for admittance of school personnel and issuance of passes for tournament games:
 - a. The official party (identified in Section II.A.13) will be admitted free at a designated entrance, after being identified by the coach.

- b. Cheerleaders, a mascot, and their two authorized coaches will be admitted free at the door used by the public.
- c. Only the person whose name appears on the state pass will be admitted (See Complimentary Passes on Page 5 of the Winter Bulletin for more information).
- 3. Only cheerleaders are permitted to use megaphones. Cheerleaders must follow NFHS Guidelines for cheering in a gymnasium.
- 4. No signs or banners may be carried in by spectators. Team signs may be posted by designated personnel 20 minutes prior to game time.
- 5. Local jurisdictions may set their own guidelines on the use of flash photography during game action.

V. STATE TOURNAMENT

A. State Quarterfinals

- 1. The region champions from each classification shall advance to a state quarterfinal round.
- 2. The eight region champions will be seeded 1-8 based on their regular season winning percentage used to seed each region. Ties among teams in the state quarterfinals will be first broken by head-to-head competition to determine the higher seed. This applies if all tied teams meet the criteria. If head-to-head does not break the tie, a coin toss will be used to determine the order of seeding.
- 3. Unless a specific alternate plan has been approved, all state quarterfinal games will be played at the site of the higher seed under the following terms:
 - a. The girls state quarterfinal games shall be played on Friday, March 3 and the boys state quarterfinal games shall be played on Saturday, March 4.
 - b. The girls state quarterfinal games scheduled on Friday, March 3 may be moved to Saturday, March 4 for travel considerations.
 - c. When setting game times hosting sites must be mindful of other school activities and provide appropriate travel time for any schools with students taking the ACT or SAT Tests.
 - d. Local Supervisors of Athletics shall be contacted and make the final decision when conflicts occur.
- 4. A three-person officiating crew from the association local to the higher seeded team will be assigned to the state quarterfinal contest. A table official may be assigned.
- 5. Admission to the state quarterfinals will be \$6.00 for ages 7 and over.
- 6. For state quarterfinal games, the MPSSAA will receive all revenues and pay approved expenses through the district local to the hosting site.
- 7. The head coach of each state quarterfinal winner must complete the media form (found on the basketball page of MPSSAA.org) and email it to their respective state committee chair.

B. State Semifinals and Finals

- 1. The winners of the state quarterfinal round shall advance to the state semifinals. The girls and boys will play regional sites on Tuesday, March 7 and Wednesday, March 8.
 - a. The winners of the No. 1 versus No. 8 seeded game will play the winners of the No. 4 versus No. 5 seeded game in a state semifinal contest.
 - b. The winners of the No. 2 versus No. 7 seeded game will play the winners of the No. 3 versus No. 6 seeded game in a state semifinal contest.

- c. The winners of the two state semifinal contests will meet in the state championship game at the University of Maryland - College Park in the Xfinity Center.
2. Member schools shall not schedule practice or scrimmage sessions at the sites of final championship games.
3. Directions (**Please also direct your school's community to the "Fan Focus" on MPSSAA.org**):

UMD-College Park — *Please adhere to all campus parking regulations.* From I-95/I-495 (Capital Beltway): Exit Rte. 1 South to MD. Rte. 193 (University Blvd.) - West one mile to left on Paint Branch Parkway. Follow signs to Xfinity Center parking.
4. Individuals 7 years and older will be charged an admission of \$10.00 for the state semifinals and finals. Tickets will be sold exclusively online through www.mpssaa.org.

<p style="text-align: center;">STATE SEMIFINAL SCHEDULE REGIONAL SITES</p> <p style="text-align: center;">Tuesday, March 7—State Semifinals Game Times 5:00 and 7:30 PM Classifications TBA</p> <p style="text-align: center;">Wednesday, March 8—State Semifinals Game Times 5:00 and 7:30 PM Classifications TBA</p> <p style="text-align: center;">State Semifinal Sites</p> <p style="text-align: center;">Henry A. Wise High School North Point High School Paint Branch High School Montgomery Blair High School Richard Montgomery High School Harford Community College</p>	<p style="text-align: center;">STATE FINAL SCHEDULE UNIVERSITY OF MARYLAND</p> <p style="text-align: center;">Thursday, March 9—State Finals 6 p.m. — Class and Teams TBA 8 p.m. — Class and Teams TBA</p> <p style="text-align: center;">Friday, March 10—State Finals 6 p.m. — Class and Teams TBA 8 p.m. — Class and Teams TBA</p> <p style="text-align: center;">Saturday, March 11—State Finals 1 p.m. — Class and Teams TBA 3 p.m. — Class and Teams TBA 6 p.m. — Class and Teams TBA 8 p.m. — Class and Teams TBA</p>
---	--

5. Officials will be instructed before the game not to tolerate any unsportsmanlike conduct by coaches or players. A public expression of dissent from an official's judgment usually excites the spectators and often results in a technical foul. The coach's conduct, more than any other person, should be exemplary so as to set the pattern for the attitude of spectators.
 6. The Association will not be responsible for lost or stolen articles. It is recommended that players give their valuables to team managers for safekeeping.
 7. The home team will sit on the bench to the left of the scorers' table, when facing it, and will warm up according to National Federation rules.
 8. If a team withdraws or is withdrawn from the tournament, the team last defeated by the withdrawing team shall be asked to replace it, and so on. This does not apply if there is a COVID-19 situation, in which the Health and Safety guidelines on page 6 of this bulletin will apply.
 9. The Spalding TF-1000 Precision basketball will be the official ball for the state semifinals and finals.
- C. General Policies
1. The official team bench party (limited to 21 persons and consisting of authorized coaches, players, and managers of high school age or older) will only be admitted in total and accompanied by their coach.
 - a. Tournament personnel will issue a tournament pass to each member of the party.

- b. The cheerleader party shall consist of cheerleaders and mascot in uniform and a maximum of two authorized coaches.
 - c. The basketball party shall consist of a maximum of 21 persons, including coaches.
 - d. The entrance to Xfinity Center for the official party will be through the loading dock from Parking Lot 4B.
 - e. One photographer from each participating school will be allowed on the floor in addition to official press photographers. Spectators who wish to take photographs must do so from their seats.
2. Games will be played on the basis of shared responsibilities. School staff personnel of the visiting schools must accept their joint responsibilities with the persons in charge.
 - a. A MINIMUM of three school staff members must be on the floor to assist with their spectators. A list of names and positions should be emailed to the respective tournament director by the team's head coach by Monday, March 6th.
 - b. The State Basketball Committees strongly urge that an assembly be conducted prior to participation in region and state tournament games. All school personnel, students, and parents should be made aware of their responsibilities as to their conduct as spectators.
 3. Cheerleaders of opposing teams should get together before the game to work out arrangements for each school to cheer, unopposed by the other. The main court may be used during a full time-out, between quarters, and at halftime. Cheerleaders should use their megaphones only for addressing their own student body and never allow spectators to take or use them.
 4. SIGNS ARE NOT PERMITTED FOR DISPLAY AT THE XFINITY CENTER.
 5. HAND-HELD SIGNS may be displayed at the tournaments. Obscene or derogatory signs will be confiscated. Signs may not be carried through the stands as a means of taunting other spectators. Principals and faculty members of participating schools are expected to enforce this regulation.
 6. No outside food or drink is permitted to be carried into the tournament site.
 7. All schools are considered "visitors" when playing in the state tournament. For purposes of crowd control, the principal and school personnel brought to playoff sites should be alert to detect and correct or discipline any unsafe or unruly behavior of their spectators.
 8. The State Basketball Committee will recognize the school which displays the best overall sportsmanship while participating in its respective tournament with a Sportsmanship Award. Each school's coaches, players, cheerleaders, mascots, bands and spectators will be graded on the level of sportsmanship they project. Immediately following the last game, the award will be presented to the principal of the school achieving the highest average score.

D. Officials

A three-person crew will be assigned to State Semifinal and Final games.

PROJECTED MPSSAA BASKETBALL CHAMPIONSHIP DATES

2024 - March 7-9

2025 - March 13-15

2026 - March 12-14

STATE BASKETBALL COMMITTEE AND REGIONAL DIRECTORS ARE LISTED ON MPSSAA.ORG

2022-23 ALIGNMENT FOR BOYS AND GIRLS BASKETBALL

CLASS 4A-WEST		CLASS 4A-NORTH		CLASS 4A-SOUTH		CLASS 4A-EAST	
REGION I		REGION I		REGION I		REGION I	
1. Bethesda-Chevy Chase	Mtg	1. Catonsville	B Co	1. Bladensburg	PG	1. Arundel	AA
2. Richard Montgomery	Mtg	2. Dulaney	B Co	2. Duval	PG	2. Glen Burnie	AA
3. Thomas S. Wootton	Mtg	3. Dundalk	B Co	3. High Point	PG	3. Meade	AA
4. Walt Whitman	Mtg	4. Parkville	B Co	4. Laurel	PG	4. North County	AA
5. Walter Johnson	Mtg	5. Perry Hall	B Co	5. Northwestern (PG)	PG	5. Old Mill	AA
6. Winston Churchill	Mtg	6. Mergenthaler	Balt	6. Parkdale	PG	6. Reservoir	How
7. Western (Girls only)		7. Western (Girls only)	Balt				
REGION II		REGION II		REGION II		REGION II	
1. Urbana	Fre	1. Albert Einstein	Mtg	1. Bowie	PG	1. Annapolis	AA
2. Clarksburg	Mtg	2. James Blake	Mtg	2. C H Flowers	PG	2. Broadneck	AA
3. Gaithersburg	Mtg	3. Montgomery Blair	Mtg	3. Dr. Henry A Wise Jr	PG	3. Severna Park	AA
4. Northwest	Mtg	4. Northwood	Mtg	4. Eleanor Roosevelt	PG	4. South River	AA
5. Quince Orchard	Mtg	5. Paint Branch	Mtg	5. Suitland	PG	5. North Point	Cha
6. Seneca Valley	Mtg	6. Sherwood	Mtg			6. Leonardtown	StM
7. Wheaton	Mtg	7. Wheaton	Mtg				
CLASS 3A-WEST		CLASS 3A-NORTH		CLASS 3A-SOUTH		CLASS 3A-EAST	
REGION I		REGION I		REGION I		REGION I	
1. Frederick	Fre	1. Franklin	B Co	1. Huntingtown	Cal	1. Manchester Valley	Car
2. Linganore	Fre	2. Milford Mill Academy	B Co	2. Northern (Cal.)	Cal	2. Westminster	Car
3. Oakdale	Fre	3. Woodlawn	B Co	3. St. Charles	Cha	3. Centennial	How
4. Thomas Johnson	Fre	4. City	Balt	4. Chopticon	StM	4. Howard	How
5. Tuscarora	Fre	5. Digital Harbor	Balt	5. Great Mills	StM	5. Marriotts Ridge	How
6. North Hagerstown	Was	6. Patterson	Balt			6. Mt. Hebron	How
7. South Hagerstown	Was	7. Poly	Balt				
REGION II		REGION II		REGION II		REGION II	
1. Col. Zadok Magruder	Mtg	1. Kenwood	B Co	1. Chesapeake	AA	1. Atholton	How
2. Damascus	Mtg	2. Patapsco	B Co	2. Crofton	AA	2. Long Reach	How
3. John F. Kennedy	Mtg	3. Towson	B Co	3. Northeast (AA)	AA	3. Oakland Mills	How
4. Rockville	Mtg	4. Aberdeen	Hfd	4. Oxon Hill	PG	4. River Hill	How
5. Springbrook	Mtg	5. Bel Air	Hfd	5. J. M. Bennett	Wic	5. Wilde Lake	How
6. Watkins Mill	Mtg	6. C. Milton Wright	Hfd	6. Stephen Decatur	Wor		
7. Edgewood		7. Edgewood	Hfd				
CLASS 2A-WEST		CLASS 2A-NORTH		CLASS 2A-SOUTH		CLASS 2A-EAST	
REGION I		REGION I		REGION I		REGION I	
1. Southern (AA)	AA	1. Carver A&T	B Co	1. Crossland	PG	1. Elkton	Cec
2. Century	Car	2. Hereford	B Co	2. Fairmont Heights	PG	2. North East (Cecil)	Cec
3. Liberty	Car	3. Lansdowne	B Co	3. Frederick Douglass	PG	3. Rising Sun	Cec
4. South Carroll	Car	4. New Town	B Co	4. Friendly	PG	4. Fallston	Hfd
5. Winters Mill	Car	5. Owings Mills	B Co	5. Gwynn Park	PG	5. Harford Tech	Hfd
		6. Randallstown	B Co	6. Largo	PG	6. North Harford	Hfd
				7. Potomac	PG		
REGION II		REGION II		REGION II		REGION II	
1. Middletown	Fre	1. Carver Vo-Tech	Balt	1. Calvert	Cal	1. North Caroline	Cin
2. Walkersville	Fre	2. Dunbar	Balt	2. Patuxent	Cal	2. Kent Island	Qa
3. Glenelg	How	3. Southwestern (Boys only)	Balt	3. La Plata	Cha	3. Queen Anne's	Qa
4. Hammond	How	4. Chesapeake	B Co	4. Lackey	Cha	4. Easton	Tal
5. Poolesville	Mtg	5. Eastern Technical	B Co	5. McDonough	Cha	5. Parkside	Wic
6. Williamsport	Was	6. Overlea	B Co	6. Thomas Stone	Cha	6. Wicomico	Wic
		7. Sparrows Point	B Co	7. Westlake	Cha		
CLASS 1A-WEST		CLASS 1A-NORTH		CLASS 1A-SOUTH		CLASS 1A-EAST	
REGION I		REGION I		REGION I		REGION I	
1. Allegany	All	1. ACCE	Balt	1. Chesapeake Science Point	AA	1. Bohemia Manor	Cec
2. Fort Hill	All	2. Edmondson/Westside	Balt	2. Loch Raven	B Co	2. Perryville	Cec
3. Mountain Ridge	All	3. Forest Park	Balt	3. Pikesville	B Co	3. Colonel Richardson	Cin
4. Northern (Gar.)	G	4. Frederick Douglass-B	Balt	4. Western STES	B Co	4. Havre de Grace	Hfd
5. Southern (Gar.)	G	5. Green Street Academy	Balt	5. Francis Scott Key	Car	5. Joppatowne	Hfd
		6. New Era Academy (Boys only)	Balt			6. Patterson Mill	Hfd
		7. Seed School of Maryland	MD			7. Kent County	K
REGION II		REGION II		REGION II		REGION II	
1. Brunswick	Fre	1. Benjamin Franklin (Boys only)	Balt	1. Central	PG	1. Cambridge-SD	Dor
2. Catocin	Fre	2. Coppin Academy	Balt	2. CMIT South	PG	2. North Dorchester	Dor
3. Boonsboro	Was	3. Lake Clifton	Balt	3. Croom Vocational	PG	3. Crisfield	Som
4. Clear Spring	Was	4. National Academy (NAF)	Balt	4. Surrattsville	PG	4. Washington	Som
5. Hancock	Was	5. Reginald Lewis	Balt	5. CMIT North	PG	5. St. Michaels	Tal
6. Smithsburg	Was			6. College Park Academy	PG	6. Mardela	Wic
				7. Int. School at Largo	PG	7. Pocomoke	Wor
				8. Tall Oaks (Boys only)	PG	8. Snow Hill	Wor

GAME BREAKDOWNS THAT DON'T BREAK THE BUDGET

The MPSSAA is teaming up
with Pixellot's VidSwap to
save you time & money.



Get Exclusive District Pricing



Create Equity by Getting Breakdowns
for All Your Teams



Gain a Competitive Edge with
Fast 4-6 Hour Turnaround Time



Unlimited Storage

Contact:

jakes@pixellot.tv
551-804-0768

kikie@pixellot.tv
609-240-8133



WATCH HIGH SCHOOL SPORTS

LIVE

ON THE NFHS NETWORK



Stream
LIVE or On
Demand from
any device.

WWW.NFHSNETWORK.COM

SUBSCRIBE | FOLLOW | WATCH



Desktop



Mobile



Tablet



Connected Apps





MPSSAA INDOOR TRACK BULLETIN
State Championships - February 21-22, 2023
Prince George's Sports & Learning Complex - Landover

I. GENERAL INFORMATION

- A. The Maryland Public Secondary Schools Athletic Association is the official governing body for the Indoor Track championships. Plans for the championships were formulated by the State Indoor Track Committee and approved by the Board of Control.
- B. Schools choosing to enter the tournament have the responsibility for reading and adhering to the rules and regulations stated in the front section of this publication as well as those appearing within this Indoor Track Bulletin. Unless specifically stated, all rules and regulations stipulated in the NFHS Track and Field Rule Book will be followed.
- C. Eligibility rules for all participants are defined in MPSSAA Bylaw .02, found in the current MPSSAA Handbook.
- D. General regulations for all state tournaments are contained in MPSSAA Bylaw .07, found in both the current Handbook and in the front section of this publication.
- E. Coaches do a disservice to the sport and to competitors when they fail to scratch an athlete prior to the entry deadline with full knowledge that the athlete will be unable to compete in the entered event. Failure to afford those participation opportunities to other willing competitors may be considered misconduct detrimental to the tournament as outlined in the MPSSAA Handbook.
- F. Students may not compete as a representative of their school in any event that is not part of the state championship series after the date of the first statewide region meet.

II. REGION AND STATE MEETS

- A. Meet Organization
 - 1. The team or individual contestants must be accompanied to the meet by the coach or a designated representative.
 - 2. Teams competing at the PG Sportsplex will be admitted through the ground level team entrance at the back of the building.
 - 3. The meet director will make sure starting blocks are provided.
 - 4. Starting blocks WILL BE PERMITTED in the 55m and 55m high hurdle trials.
 - 5. Girls will precede boys in finals of all running events.
 - 6. Slower sections will precede the fast section.
 - 7. **The lane order for seeding the 300M and 4x200MR shall be 3-2-4.**

2022-2023 INDOOR TRACK TIME LINE		
Dec. 5First play date	REGION MEETS Region Meet Schedule Listed on Page 25	STATE MEETS
Entry Deadlines: See schedule on page 25.	Feb. 18Seeding of State Meets	Feb. 211A & 2A Meets Feb. 223A & 4A Meets Apr. 15Reimbursement request due

8. Time limits for the 1600m races shall be: Girls - 7:00; Boys - 6:00. Time limits in the 3200m shall be: Girls - 14:45; Boys - 12:45. Competitors who do not conclude their event within the allotted time will be allowed to finish and score. However, competitors who do not conclude their event within the allotted time will not be allowed to advance to states regardless of region placement.
9. Order of field events: Pole Vault (Boys, followed by Girls); High Jump (Girls, followed by Boys); Shot Put (Girls, followed by Boys).
10. Only shots approved by the appropriate official shall be used in competition.

B. Playing Rules

1. All rules not modified here shall be in accordance with current National Federation rules.
 - a. Any team member listed on the school's roster may participate on any of that school's relay teams providing the maximum participation rule is not violated.
 - b. Any competitor who exceeds the maximum participation rule forfeits further participation in any and all events in the 2022 State Indoor Track Meet.
 - c. Should the competitor exceed the maximum participation rule while competing on a relay team, the *entire relay team* is excluded from that event at the 2022 State Indoor Meet.
 - d. Teams checking in at the bullpen for respective relay races must present relay cards with all participant names listed and present.
 - e. There will be no fly zone in any relay events.
2. Shoes with spikes are prohibited in all facilities in Maryland except the Prince George's Sportsplex. Any infraction will result in the disqualification of the competitor from the meet.
3. Only shoes with 1/4" pyramid spikes or less are permitted in the Prince George's Sportsplex. *Shoes with hard plastic spike plates may not be worn without spikes inserted **at any facility**.*
4. The spraying of shoe soles is prohibited. Any infraction will result in the disqualification of the competitor from the meet.
5. No tape will be permitted on the floor for any running event.
6. Videotape or other electronic recording of appeals will not be accepted.

C. General Policies

All electronic listening devices are barred from the area of competition.

III. REGION MEET

A. Meet Organization

1. Any team that makes formal application on **athletic.net** by the established deadline will be entered into the meet.
2. An application received after the Region Meet Entry Deadline (7 days prior to the start of the meet) must be accompanied by a check, payable to the MPSSAA, in the amount of \$100.00, or the entry is invalid. The burden of proof is on the school. In no case will a team be entered into a region meet if the Region Meet Director does not have the completed application and \$100 late fee (if applicable) in hand by the Penalty Deadline (five calendar days prior to the start of the meet).

3. Each school may submit three (3) entries per individual event and one (1) team in each relay event.
 - a. The top 24 verifiable entries per individual event will have a chance to compete in their respective region meet. Every school in the region may enter a team and compete in the relay events.
 - b. A verifiable entry is a regular season high school event during the current indoor track season that has official results for all competitors and teams competing in that event and is posted on Mile-Split.
 - c. The only conversions that will be accepted are hand-timed meets to FAT. Actual results for the 1-mile and 2-mile runs may be used, but not converted, for entries into the 1600m and 3200m runs.
 - d. It is the school's responsibility to provide verified marks and any marks that can not be verified through official regular season results, will result in the entry being reseeded to their next best verifiable mark.
 - e. In the event of a tie for the 24th best mark, all tied competitors will have a chance to compete in the regional meet.
4. An athlete may participate in a maximum of four events.
5. You may make revisions until the *Penalty Deadline Date* established for your meet.
6. A scratch in an individual event is due *FOUR calendar days* before the start of the meet to the region director (Scratch Deadline Date).
7. After the Scratch Deadline Date, the meet is seeded and no changes to accepted entries can be made. In addition, after that deadline, all entries in individual events count as an event that the athlete has participated in.
8. The following online method for entry must be used for regional entries. Please follow these directions for submitting entries.
 - a. Go to <www.athletic.net>, the site hosting the online entry process.
 - b. Log in to your coach account.
 - c. Your region meet should appear on your team's season calendar. Select the meet and then click the "Register Athletes" button.
 - d. You may choose to complete entries "by event" or "by athlete"
 - e. Enter/confirm your contact info and select the gender(s) in which you wish to complete entries for and then click Enter Team.
 - f. You are now able to enter athletes in events for the region meet.
 - g. After completing entries, print a confirmation copy of your entries by clicking on the print confirmation link at the top of your entry summary. The coach must bring a copy of this entry confirmation to the region meet.
 - h. detailed entry instructions can be found at , <<https://support.athletic.net/article/z11f8f1jja-submitting-entries-for-a-meet>>.
 - i. additional help topics can be found at , <https://support.athletic.net/category/ipfmxavxq2-team-management>>.

9. The region meet director and the meet administrator are the only other individuals who will have access to team information (in order to seed the meet on basis of entries received).
10. The Meet Director or Meet Administrator has the right to challenge any entry that does not have a verifiable performance throughout the current Indoor Track season. The Meet Director or Meet Administrator will notify the coach of the concern and may adjust entry to the best verifiable performance for the current season. If this changes the top 24, the next verifiable mark will be entered.
11. Eligible individuals, as found on the school's athletic.net roster, may participate in a region meet provided they have a minimum of three weeks of supervised training and have participated in at least two MPSSAA-sanctioned meets.
12. Meets run outdoors or in school hallways will not be counted as sanctioned meets.
13. Meets shall be organized and structured in a uniform way—entry on the basis of best performance, seeding, placement in lanes, etc.
14. Starting blocks WILL BE PERMITTED in the 55m and 55m high hurdle trials.
15. Region meets will be held at the Baltimore 5th Regiment Armory (219 West Hoffman Street, Baltimore, MD 21201), Prince George's Sports and Learning Complex (8003 Sheriff Road, Landover, MD 20785) and the Hagerstown Community College (11400 Robinwood Drive, Hagerstown, Maryland, 21742).
16. **For meets at the Baltimore Armory the following organizational procedures shall be followed:**
 - a. Teams are not permitted in the Armory before 3 PM. Athletes are restricted to the main floor only. The balconies and basement are off-limits at all times.
 - b. All running events will begin at 4:00 PM.
 - c. Where space is limited, the high jump and shot put events will be suspended during the dash and hurdle events.
 - d. Dressing facilities are not available. Athletes should come dressed to participate.
 - e. Tentative recommended number of participants per section in distance events: 800 (9); 1600 (12); 3200 (18), 4x800 Relay (9). *Games Committee has authority to change these numbers.*
 - f. **The lane order for seeding the 500m and 4x400mR shall be 3-2-4-1.**
 - g. **The lane order for seeding the 300m and 4x200mR shall be 3-2-4.**
 - h. There will be no concessions. Vending machines are available.
 - i. Meet directors shall meet with all teams and coaches prior to the start of competition to emphasize the importance of following the policies and restrictions of the National Guard administration as well as those of meet management.
 - j. No one should remove equipment or materials or deface property in the meet facility.
 - k. Coaches shall see their team areas are clean prior to departure from the meet site.
 - l. The only markings on the Armory floor shall be with tape approved by meet management.
 - m. No spikes are permitted.

- n. All pole vault competitors will weigh in immediately on entering the Armory (3-3:45 PM). Boys will be weighed in first, followed by girls. Boys competition will begin at 3:45 PM.
- o. ALL ADULTS entering the Armory must present government-issued identification.
- p. No athletes are permitted outside during meets at the Fifth Regiment Armory.

17. For meets at the PG Sportsplex, the following organizational procedures shall be followed:

- a. Teams are not permitted in the Sportsplex before 3 PM (except 2A & 1A East Region meets).
- b. Only shoes with 1/4" pyramid spikes or less are permitted in the Prince George's Sportsplex. *Shoes with hard plastic spike plates may not be worn without spikes inserted.*
- c. All pole vault competitors will weigh in immediately on entering the Sportsplex (3-3:45 PM). Boys will be weighed in first, followed by girls. Boys competition will begin at 3:45 PM (except 2A & 1A East Region meets).
- d. Blocks are permitted to be used in the 55m dash and 55m HH.

18. For meets at Hagerstown Community College, the following organizational procedures shall be followed:

- a. **No spikes permitted. Shoes with hard plastic spike plates are also not permitted.**
- b. Blocks will only be allowed for the 55m dash and 55m HH events.

B. Playing Rules

1. The team or individual contestants must be accompanied to the meet by the coach or a designated representative.
2. The first four scorers in each event will automatically advance to the state meet. If a tie occurs for fourth place, all tied competitors shall advance. Coaches should notify the region meet director at the region meet, but no later than the seeding of the State Meets on February 18th, of their intent to scratch any individual qualifier.
3. In addition to the automatic qualifiers, individual competitors or relay teams who, in their region meet finals, meet the qualifying standard on the previous page may also compete. Separate Advancement Standards shall be used for region finals held at the Prince George's Sportsplex or Hagerstown Community College and the Baltimore 5th Regiment Armory.

4. Order of track events - girls will precede boys in all final running events, except where noted:

- | | | | |
|----------------------|-----------------|------------------|-----------------------|
| 1) 55m HH Semis B, G | 5) 1600m | 9) 55m Final | 13) BREAK FOR CLEANUP |
| 2) 55m Semis B, G | 6) 500m | 10) 3200m (B) | 14) 4x400m Relay |
| 3) 4x800m Relay | 7) 55m HH Final | 11) 4x200m Relay | |
| 4) 300m | 8) 3200m (G) | 12) 800m | |

- a. Only two rounds of 55m or 55m HH will be run. Heat winners plus next fastest times will advance to finals. In addition, any athlete that achieves the state automatic qualifying mark in the preliminary heats, will advance to the region meet final heat(s).
- b. If the venue has less than eight lanes the top-8 will compete in a two heat final in the 55m and 55m HH. If a two heat final in the 55m and 55m HH must be run, one section shall contain the maximum number of athletes that the track permits while the other section must contain a minimum of two athletes. Heat winners will be seeded first and the remaining athletes will be seeded on time.

5. The Meet Director will set the opening minimum height for the pole vault and high jump events for the regional meet.

C. General Policies

1. Individuals 7 years of age and older will be charged an admission of \$6.
2. A plaque will be awarded to the first place team. The meet will be scored for the top-eight in each event and ribbons will be awarded to the top-eight finishers in each event.
3. The track and the infield are restricted areas and open only to meet officials and competitors in uniform.
 - a. Penalty for coaches in violation: disqualification of their athlete(s) from the contested event.
 - b. Violators will be asked to leave the facility.

IV. STATE MEET

A. Meet Organization

1. **Region meet directors shall submit a back-up copy of the completed Hy-Tek meet file electronically to Gerard Filosa (gerardfilosa06@gmail.com) immediately following the conclusion of their meet. Region Meet Directors shall also bring a hard copy of their meet results with them to the finish line area at their respective State Meet.**
2. Region meet champions will be placed as the top seeds in each event contested in sections. *Class 3A and 4A remaining qualifiers will be based on performance, regardless of region. Class 1A and 2A will seed by the top two places, then time.*
3. The following lane order will be used for seeding:
 - a. 55m and 55m hurdles (4-5-3-6-2-7-1-8). (The lane assignment in the final shall be determined by the following finish order in the semifinals: place, then time.)
 - b. 500m, 4x400mR (4-5-3-6-2-1)
 - c. 300m, 4x200mR (3-2-4)
 - c. 800m, 1600m, 3200m, 4x800mR (1-2-3-4-5-6)
 - d. 800m, 1600m, 3200m, and 4x800mR will be run on a 1-turn stagger, starting in the alleys (outside alley to top seeds).
4. The 2023 Championships will be held February 21 and 22 at the Prince George's Sports & Learning Complex, Landover. Class 1A and Class 2A meets will be held on February 21 beginning at 4 PM. The Class 3A and Class 4A meets will be held February 22, beginning at 4 PM.
 - a. Teams may not enter the complex until 2:30 PM on Tuesday and Wednesday.
 - b. All spectators must park in the large lot on Brightseat Road just beyond the light at Sheriff Road.
 - c. Team buses should turn right at light onto Sheriff Road. Turn left at light at Harvey Drive into the Sportsplex entrance.

B. Playing Rules

1. Order of running events

- | | | |
|------------------------------|------------------------|-------------------------------|
| 1) 55m HH Semifinal - B, G | 5) 1600m Final - G, B | 9) 55m Final - G, B |
| 2) 55m Semifinal - B, G | 6) 500m Final - G, B | 10) 3200m Final - B |
| 3) 4x800m Relay Final - G, B | 7) 55m HH Final - G, B | 11) 4x200m Relay Final - G, B |
| 4) 300m Final - G, B | 8) 3200m Final - G | 12) 800m Final - G, B |
| | | 13) 4x400m Relay Final - G, B |

2. Order of field events

DAY 1 — CLASS 1A AND CLASS 2A

SHOT PUT

1A Girls
2A Girls
1A Boys
2A Boys

HIGH JUMP

2A Girls
1A Girls
2A Boys
1A Boys

POLE VAULT (Warmup 3 PM)

1A Boys
2A Boys
1A Girls
2A Girls

DAY 2 — CLASS 3A AND CLASS 4A

SHOT PUT

3A Girls
4A Girls
3A Boys
4A Boys

HIGH JUMP

4A Girls
3A Girls
4A Boys
3A Boys

POLE VAULT (Warmup 3 PM)

3A Boys
4A Boys
3A Girls
4A Girls

- Pole vaulting will begin promptly at 4 PM on February 21/22.
- The MPSSAA will supply Batons at the State Meet for relay races.**
- Only shoes with 1/4" **pyramid** spikes or less are permitted in the Prince George's Sportsplex. *Shoes with hard plastic spike plates may not be worn without spikes inserted. **The Prince George's Sportsplex will check all spikes.***
- Opening heights in the field events will be determined by the Games Committee at the state seeding meeting, based on the entries received.
- Shots used in competition will be weighed in and remain until the completion of the event.
- A competitor who is not ready to perform when called by the official will be charged with a trial in the field events and could be disqualified in a running event.
- A competitor must notify the official when leaving one event after being called for competition in another event.
- Eight places will be scored in the State meet.

C. General Policies

- Individuals 7 years of age and older will be charged an admission of \$10. *No re-entry will be permitted.*
- Plaques will be awarded to the first and second place teams. Medals will be presented to the first three finishers in all events and ribbons to those placing fourth through eighth.
- The track and the infield are restricted areas and open only to meet officials and competitors in uniform.
 - Penalty for coaches in violation: disqualification of their athlete(s) from the contested event.
 - Violators will be asked to leave the facility.

ADVANCEMENT STANDARDS FOR PERFORMANCE IN THE 2023 REGION FINALS										
PG Sportsplex or Hagerstown Community College					GIRLS	Baltimore Fifth Regiment Armory/Other Venue				
	4A	3A	2A	1A			4A	3A	2A	1A
55m	7.46	7.46	7.62	7.85		55m	7.60	7.60	7.76	8.00
55HH	9.27	9.06	9.71	9.99		55HH	9.45	9.24	9.89	10.18
300m	41.91	42.29	43.27	43.80		300m	43.90	44.03	44.80	45.39
500m	1:20.55	1:21.52	1:23.04	1:25.54		500m	1:22.92	1:23.78	1:25.07	1:27.73
800m	2:25.91	2:28.74	2:30.51	2:35.36		800m	2:29.55	2:32.28	2:33.73	2:38.56
1600m	5:26.91	5:33.24	5:36.57	5:55.33		1600m	5:36.60	5:42.73	5:44.39	6:02.08
3200m	11:53.55	12:10.72	12:27.34	13:03.07		3200m	12:14.48	12:30.01	12:24.23	13:19.80
4x200	1:49.39	1:50.24	1:51.70	1:55.15		4x200	1:53.11	1:53.35	1:55.84	1:59.54
4x400	4:13.35	4:16.57	4:21.19	4:27.46		4x400	4:22.19	4:24.06	4:28.77	4:36.57
4x800	10:07.40	10:16.75	10:33.71	10:54.88		4x800	10:23.12	10:31.47	10:49.87	11:20.73
HJ	4-10	4-10	4-07	4-08		HJ	4-06	4-09	4-08	4-07
SP	33-00	32-06	31-00	29-10		SP	33-03	33-00	31-04	29-10
PV	7-06	7-05	7-08	7-00		PV	7-10	7-08	7-10	7-03
						BOYS				
	4A	3A	2A	1A			4A	3A	2A	1A
55m	6.73	6.76	6.79	6.98		55m	6.85	6.89	6.91	7.11
55HH	8.28	8.24	8.40	8.86		55HH	8.44	8.39	8.56	9.03
300m	36.91	36.77	37.34	38.02		300m	38.36	38.28	38.77	39.47
500m	1:08.72	1:09.38	1:10.68	1:11.68		500m	1:10.65	1:11.10	1:12.34	1:13.51
800m	2:03.69	2:05.32	2:06.83	2:10.14		800m	2:06.75	2:07.68	2:09.57	2:13.96
1600m	4:35.92	4:39.58	4:43.11	4:55.86		1600m	4:42.22	4:45.59	4:49.49	5:03.03
3200m	10:03.74	10:17.39	10:25.22	10:55.69		3200m	10:18.21	10:29.23	10:34.78	11:06.78
4x200	1:35.01	1:36.04	1:37.45	1:39.54		4x200	1:38.72	1:39.77	1:41.22	1:43.39
4x400	3:35.16	3:36.90	3:40.82	3:44.81		4x400	3:41.30	3:42.84	3:47.18	3:52.02
4x800	8:28.96	8:36.71	8:48.94	9:07.58		4x800	8:38.91	8:47.23	8:59.89	9:20.14
HJ	5-10	5-10	5-09	5-06		HJ	5-10	5-10	5-09	5-06
SP	44-09	43-04	42-08	41-09		SP	45-07	43-05	42-02	41-05
PV	10-05	10-00	10-09	9-07		PV	10-05	9-10	10-09	9-11

PROJECTED MPSSAA INDOOR TRACK CHAMPIONSHIP DATES		
2024 - February 19/20	2025 - February 17/18	2026 - February 16/17

2023 REGION MEET INFORMATION

Region meet schedule and email addresses for regional directors can be found on the Indoor Track pages of mpssaa.org.

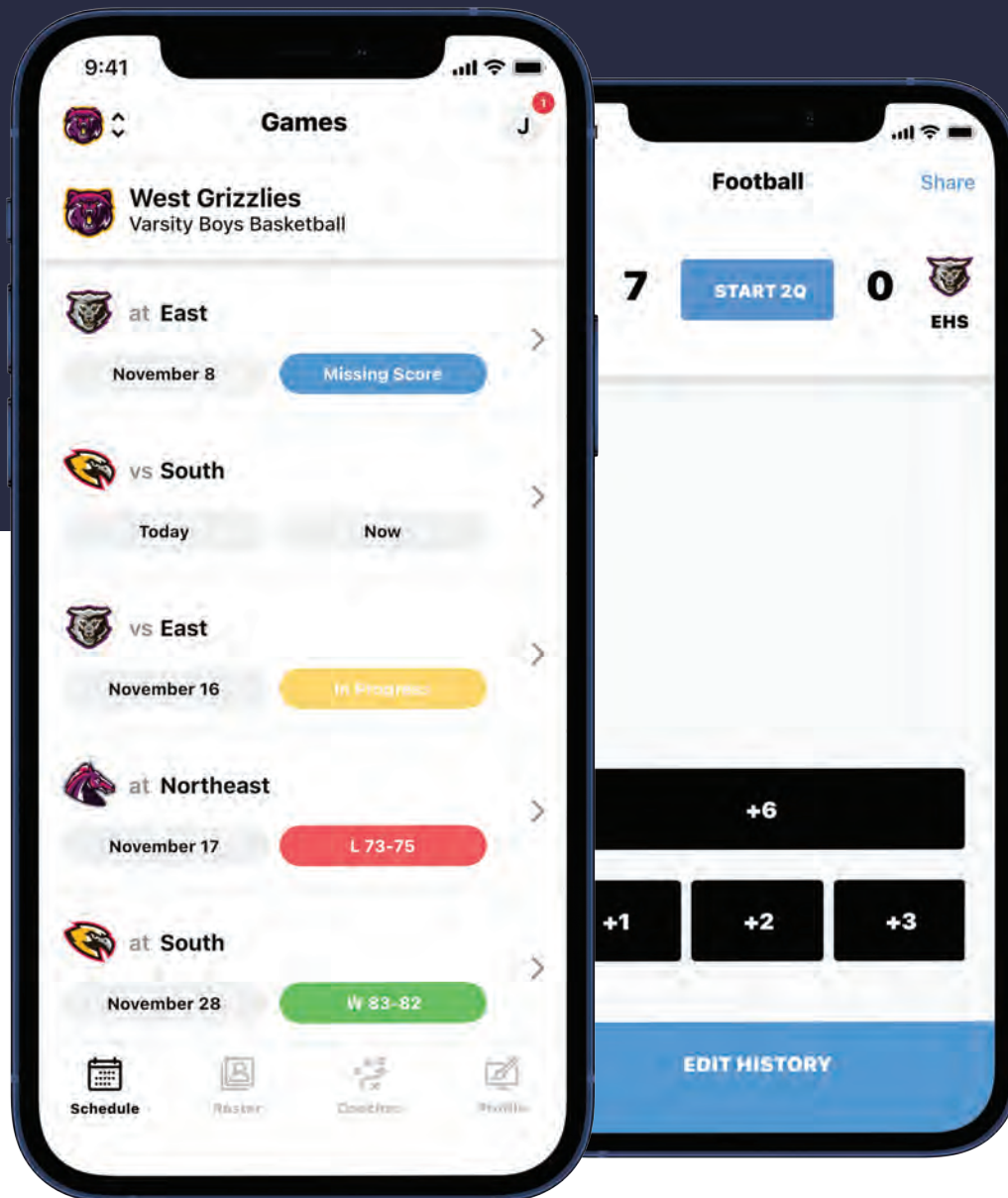
<p style="text-align: center;">1A West Hagerstown CC February 4 (2:30 p.m.)</p> <p>Entry DeadlineJanuary 28 Penalty DeadlineJanuary 30 Scratch Deadline.....February 1</p> <p>Coaches Meeting2:00 p.m.</p> <p>Meet DirectorBecky Ward SchoolBoonsboro</p>	<p style="text-align: center;">1A Central Baltimore Armory February 6 (4:00 p.m.)</p> <p>Entry DeadlineJanuary 30 Penalty DeadlineFebruary 1 Scratch Deadline.....February 3</p> <p>Coaches Meeting3:30 p.m.</p> <p>Meet Director.....Greg Hrinda School.....Pikesville</p>	<p style="text-align: center;">1A East Worcester Recreation Center February 8 (3:00 p.m.)</p> <p>Entry Deadline.....February 1 Penalty Deadline.....February 3 Scratch Deadline.....February 5</p> <p>Coaches Meeting2:30 p.m.</p> <p>Meet DirectorDave Dodson School.....Worcester County</p>
<p style="text-align: center;">2A West Hagerstown CC February 11 (2:30 p.m.)</p> <p>Entry Deadline.....February 4 Penalty DeadlineFebruary 6 Scratch Deadline.....February 8</p> <p>Coaches Meeting2:00 p.m.</p> <p>Meet DirectorChris Brewington SchoolOakland Mills</p>	<p style="text-align: center;">2A Central Baltimore Armory February 14 (4:00 p.m.)</p> <p>Entry Deadline.....February 7 Penalty DeadlineFebruary 9 Scratch DeadlineFebruary 11</p> <p>Coaches Meeting3:30 p.m.</p> <p>Meet DirectorBrad Duvall SchoolHereford</p>	<p style="text-align: center;">2A East PG Sports and Learning Complex February 6 (4:00 p.m.)</p> <p>Entry DeadlineJanuary 30 Penalty DeadlineFebruary 1 Scratch Deadline.....February 3</p> <p>Coaches Meeting3:30 p.m.</p> <p>Meet DirectorKevin Heider SchoolThomas Stone</p>
<p style="text-align: center;">3A West Baltimore Armory February 9 (4:00 p.m.)</p> <p>Entry Deadline.....February 2 Penalty DeadlineFebruary 4 Scratch Deadline.....February 6</p> <p>Coaches Meeting3:30 p.m.</p> <p>Meet DirectorRonnie Beard SchoolOakdale</p>	<p style="text-align: center;">3A Central Baltimore Armory February 8 (4:00 p.m.)</p> <p>Entry Deadline.....February 1 Penalty DeadlineFebruary 3 Scratch Deadline.....February 5</p> <p>Coaches Meeting3:30 p.m.</p> <p>Meet DirectorEric Benjamin School.....Dulaney</p>	<p style="text-align: center;">3A East Baltimore Armory February 7 (4:00 p.m.)</p> <p>Entry DeadlineJanuary 31 Penalty DeadlineFebruary 2 Scratch Deadline.....February 4</p> <p>Coaches Meeting3:30 p.m.</p> <p>Meet Director.....Philip Rogers SchoolReservoir</p>
<p style="text-align: center;">4A West PG Sports and Learning Complex February 9 (4:00 p.m.)</p> <p>Entry Deadline.....February 2 Penalty DeadlineFebruary 4 Scratch Deadline.....February 6</p> <p>Coaches Meeting3:30 p.m.</p> <p>Meet Director.....Eric DaSilva SchoolAlbert Einstein</p>	<p style="text-align: center;">4A Central PG Sports and Learning Complex February 8 (4:00 p.m.)</p> <p>Entry Deadline.....February 1 Penalty DeadlineFebruary 3 Scratch Deadline.....February 5</p> <p>Coaches Meeting3:30 p.m.</p> <p>Meet DirectorKenneth Washington SchoolNorthwestern-PG</p>	<p style="text-align: center;">4A East PG Sports and Learning Complex February 7 (4:00 p.m.)</p> <p>Entry DeadlineJanuary 31 Penalty DeadlineFebruary 2 Scratch Deadline.....February 4</p> <p>Coaches Meeting3:30 p.m.</p> <p>Meet DirectorBrianna Bostic SchoolBroadneck</p>

2022-23 ALIGNMENT FOR INDOOR TRACK

CLASS 4A-WEST			CLASS 4A-CENTRAL			CLASS 4A-EAST		
1.	Albert Einstein	Mtg	1.	North Point	Cha	1.	Annapolis	AA
2.	Bethesda-Chevy Chase	Mtg	2.	Urbana	Fre	2.	Arundel	AA
3.	Clarksburg	Mtg	3.	Bladensburg	PG	3.	Broadneck	AA
4.	Gaithersburg	Mtg	4.	Bowie	PG	4.	Glen Burnie	AA
5.	James Blake	Mtg	5.	C H Flowers	PG	5.	Meade	AA
6.	Montgomery Blair	Mtg	6.	Dr. Henry A Wise Jr	PG	6.	North County	AA
7.	Northwest	Mtg	7.	Duval	PG	7.	Old Mill	AA
8.	Northwood	Mtg	8.	Eleanor Roosevelt	PG	8.	Severna Park	AA
9.	Paint Branch	Mtg	9.	High Point	PG	9.	South River	AA
10.	Quince Orchard	Mtg	10.	Laurel	PG	10.	Catonsville	B Co
11.	Richard Montgomery	Mtg	11.	Northwestern (PG)	PG	11.	Dulaney	B Co
12.	Seneca Valley	Mtg	12.	Parkdale	PG	12.	Dundalk	B Co
13.	Sherwood	Mtg	13.	Suitland	PG	13.	Parkville	B Co
14.	Thomas S. Wootton	Mtg	14.	Leonardtown	StM	14.	Perry Hall	B Co
15.	Walt Whitman	Mtg				15.	Western	Balt
16.	Walter Johnson	Mtg						
17.	Wheaton	Mtg						
18.	Winston Churchill	Mtg						
CLASS 3A-WEST			CLASS 3A-CENTRAL			CLASS 3A-EAST		
1.	Manchester Valley	Car	1.	Chesapeake	AA	1.	Huntingtown	Cal
2.	Westminster	Car	2.	Crofton	AA	2.	Northern (Cal.)	Cal
3.	Frederick	Fre	3.	Northeast (AA)	AA	3.	St. Charles	Cha
4.	Linganore	Fre	4.	Franklin	B Co	4.	Atholton	How
5.	Oakdale	Fre	5.	Kenwood	B Co	5.	Centennial	How
6.	Thomas Johnson	Fre	6.	Milford Mill Academy	B Co	6.	Howard	How
7.	Tuscarora	Fre	7.	Patapsco	B Co	7.	Long Reach	How
8.	Col. Zadok Magruder	Mtg	8.	Towson	B Co	8.	Marriotts Ridge	How
9.	Damascus	Mtg	9.	Woodlawn	B Co	9.	Mt. Hebron	How
10.	John F. Kennedy	Mtg	10.	City	Balt	10.	Reservoir	How
11.	Rockville	Mtg	11.	Digital Harbor	Balt	11.	River Hill	How
12.	Springbrook	Mtg	12.	Mergenthaler	Balt	12.	Wilde Lake	How
13.	Watkins Mill	Mtg	13.	Poly	Balt	13.	Chopticon	StM
14.	Oxon Hill	PG	14.	Bel Air	Hfd	14.	Great Mills	StM
15.	North Hagerstown	Was	15.	C. Milton Wright	Hfd	15.	J. M. Bennett	Wic
16.	South Hagerstown	Was	16.	Edgewood	Hfd	16.	Stephen Decatur	Wor
CLASS 2A-WEST			CLASS 2A-CENTRAL			CLASS 2A-EAST		
1.	Southern (AA)	AA	1.	Carver A&T	B Co	1.	Calvert	Cal
2.	Century	Car	2.	Chesapeake	B Co	2.	Patuxent	Cal
3.	Liberty	Car	3.	Eastern Technical	B Co	3.	Elkton	Cec
4.	Winters Mill	Car	4.	Hereford	B Co	4.	North East (Cecil)	Cec
5.	Middletown	Fre	5.	Lansdowne	B Co	5.	Rising Sun	Cec
6.	Walkersville	Fre	6.	New Town	B Co	6.	La Plata	Cha
7.	Glenelg	How	7.	Overlea	B Co	7.	Lackey	Cha
8.	Hammond	How	8.	Owings Mills	B Co	8.	McDonough	Cha
9.	Oakland Mills	How	9.	Randallstown	B Co	9.	Thomas Stone	Cha
10.	Poolesville	Mtg	10.	Sparrows Point	B Co	10.	Westlake	Cha
11.	Fairmont Heights	PG	11.	Carver Vo-Tech	Balt	11.	North Caroline	Cin
12.	Frederick Douglass	PG	12.	Dunbar	Balt	12.	Kent Island	Qa
13.	Friendly	PG	13.	Patterson	Balt	13.	Queen Anne's	Qa
14.	Gwynn Park	PG	14.	Southwestern	Balt	14.	Easton	Tal
15.	Potomac	PG	15.	Harford Tech	Hfd	15.	Parkside	Wic
			16.	North Harford	Hfd	16.	Wicomico	Wic
			17.	Fallston	Hfd			
CLASS 1A-WEST			CLASS 1A-CENTRAL			CLASS 1A-EAST		
1.	Allegany	All	1.	Chesapeake Science Point	AA	1.	Cambridge-SD	Dor
2.	Fort Hill	All	2.	Bohemia Manor	Cec	2.	Kent County	K
3.	Mountain Ridge	All	3.	Perryville	Cec	3.	Central	PG
4.	Francis Scott Key	Car	4.	Loch Raven	B Co	4.	CMIT North	PG
5.	South Carroll	Car	5.	Pikesville	B Co	5.	CMIT South	PG
6.	Brunswick	Fre	6.	Western STES	B Co	6.	College Park Academy	PG
7.	Catoctin	Fre	7.	ACCE	Balt	7.	Croom Vocational	PG
8.	Northern (Gar.)	G	8.	Edmondson/Westside	Balt	8.	Crossland	PG
9.	Southern (Gar.)	G	9.	Forest Park	Balt	9.	Int. School at Langley Park	PG
10.	Boonsboro	Was	10.	Frederick Douglass-B	Balt	10.	Int. School at Largo	PG
11.	Clear Spring	Was	11.	Green Street Academy	Balt	11.	Largo	PG
12.	Hancock	Was	12.	Lake Clifton	Balt	12.	Surrattsville	PG
13.	Smithsburg	Was	13.	National Academy (NAF)	Balt	13.	Tall Oaks	PG
14.	Williamsport	Was	14.	New Era Academy	Balt	14.	Crisfield	Som
			15.	Reginald Lewis	Balt	15.	Washington	Som
			16.	Havre de Grace	Hfd	16.	Mardela	Wic
			17.	Joppatowne	Hfd	17.	Pocomoke	Wor
			18.	Seed School of Maryland	MD	18.	Snow Hill	Wor

SBLive GAMEDAY

LIVE SCORING & TEAM MANAGEMENT



Download on the
App Store



GET IT ON
Google Play



Download The App Today





MPSSAA SWIMMING AND DIVING BULLETIN

State Championships - February 24-25, 2023

University of Maryland - College Park

I. GENERAL INFORMATION

- A. The Maryland Public Secondary Schools Athletic Association (MPSSAA) is the official governing body for the Swimming Championships. Plans for the tournament will be formulated by the State Swimming Committee and approved by the Board of Control.
- B. Schools choosing to enter the tournament have the responsibility for reading and adhering to the rules and regulations stated in the front section of this publication, as well as those appearing within this Swimming and Diving Bulletin. Unless specifically stated, all rules and regulations stipulated in the NFHS Swimming and Diving Rule Book will be followed.
- C. Eligibility rules for all participants are defined in MPSSAA Bylaw .02 found in the current MPSSAA Handbook.
- D. General regulations for all state tournaments are contained in MPSSAA Bylaw .07, found in both the current Handbook, in the front section of this publication, and in the National Federation of State High School Swimming rules for administration of Championship/Large Meets. (Located on the Swimming and Diving page of NFHS.org)
- E. National Federation rulebooks are distributed by the MPSSAA office to every member school offering swimming. It is the responsibility of each coach to read and know the rules.
- F. Officials do a disservice to the sport and student athlete competitors when they set aside rules that apply to illegal uniforms or permit unsportsmanlike acts because they do not want to appear "too picky" or feel that "it is not a major meet." When those student athletes participate in a major competition, where the rules are enforced according to the code, they think that the rules are unfair or that they should have been warned, etc., because "no one called me on this all year." All too often, parents, coaches, and the media argue that the rules are unfair and that officials do not consider how devastating it is to a student athlete disqualified in a major meet because of an illegal uniform or meet conduct violation such as arriving late to the starting blocks. Certainly, this should not happen. However, such disqualifications are ultimately the responsibility of the student athlete and coach. Meet officials who tolerate illegal actions during the season must also assume some responsibility.
- G. Points of Emphasis
 - 1. Shaving - No on-site shaving before, during, or after a meet (NFHS Rule 3).
 - 2. Excessive celebration - For safety reasons, excessive celebration is prohibited on the pool deck. Example: Throwing a coach in the pool (NFHS Rule 3).
 - 3. A Designated False Start (DFS) counts as an event. A scratch removes the swimmer from the entire meet.
 - 4. Video and other image-producing devices will not be accepted as a basis for an appeal.

2022-2023 SWIMMING & DIVING TIME LINE

			REGION MEETS	STATE MEETS
Dec. 5.....First play date				
Feb. 13.....Deadline for entry into region meets	Feb. 16-18	Region Meets	Feb. 24-25	State Meets
Feb. 14.....Scratch/late entry deadline for regions	Feb. 21	Seeding of State Meets	Apr. 15.....	Reimbursement request due

- H. Each school entering a meet agrees to abide by decisions made by that meet's swim committee. The referee shall resolve protests at dual, triple dual, or tri meets. Protests at the City, County, Conference, or District championships based upon classification or State Meets shall normally be resolved by the Referee. However, if deemed serious enough by the Referee and/or Meet Manager, an Appeals Committee will be convened promptly, to consist of the Meet Manager, Administrative Referee, and Referee, at the site of the meet, to render a decision. The State Rules Interpreter will be a member of the Appeals Committee at the state meet.
- I. The State Swimming Committee has approved the use of Hy-Tek Team and Meet Manager during the regular season. This software will be used during the regional and state meets. All jurisdictions must use the Windows version of HY-Tek Team Manager software to submit entries to the Region managers.
- J. There is a four event limit per competitor with no more than two of which may be individual events as per National Federation Rules.

II. REGION AND STATE MEETS

A. Meet Organization

- 1. Seeding Order.....8 lane pool6 lane pool
From middle lane4-5-3-6-2-7-1-83-4-2-5-1-6
- 2. Specific information for order of swimming events is listed below. (NFHS Rule 5)
- 3. Meet Directors will be responsible for organizing the meets, securing officials, arranging for First Aid

ORDER OF SWIMMING & DIVING EVENTS

BOYS EVENTS	GIRLS EVENTS
1200-yard Medley Relay	2
3200-yard Freestyle	4
5200-yard Individual Medley	6
750-yard Freestyle	8
9Break/Diving TBD	10
11100-yard Butterfly	12
13100-yard Freestyle	14
15500-yard Freestyle	16
17200-yard Freestyle Relay	18
19100-yard Backstroke	20
21100-yard Breaststroke	22
23400-yard Freestyle Relay	24

services, scoring, and reporting to the Executive Director those who qualify for state competition. ALL MEETS shall be organized and structured in a uniform way for seeding, placement in lanes, etc.

- a. Hand timed (HT) races shall be recorded to one one-hundredth (1/100) of a second. Fully automatic timed races (AT) shall be recorded to one one-hundredth (1/100) of a second.
- b. All key, paid officials will be registered with the MPSSAA. It is preferred that these officials have no conflict of interest with any participants in the meet. All teams will be expected to provide the names of two adult timers for region meets and state meets who will stay for the duration of the meet if selected.
- 4. A coaches' meeting will be held prior to the start of their appropriate meet, unless otherwise noted.
 - a. A printed meet schedule shall be handed out at the coaches' meeting and followed as closely as possible. Any necessary schedule adjustments will be made at this time. Whether present or not, each coach is responsible for all changes made at the meeting.
 - b. Entry in a relay becomes official when the team declares its four swimmers at the coaches' meeting prior to the meet. The lead swimmer and three others (in no order) will be designated for each

relay. All swimmers, by stroke, will be designated for the medley relays. A form will be provided. Any changes to relays after the coaches' meeting must be put in writing listing the event, swimmer(s) added, and swimmer(s) replaced. It should be given to and approved by the Admin Referee (**Swimmers must be one of the eight already declared in the Team Manager entry file.**)

- c. There will also be the opportunity for deck scratches, before or immediately after the coaches' meeting, using the form provided. A scratch at any time, including missing (failing to swim in) a scheduled event, disqualifies that swimmer or the designated lead swimmer of the relay team from the rest of their scheduled meet events. Teams at the coaches' meeting may scratch relays without penalty prior to the conclusion of the meeting.
 - d. Declared False Starts (DFS) can be stated at the coaches' meeting to all in attendance, including the REFEREE. A DFS made during the meet must be given to the Referee, who will let the field know before the start of the appropriate event and heat. A DFS will count as an event for that swimmer.
5. There will be a break of at least 15 minutes, including at least 10 minutes warm-up in the water just before the 100-yard butterfly. If there is no warm-up/warm-down pool, there will be a five-minute break following the 500 free to allow relay swimmers to get wet.
 6. Region Meet Directors shall email final meet results to State Meet Entry Coordinator Michael Kokoski (mpssaaswimdive@gmail.com) immediately following the completion of their meet(s) for posting on MPSSAA.org and County Sports Zone.

B. Playing Rules

1. All rules not modified here shall be in accordance with the current National Federation rules.
2. Eligible individuals may participate in a region meet provided they have a minimum of three weeks of supervised training and have participated in at least two MPSSAA-sanctioned meets.
3. There is a 8-minute cut-off time for boys entries and 8-minute, 30-second cut-off for girls entries in the 500 freestyle events.
4. Competitors must compete in school approved team uniforms. Suits and caps must meet NFHS guidelines. Team caps must be identical. Failure to comply shall result in a warning for the first offense and an event disqualification for any subsequent offense.
5. Contestants are to report on the first call to the staging area.
6. Team points will be scored to 16th place according to NFHS Championship Meet Scoring Rules.

C. General Policies

1. Each school shall supply its own lap counters and operators for the 500 freestyle events **if requested by the Meet Director**. All teams must bring stop watches for their timers.
2. Only designated officials and participants shall be permitted on deck. Coaches and members of their teams shall remain in their designated areas, from which point the coach can dispatch contestants to the proper location for participation.
3. Electronic audio devices are barred from use at pools during meets, especially around the starting blocks. The rule applies to spectators as well as participants. Any other devices emitting excessive noise will also be silenced.
4. Photography is PROHIBITED from behind the starting blocks (this includes cell phones).

III. REGION MEETS

A. Meet Organization

1. Any swim team that makes formal application (submits Team Manager entry files) by the established deadline (6 PM on February 13th) will be entered in the meet. Files must be emailed to the appropriate region meet managers. The Hy-tek entry report with times must be signed by coach, athletic director and principal, and emailed or faxed to the meet director by 6 PM on February 13th.
2. Late entries, in the correct format, will be accepted up to 24 hours after the deadline, (Late entry deadline: 6 PM on February 14th). A late entry fee of \$100 must accompany the entries. NO entries will be accepted without this fee or in an incorrect format.
3. Team Manager files received after the late meet entry deadline (6 PM on February 14th) will not be accepted. The burden of proof is on the school.
4. The Region Meet Directors are responsible for contacting those schools whose Team Manager files are incomplete or were not received by the deadline.
5. Coaches are responsible for verifying their entries before the file is submitted.
6. Coaches are responsible for emailing or faxing to the Region Meet Director, a team administrative roster of coaches, manager names, and **two** adult timers. This form must be submitted with the Hy-tek entry by the entry deadline date (6 PM on February 13th).
7. This will be a timed finals meet.
8. Entry Guidelines

a. **A diving entry does not count towards the entry limits.**

- b. No more than two competitors from a given school shall be allowed to enter in any individual event with documented times from a regularly scheduled swim meet in 2022-2023 (i.e., based upon a minimum of two "watch times" averaged or electronic timing). Each team will also submit their one automatic relay entry with up to eight swimmers per relay event and the documented seed time. (See II. A. 4. c. for entry in relays.) "No time" entries will not be accepted.
- c. Competitors that are entered into, compete in, and qualify from their region meet are expected to participate in their State Championship Meet or be subject to "misconduct detrimental to the tournament" and its' penalties as found in the MPSSAA Handbook.

d. **Schools are reminded they must be in compliance of COMAR 13A.06.03.02G related to participation on high school and outside teams.**

9. The Meet Director or Meet Administrator has the right to challenge any entry that is not consistent with a verifiable performance throughout the current Swimming Season. The Meet Director or Meet Administrator will notify the coach of the concern.

10. Directions for Entry

- a. Go to the MPSSAA Swimming page and click on the link "MPSSAA Swimming Championships Entry Page."
- b. If Team Manager is not used during the regular season, download TM Lite and the Team Manager startup database for your region.
- c. Create a team roster file in this database. This file must include the following information:
 - * Swimmer's last name, first name, middle initial (**Do NOT include date of birth.**)
 - * Gender.
 - * Three-letter MPSSAA team code only; **No LSC Code (MPSSAA Handbook pages 48-49).**
 - * Current school year (Example: Fr/So/Jr/Sr).

- d. Create an entry file. Entry limitations (See II. B. 2.) will be enforced.
- e. Export the roster file (An example of the team roster file name being exported and emailed is: LAC - Roster 001.) and the entry file (An example of the meet entry file being exported and e-mailed is: LAC-Entries 001.) from Team Manager.
- f. Print out a meet entry report from Hy-Tek, which includes proof of times. This report shall be signed by the school's Principal, Athletic Director and Swim Coach, and sent to the meet manager. A back up copy brought to the meet is strongly encouraged.
- g. Export a meet attendance report from Hy-Tek. This report is found under Reports > Meet Reports > Number of Meets Attended. Set the date filter for 12/5/2022.
- h. E-mail these four files (team roster file (zip), entry file (zip), meet entry report (pdf), meet attendance report (pdf)) to the Region Meet Manager/Hy-Tek Operator in your region.
**More specific instructions are available on the Entry Page.
- i. A return e-mail will be sent from the Region Meet Manager to confirm receipt of the files (This email does not confirm the validity of the entries, only the receipt of the files.).

11. Diving

- a. State and Region competition will consist of 11 dives per National Federation Rule 9.
- b. Diving shall be administered by a diving referee. There will be five, seven, or nine dive judges. An announcer shall announce the dives, competitors, describe the dives, and the awards given by each judge (NFHS Rule 9).
- c. Official entry card/score sheet with divers' first and last name, and school will be sent to the appropriate Meet Managers through the jurisdictional representative at the same time the swim entries are submitted.
- d. Divers will be limited to two boys and two girls per school.
- e. The top four scores in each region will advance to the State Finals.
- f. If a region does not fill the top four spots or state qualifier must withdraw, the next highest non-qualifier (from any region) shall be invited to the State Meet in order to guarantee a full complement of finalists.

12. All entries are Final at 6 p.m., February 14, 2023. NO events will be reseeded. If a swimmer needs to be scratched from the meet (complete removal from the meet) they may be replaced, in individual events only, by another swimmer on the previously submitted electronic roster who has not exhausted their compliment of events. Scratches must be completed by the end of the coaches meeting.

13. There will be a meeting prior to the region meet for Region Meet Directors/Hy-Tek Operators who are unfamiliar with or who have not worked with the computer software.

14. Each District Representative/Meet Director shall email their region Meet Manager backup files to State Meet Entry Coordinator Michael Kokoski (mpssaaswimdive@gmail.com) immediately following the completion of their meet(s) for the seeding of the State Meets.

B. General Policies

1. Awards: Plaques will be given to the winning boys and girls team in each classification. Ribbons will be awarded to the top eight finishers in each event.

2. Individuals 7 years of age and older will be charged an admission of \$6.

IV. STATE MEETS

A. Meet Organization

1. The State meet will be seeded from region results, based on time.
2. **Swimming Championships:**
 - a. In addition to the top three individuals and top three relay teams advancing from their region to the state meet, the individual competitors or relay teams who, in their region meet final, are among the top 12 statewide times will qualify for the state meet. (Excluding automatic qualifiers). In the event a tie for 24th, both individuals will be included.
 - b. If a tie exists for third place in a region, both individuals or relay teams will qualify for states and an at-large position will be lost in that event.
 - c. For individual events, the next two **fastest** non-qualifiers (alternates) shall be invited to the state meet in order to guarantee a full complement of finalists. If both alternates have the same time, then their position as first or second alternate will be assigned randomly. An alternate may elect to not swim if doing so would create a situation in which they would exceed the allowable number of swims. Heats will not be reseeded.
3. **Diving Championships:** The top four male and female individual divers advancing from their region will compete at the state meet. If needed the next highest nonqualifier will advance in order to guarantee a full complement of finalists. **Divers will be seeded (regardless of region) based on regional scores.**
4. The 2023 Championships will be held February 24-25 at the University of Maryland, College Park Eppley Recreation Center. Information on mpssaa.org.
 - a. Competition for diving will take place Friday, February 24th beginning at 5:00 PM.
 - b. Competition for the 4A/3A meet will take place Saturday, February 25th at 9:30 AM.
 - c. Competition for the 3A/2A/1A meet will take place Saturday, February 25th at 4:00 PM.

B. General Policies

1. Awards: Plaques will be given to the top boys and girls team in each classification. Medals will be awarded to the top three finishers and ribbons will be awarded to the fourth through eighth place finishers in each individual and relay event.
2. Individuals 7 years of age and older will be charged an admission of \$10.

PROJECTED MPSSAA SWIMMING & DIVING CHAMPIONSHIP DATES

2024 - February 23/24

2025 - February 21/22

2026 - February 20/21

REGION DIVING MEET SCHEDULE (Girls Dive First in 2023)

4A-3A West
Kennedy Shriver
Aquatics Center
February 16 (3:00 p.m.)

4A-3A North (inc. Frederick Co.)
Kennedy Shriver
Aquatics Center
February 17 (3:00 p.m.)

3A-2A-1A West
Kennedy Shriver
Aquatics Center
February 17 (3:00 p.m.)

Entry DeadlineFeb. 14
Meet Dir.Michael Good
Phone301-471-2571

Entry DeadlineFeb. 14
Meet Dir.Michael Good
Phone301-471-2571

Entry DeadlineFeb. 14
Meet Dir.Michael Good
Phone301-471-2571

Diving warm-up times shall begin one hour prior to the start of each region meet.

REGION SWIMMING MEET SCHEDULE

4A-3A West
Martin Luther King
Swim Center
February 18 (8:00 a.m.)
7:00 a.m. Warm Up

4A-3A North
St. Mary's College
February 18 (3:00 p.m.)
1:45 p.m. Warm Up

4A-3A South
Fairland Aquatic Center
February 18 (9:00 a.m.)
8:00 a.m. Warm Up

4A-3A East
Arundel Swim Center
February 18 (9:00 a.m.)
7:30 a.m. Warm Up

Entry DeadlineFeb. 14
Meet Dir.Jason Blanken
Phone240-286-4699

Entry DeadlineFeb. 14
Meet Dir. Penelope Michaels
Phone240-340-2689

Entry DeadlineFeb. 14
Meet Dir.John Venit
Phone301-725-7711

Entry DeadlineFeb. 14
Meet Dir.John Adey
Phone443-995-5072

3A-2A-1A West
Fairland Aquatic Center
February 18 (3:00 p.m.)
2:00 p.m. Warm Up

3A-2A-1A North
Magnolia Middle School
February 18 (10:00 a.m.)
8:30 a.m. Warm Up

3A-2A-1A South
St. Mary's College
February 18 (9:00 a.m.)
7:45 p.m. Warm Up

3A-2A-1A East
Arundel Swim Center
February 18 (3:00 p.m.)
1:30 p.m. Warm Up

Entry DeadlineFeb. 14
Meet Dir.John Venit
Phone301-725-7711

Entry DeadlineFeb. 14
Meet Dir.Chris Bley
Phone301-752-1538

Entry DeadlineFeb. 14
Meet Dir. Penelope Michaels
Phone240-340-2689

Entry DeadlineFeb. 14
Meet Dir.John Adey
Phone443-995-5072

STATE MEET SCHEDULE

Diving Championship (All classes)

University of Maryland -
Eppley Recreation Center
February 24 (5:00 p.m.)

Meet DirectorMichael Good
Phone301-471-2571

4A-3A Swimming Championship

University of Maryland -
Eppley Recreation Center
February 25 (9:30 a.m.)

Meet DirectorChris Bley
Phone301-752-1538

3A-2A-1A Swimming Championship

University of Maryland -
Eppley Recreation Center
February 25 (4:00 p.m.)

Meet DirectorChris Bley
Phone301-752-1538

Email addresses for all site directors can be found on the Swimming page of mpssaa.org.

2022-23 ALIGNMENT FOR SWIMMING & DIVING

CLASS 4A-3A-WEST			CLASS 4A-3A-NORTH			CLASS 4A-3A-SOUTH			CLASS 4A-3A-EAST		
1.	Bethesda-Chevy Chase	Mtg	1.	Northern (Cal.)	Cal	1.	Frederick	Fre	1.	Annapolis	AA
2.	Clarksburg	Mtg	2.	North Point	Cha	2.	Thomas Johnson	Fre	2.	Arundel	AA
3.	Col. Zadok Magruder	Mtg	3.	Albert Einstein	Mtg	3.	Tuscarora	Fre	3.	Broadneck	AA
4.	Gaithersburg	Mtg	4.	James Blake	Mtg	4.	Urbana	Fre	4.	Crofton	AA
5.	Northwest	Mtg	5.	John F. Kennedy	Mtg	5.	Bladensburg	PG	5.	Glen Burnie	AA
6.	Quince Orchard	Mtg	6.	Northwood	Mtg	6.	Bowie	PG	6.	Meade	AA
7.	Richard Montgomery	Mtg	7.	Montgomery Blair	Mtg	7.	C H Flowers	PG	7.	North County	AA
8.	Seneca Valley	Mtg	8.	Paint Branch	Mtg	8.	Dr. Henry A Wise Jr	PG	8.	Old Mill	AA
9.	Thomas S. Wootton	Mtg	9.	Sherwood	Mtg	9.	Duval	PG	9.	Severna Park	AA
10.	Walt Whitman	Mtg	10.	Springbrook	Mtg	10.	Eleanor Roosevelt	PG	10.	South River	AA
11.	Walter Johnson	Mtg	11.	Wheaton	Mtg	11.	High Point	PG	11.	Digital Harbor	Balt
12.	Watkins Mill	Mtg	12.	Chopticon	StM	12.	Laurel	PG	12.	Mergenthaler	Balt
13.	Winston Churchill	Mtg	13.	Great Mills	StM	13.	Northwestern (PG)	PG	13.	Poly	Balt
			14.	Leonardtown	StM	14.	Parkdale	PG	14.	Western	Balt
						15.	Suitland	PG	15.	Aberdeen	Hfd
									16.	Bel Air	Hfd
CLASS 3A-2A-1A-WEST			CLASS 3A-2A-1A-NORTH			CLASS 3A-2A-1A-SOUTH			CLASS 3A-2A-1A-EAST		
1.	Brunswick	Fre	1.	Benjamin Franklin	Balt	1.	Calvert	Cal	1.	Chesapeake	AA
2.	Catoctin	Fre	2.	Carver Vo-Tech	Balt	2.	Huntingtown	Cal	2.	Northeast (AA)	AA
3.	Linganore	Fre	3.	City	Balt	3.	Patuxent	Cal	3.	Southern (AA)	AA
4.	Middletown	Fre	4.	Coppin Academy	Balt	4.	La Plata	Cha	4.	Edmondson/Westside	Balt
5.	Oakdale	Fre	5.	Dunbar	Balt	5.	Lackey	Cha	5.	Forest Park	Balt
6.	Walkersville	Fre	6.	Patterson	Balt	6.	McDonough	Cha	6.	Frederick Douglass-B	Balt
7.	Damascus	Mtg	7.	Bohemia Manor	Cec	7.	St. Charles	Cha	7.	Cambridge-SD	Dor
8.	Poolesville	Mtg	8.	Elkton	Cec	8.	Thomas Stone	Cha	8.	Kent County	K
9.	Rockville	Mtg	9.	Perryville	Cec	9.	Westlake	Cha	9.	Kent Island	Qa
10.	Central	PG	10.	C. Milton Wright	Hfd	10.	CMIT South	PG	10.	Queen Anne's	Qa
11.	Fairmont Heights	PG	11.	Edgewood	Hfd	11.	Crossland	PG	11.	Easton	Tal
12.	Largo	PG	12.	Fallston	Hfd	12.	Frederick Douglass	PG	12.	Pocomoke	Wor
13.	Oxon Hill	PG	13.	Harford Tech	Hfd	13.	Friendly	PG	13.	Stephen Decatur	Wor
14.	Surrattsville	PG	14.	Havre de Grace	Hfd	14.	Gwynn Park	PG			
			15.	Joppatowne	Hfd						
			16.	North Harford	Hfd						
			17.	Patterson Mill	Hfd						

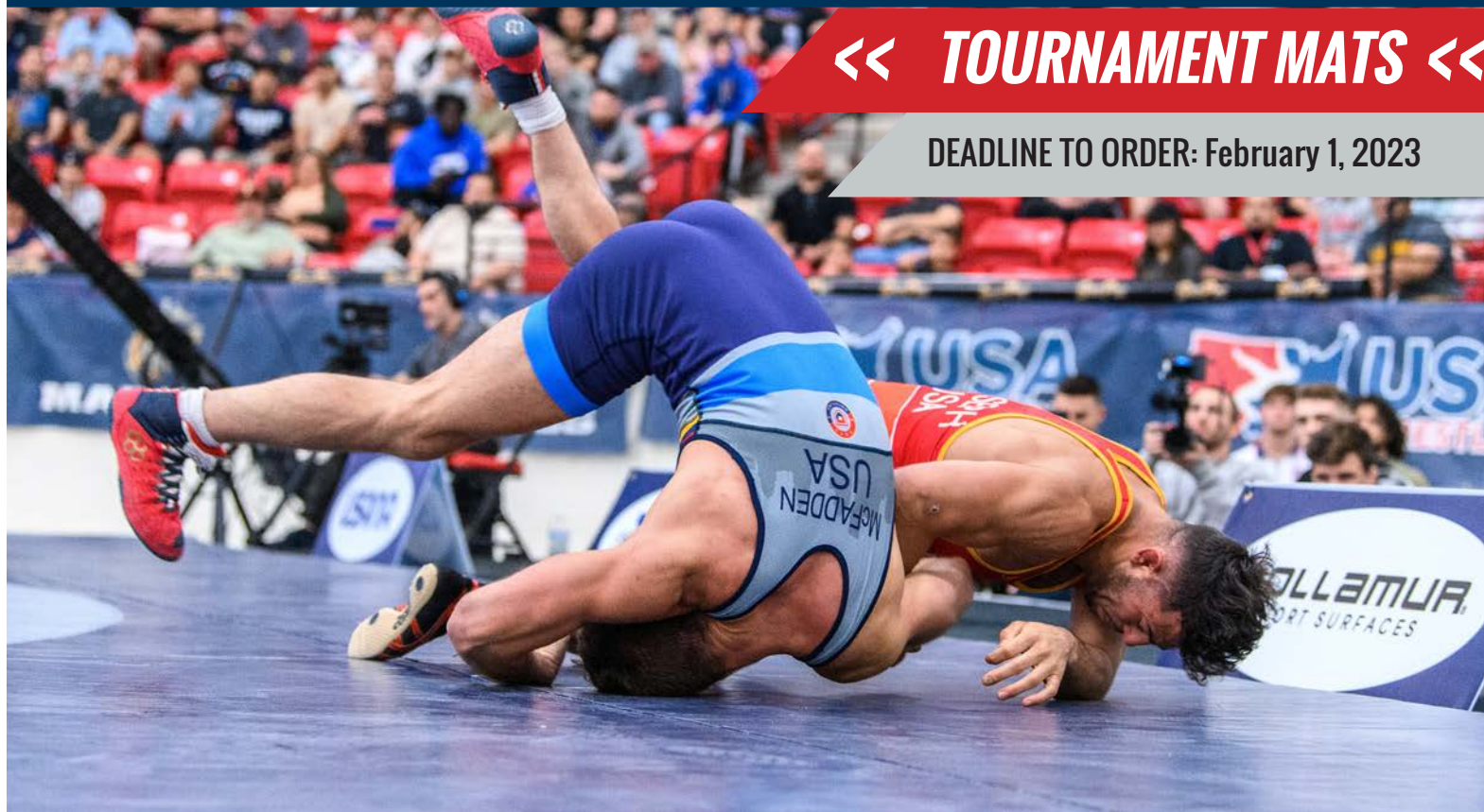
MPSSAA Swimming and Diving Committee Members are listed on the MPSSAA Website at www.mpssaa.org

DOLLAMUR[®]

SPORT SURFACES

«« **TOURNAMENT MATS** ««

DEADLINE TO ORDER: February 1, 2023



Maryland State Wrestling Championships

The Show Place Arena | Upper Marlboro, MD | March 2-4, 2023



NEW! DOLLAMUR COMPETITION MATS

Lightweight, High Performance
Fully Customizable, Competition Mats

42' x 40' x 1-5/8"

Quantities Limited! Order Today.

STARTING AT

\$7,699

Plus! Save on Shipping and
pick-up at the event.



For a FREE Mat Quote and Design Assistance, Call:

VINNY BARBER

833-311-4531

vbarber@dollamur.com

TROY REITER

833-311-4530

troy@dollamur.com

Official Mat of



FLOSPORTS



MPSSAA WRESTLING BULLETIN

Dual Meet State Championships - North Point HS, Feb. 11, 2023

State Tournament - The Show Place Arena, March 2-4, 2023

I. GENERAL INFORMATION

- A. The Maryland Public Secondary Schools Athletic Association is the official governing body for the State Wrestling tournaments. Plans for the tournaments were formulated by the State Wrestling Committee and approved by the Board of Control.
- B. Schools choosing to enter the tournaments have the responsibility for reading and adhering to the rules and regulations stated in the front section of this publication as well as those appearing within this Wrestling Bulletin. Unless specifically stated, all rules and regulations stipulated in the NFHS Wrestling Rule Book will be followed.
- C. Eligibility rules for all participants are defined in MPSSAA Bylaw .02, found in the current MPSSAA Handbook.
- D. General regulations for all state tournaments are contained in MPSSAA Bylaw .07, found in both the current Handbook and in the front section of this publication.
- E. All wrestlers must have their minimum weight class certified by a physician prior to their first competition. A hydration test and body fat analysis must be completed for all participants prior to certification, indicating a weight that corresponds to a 7% level of body fat for each wrestler (12% for females). Coaches should refer to the MPSSAA Weight Certification/Management Program regarding specific guidelines and regulations.
- F. A two-pound weight allowance will be added to each weight class on December 25.

II. REGION INFORMATION FOR DUAL MEET CHAMPIONSHIPS

A. Tournament Organization

1. **Each region will conduct a single elimination 16-line tournament with the champion advancing to state competition. Region Bouts begin at 5:30 p.m. with the second round bouts to follow.**
2. The weigh-in begins at 4:30 PM. A team may weigh-in a maximum of 20 wrestlers.
3. **Teams will be seeded based on their regular season winning percentage in dual meet competition. Schools will use their entire dual- and tri-meet schedule. Dual meet tournaments and meets conducted in quadrangular events do not apply. The minimum divisor of 11 will be used to calculate winning percentage. If more than 11 meets, winning percentage will be calculated by dividing the number of wins by the total number of matches.**

2022-2023 DUAL MEET TIME LINE

	REGION TOURNAMENT	STATE TOURNAMENT
Dec. 5First play date		
Feb. 4Last play date for Seeding	Feb. 7Region First RoundRegion Quarterfinal	Feb. 11Semifinals & Finals
Feb. 6Tournament Seeding	Feb. 9Semifinals & Finals	Apr. 15.....Reimbursement request due

2022-2023 WRESTLING TOURNAMENT TIME LINE

	REGION TOURNAMENT	STATE TOURNAMENT
Dec. 5First play date		
Feb. 15Female Region Entries	Feb. 24-25Finals	Mar. 2-4Finals
Feb. 18Last play date	Feb. 26Organization meeting for state tournament	Apr. 15.....Reimbursement request due

2. A plaque will be awarded to the championship team and the finalist team. Individual awards will be presented to members of the championship team and the finalist team.

IV. REGION AND STATE INDIVIDUAL TOURNAMENTS

A. Tournament Organization

1. The city/county/conference tournament is considered the beginning of the state tournament series and will be governed by state tournament policies.
2. A team may enter a maximum of one wrestler per weight class in the city/county/conference tournament.
3. A wrestler must be entered in the city/county/conference tournament in order to compete in the region tournament. A wrestler may not change weight classifications after the city/county/conference tournament.
4. The city/county/conference tournament is NOT a precursor for girls entered into the region tournament.
5. Teams may only participate in sanctioned tournaments.
6. All weight certification criteria or other entry criteria must be satisfied prior to the city/county/conference tournament.
- 7. The four regional champions will be seeded on the state tournament bracket.**
8. If two state champions from the previous season both win region championships, the State Wrestling Committee will adjust the state tournament seeding format so that the two state champions are in separate halves of the state championship bracket.

B. Playing Rules

1. Wrestlers entered in the region and state tournaments must be eligible in their local school systems at the time of seeding.
2. A contestant who is disqualified for flagrant misconduct at the city/county/conference or region tournament will be eliminated from further tournament competition.
3. Weight Rules
 - a. Each contestant must comply with weight control regulations found in the current MPSSAA Handbook and as described in the MPSSAA Weight Certification/Management program.
 - b. The region tournament director will verify the certified weights of all wrestlers entered.

V. REGION INDIVIDUAL TOURNAMENT

A. Tournament Organization

1. Each region will conduct an eight-line tournament, double elimination beginning with the quarterfinals. The top four wrestlers in each weight class will advance to the state tournament.
2. Region directors are responsible for scheduling a seeding meeting to occur within 48 hours of the conclusion of the last city/county/conference championship in their respective regions and to notify representatives of participating schools.
3. Two-day region tournaments will begin at 5 p.m. on Friday, weigh-ins will begin at 3:30 p.m.
4. One-day region tournaments will begin at 9:30 a.m. on Saturday, weigh-ins will begin at 8:00 a.m.
5. All mats/wrestling will be in one gymnasium. The layout of mats must conform to NFHS standards.

6. **Individual Wrestling Region Tournaments** (Tournament directors' contact info is on MPSSAA.org.)

Regions	Site	Date(s)	Start Time	Tournament Director
4A West & 3A West	Damascus	2/24-25	5:00 PM	Jon Ferguson, Damascus
4A North & 3A North	Aberdeen	2/25	9:30 AM	Gary Burkhardt, Parkville
4A South & 3A South	Arundel	2/25	9:30 AM	Odrist Felder, Charles H. Flowers
4A East & 3A East	South River	2/25	5:00 PM	John Klessinger, South River
2A West & 1A West	Manchester Valley	2/24-25	5:00 PM	Liz Padgett, Manchester Valley
2A North & 1A North	Milford Mill	2/25	9:30 AM	Mike Whisner, Sparrows Point
2A South & 1A South	Patuxent	2/25	9:30 AM	Mike Bartley, Patuxent
2A East & 1A East	Queen Anne's	2/25	9:30 AM	David Stricker, Queen Anne's

B. Seeding and Qualifying

1. The eight wrestlers in each weight class who have achieved the highest point totals will qualify and will be seeded 1 through 8, respectively.
2. The Point System Criteria shall be used to determine point totals (page 46). All schools must electronically complete the region seeding form found on MPSSAA.org and bring a copy to the seeding meeting. This will be the only form accepted for determining wrestler point totals.
3. Wrestlers who have not otherwise qualified according to the Point System Criteria will automatically qualify for the region tournament if they place in their city/county/conference tournament as described below (Placement Criteria). A wrestler who so qualifies will wrestle the No. 8 seed in order to advance to the quarterfinal round unless seeded to a higher position in the bracket (See "Point System Criteria For MPSSAA Region Tournament Seeding", Item 6.).

Placement Criteria

- 5 Teams or fewer 1st and 2nd Place Wrestlers Qualify
- 6-10 Teams 1st through 3rd Place Wrestlers Qualify
- 11-15 Teams 1st through 4th Place Wrestlers Qualify
- 16-20 Teams 1st through 5th Place Wrestlers Qualify
- 21-25 Teams 1st through 6th Place Wrestlers Qualify

4. The number of teams in a city, county, or conference tournament will be defined as the number of teams that participate in the tournament.
5. If qualifiers are withdrawn, substitutes/alternates may be inserted up to the conclusion of weigh-ins, with the bracket reseeded accordingly. A substitute/alternate may not be added unless the total number of wrestlers in a particular weight is less than eight, including wrestlers who qualify according to the placement criteria.

C. Girls Division

1. There will be a girls division at each of the eight region meets.
2. Each region will conduct an eight-line tournament, double elimination beginning with the quarterfinals.
3. Female wrestlers may choose to enter the girls division or their respective classification division for any gender. Entry registration into the Female division must be completed by 4 p.m. on Wednesday, February 15th.
4. The MPSSAA will use the 14 weight classes approved by NFHS for high school girls. While the NFHS rules go into full effect in 2024-2025, the MPSSAA will be utilizing the following approved weights for girls effective immediately:

100lb	120lb	140lb	190lb
105lb	125lb	145lb	235lb
110lb	130lb	155lb	
115lb	135lb	170lb	

5. The top two wrestlers in each weight class of the eight regions will advance to a single classification 16-line bracket at the state tournament.

D. General Policies

1. Certificates will be presented to the top four finishers for each weight class.
2. Persons age 7 years and older will be charged \$12 for admission.

VI. STATE INDIVIDUAL TOURNAMENT

A. Tournament Organization

1. The format of the tournament shall be double elimination.
 - a. The seeding meeting will take place at Mt. Hebron High School on Sunday, February 26th at 9:30 AM.
 - b. **To ensure a full complement of wrestlers in each bracket, alternates from the same region as a withdrawn qualifier may be inserted up to the conclusion of weigh-ins, with the bracket re-seeded accordingly. If an alternate from the same region is not available, the entry will be replaced by the alternate present with the next highest regional points, regardless of region.**

2. The 2023 tournament: March 2-4 at The Show Place Arena in Upper Marlboro, MD.

Directions: From Washington, DC: Use I-495 and take Exit 11A, for Route 4/Pennsylvania Avenue South/East. Follow Route 4 South for seven miles to the Upper Marlboro exit. At the stop sign at the end of the exit ramp, turn right and enter The Show Place Arena property.

From Baltimore: From I-695 take Exit 4 for I-97 South for Annapolis/Bay Bridge. Continue on I-97 to Exit 7, MD Route 3 South. At Bowie, Route 3 will become Route 301 South. Continue on Route 301 South to the exit for Route 4 North/West, towards Washington, D.C. From Route 4, take the first exit for Upper Marlboro. At the stop sign, turn left and enter the Arena property.

3. Team packets may be picked up by the Head Coach after 2 p.m. on Thursday, March 2 and 11 AM on Friday, March 3 in the main lobby. At that time, the head coach will receive identification bands and the student manager(s) will have their hand(s) stamped.
4. Although space will be available to shower and change clothes, lockers will not be available.
5. Required meetings
 - a. **Coaches of all competing wrestlers will meet at 4:00 p.m. on Thursday, March 2 and 1:45 p.m. Friday, March 3th.**
 - b. **Coaches of wrestlers remaining in the tournament after Thursday and Friday sessions will meet at 9:15 a.m. on Saturday, March 4th.**
6. Official school party (issuance of identification bands)
 - a. Identification bracelets will be issued to coaches who qualify as part of the official school party, limited to and identified as follows:
 - (1) When one wrestler represents a school: two wrestling coaches or one coach and one manager.
 - (2) When two or more wrestlers are representing a school: two wrestling coaches and one other non-contestant (i.e., student manager or assistant coach).
 - b. Identification bracelets must be worn for authorized entry into all areas that are off-limits to non-participants.
 - c. Wrestlers will be stamped at the weigh-in site. Wrestlers who are eliminated from competition do not have to pay admission for the second day.

7. MPSSAA will reimburse the cost of one insured, chartered carrier from each region for members of the official school parties in that region, to and from the tournament site.

B. General Policies

1. Medals will be presented to the top six finishers for each weight class.
2. Persons age 7 years and older will be charged admission. Tickets will be sold online at mpssaa.org or at the tournament site and are for general admission. Ticketing prices and information can be found at www.mpssaa.org.
3. To be admitted free, cheerleaders must be in uniform, be accompanied by a school sponsor, and enter through the Pass Gate. The wrestling coach will not be considered a sponsor.
4. No materials may be distributed unless approved by the MPSSAA State Tournament Wrestling Committee Director.
5. Videotaping will be permitted from the stands.
6. The following jurisdictions will NOT be reimbursed for lodging or meals: Baltimore City, and Anne Arundel, Baltimore, Calvert, Carroll, Charles, Frederick, Harford, Howard, Kent, Montgomery, Prince George's, Queen Anne's, St. Mary's, and Washington Counties.

MPSSAA Wrestling Committee Members are listed on the MPSSAA Website at www.mpssaa.org

Schedule of Events

Thursday, March 2nd (Girls Division Only)

Weigh-In3:00 p.m.
Coaches' Meeting4:00 p.m.

BOUTS

Girls Preliminaries4:30 - 6:30 p.m. (8 mats)
Girls Quarterfinals6:30 - 7:30 p.m. (8 mats)
Girls Consolation Prelims7:30 - 8:20 p.m. (8 mats)
Girls Consolation 1st Round8:20 - 9:10 p.m. (8 mats)

Friday, March 3rd (4A/3A & 2A/1A Divisions only)

Weigh-In12:30 p.m.
Coaches' Meeting1:45 p.m.

BOUTS

4A/3A Preliminaries2:30 - 6:15 p.m. (8 mats)
2A/1A Preliminaries2:30 - 6:15 p.m. (8 mats)
4A/3A Quarterfinals6:15 - 8:15 p.m. (8 mats)
2A/1A Quarterfinals6:15 - 8:15 p.m. (8 mats)
4A/3A Consolation Prelims8:15 - 10:00 p.m. (8 mats)
2A/1A Consolation Prelims8:15 - 10:00 p.m. (8 mats)

Saturday, March 4th (All Divisions)

Weigh-In8:00 a.m.
Coaches' Meeting9:15 a.m.

BOUTS

4A/3A Consolation 1st round9:30 - 11:00 a.m. (4 mats)
2A/1A Consolation 1st round9:30 - 11:00 a.m. (4 mats)

Championship Semifinals

4A/3A Semifinals11:00 a.m. - 1:15 p.m. (2 mats)
2A/1A Semifinals11:00 a.m. - 1:15 p.m. (2 mats)
Girls Semifinals11:00 a.m. - 1:15 p.m. (2 mats)
Girls Consolation Qtrfinals11:00 a.m. - 1:15 p.m. (2 mats)

4A/3A Consolation Quarterfinals1:15 - 2:15 p.m. (4 mats)
2A/1A Consolation Quarterfinals1:15 - 2:15 p.m. (4 mats)

4A/3A Consolation Semifinals2:15 - 4:00 p.m. (3 mats)
2A/1A Consolation Semifinals2:15 - 4:00 p.m. (3 mats)
Girls Consolation Semifinals2:15 - 4:00 p.m. (2 mats)

Consolation Finals

4:00 p.m. - 6:00 p.m. (6 mats)
3rd & 4th place
5th & 6th place

Championship Finals

6:30 p.m. - 9:00 p.m. (3 mats)

BOUT ORDER FOR CHAMPIONSHIP FINALS

Class 4A/3A285# to 106# Class 2A/1A106# to 285# Girls Division100# to 235#
ALL PLACE-WINNERS MUST BE IN SCHOOL-ISSUED UNIFORMS FOR PHOTOS AND AWARDS

PROJECTED MPSSAA DUAL MEET CHAMPIONSHIP DATES

2024 - February 10 2025 - February 15

PROJECTED MPSSAA WRESTLING CHAMPIONSHIP DATES

2024 - Feb. 29 - Mar. 2 2025 - Mar. 6-8

POINT SYSTEM CRITERIA FOR MPSSAA REGION INDIVIDUAL TOURNAMENT SEEDING

1. Points are not awarded for "Byes" whether it is no name on a bracketed tournament or no name in pool play.
2. Points are not awarded for scheduled contests not wrestled.
3. Individual placement points are not awarded in a dual meet tournament.
4. While each wrestler is allowed to enter a maximum of three tournaments prior to the state tournament series, only the points earned in two of these tournaments will apply towards regional seeding. The two tournaments in which the wrestler accumulates the greatest number of points shall apply for regional seeding.
5. Points are earned as follows:
 - a. Each dual meet or tri-meet win – 4 points
 - b. Each dual meet tournament win – 2 points
 - c. Each non-dual meet tournament win – 1 point
 - d. The maximum number of points that can be earned by a wrestler in a tournament is 20.

**** Note:** A wrestler may receive a maximum of one point per win in any tournament (this includes "hybrid" tournaments) that includes placement points for individual wrestlers. **

16-TEAM TOURNAMENT (14 or more teams participating)	12-TEAM TOURNAMENT (10-13 teams participating)	8-TEAM TOURNAMENT (7-9 teams participating)
1st - 16	1st - 12	1st - 9
2nd - 12	2nd - 9	2nd - 7
3rd - 9	3rd - 6	3rd - 5
4th - 6	4th - 4	4th - 3
5th - 3		
6th - 2		

} bouts must be wrestled

6-TEAM TOURNAMENT (5-6 teams participating)

- 1st - 7
- 2nd - 5
- 3rd - 3
- 4th - 0

DUAL MEET TOURNAMENT

- (4 or more teams)
2 points awarded for each win

d. POINTS FOR TOURNAMENT PLACERS THE PREVIOUS YEAR

STATE TOURNAMENT

- 1st - 16
- 2nd - 12
- 3rd - 9
- 4th - 6
- 5th - 4
- 6th - 2

REGION TOURNAMENT

- 1st - 9
- 2nd - 7
- 3rd - 5
- 4th - 3

(Placers from other States must have written verification from State or local school system.)

e. TIE-BREAKERS (Includes results of all matches):

1. Winner of most head-to-head matches this season.
2. Most wins in current season.
3. Overall win percentage in current season (3 or more matches).
4. Most falls in current season (a forfeit is not a fall).
5. Most technical falls and major decisions in current season.
6. Discussion.
7. Coin toss.

Note: If two wrestlers are tied for eighth and ninth place after criteria 1 through 7 is applied, both advance into a pigtail.

6. Once wrestlers have qualified for the tournament according to the Point System Criteria and/or the "Placement Criteria", the order of seeds may be adjusted. In order for a seeding adjustment to be brought to the floor for discussion, 50% of the voting coaches must agree to having the discussion. If the adjustment is to occur, two-thirds of the voting coaches must vote in favor of the adjustment.

2023 ALIGNMENT FOR DUAL MEET & INDIVIDUAL WRESTLING

CLASS 4A-WEST		CLASS 4A-NORTH		CLASS 4A-SOUTH		CLASS 4A-EAST	
1. Urbana	Fre	1. Catonsville	B Co	1. Bladensburg	PG	1. Annapolis	AA
2. Bethesda-Chevy Chase	Mtg	2. Dulaney	B Co	2. Bowie	PG	2. Broadneck	AA
3. Clarksburg	Mtg	3. Dundalk	B Co	3. C H Flowers	PG	3. Glen Burnie	AA
4. Gaithersburg	Mtg	4. Parkville	B Co	4. Dr. Henry A Wise Jr	PG	4. Meade	AA
5. Northwest	Mtg	5. Perry Hall	B Co	5. Duval	PG	5. North County	AA
6. Quince Orchard	Mtg	6. Western	Balt	6. Eleanor Roosevelt	PG	6. Old Mill	AA
7. Richard Montgomery	Mtg	7. Albert Einstein	Mtg	7. High Point	PG	7. Severna Park	AA
8. Seneca Valley	Mtg	8. James Blake	Mtg	8. Laurel	PG	8. South River	AA
9. Thomas S. Wootton	Mtg	9. Montgomery Blair	Mtg	9. Northwestern (PG)	PG	9. Leonardtown	StM
10. Walt Whitman	Mtg	10. Northwood	Mtg	10. Parkdale	PG		
11. Walter Johnson	Mtg	11. Paint Branch	Mtg	11. Suitland	PG		
12. Winston Churchill	Mtg	12. Sherwood	Mtg				
		13. Wheaton	Mtg				
CLASS 3A-WEST		CLASS 3A-NORTH		CLASS 3A-SOUTH		CLASS 3A-EAST	
1. Frederick	Fre	1. Franklin	B Co	1. Arundel	AA	1. Westminster	Car
2. Linganore	Fre	2. Kenwood	B Co	2. Chesapeake	AA	2. Atholton	How
3. Oakdale	Fre	3. Patapsco	B Co	3. Crofton	AA	3. Centennial	How
4. Thomas Johnson	Fre	4. Towson	B Co	4. Northern (Cal.)	Cal	4. Howard	How
5. Tuscarora	Fre	5. Woodlawn	B Co	5. North Point	Cha	5. Long Reach	How
6. Col. Zadok Magruder	Mtg	6. City	Balt	6. St. Charles	Cha	6. Marriotts Ridge	How
7. Damascus	Mtg	7. Digital Harbor	Balt	7. Oxon Hill	PG	7. Mt. Hebron	How
8. John F. Kennedy	Mtg	8. Mergenthaler	Balt	8. Chopticon	StM	8. Reservoir	How
9. Rockville	Mtg	9. Poly	Balt	9. Great Mills	StM	9. River Hill	How
10. Springbrook	Mtg	10. Aberdeen	Hfd	10. J. M. Bennett	Wic	10. Wilde Lake	How
11. Watkins Mill	Mtg	11. Bel Air	Hfd				
12. North Hagerstown	Was	12. Edgewood	Hfd				
13. South Hagerstown	Was						
CLASS 2A-WEST		CLASS 2A-NORTH		CLASS 2A-SOUTH		CLASS 2A-EAST	
1. Northeast (AA)	AA	1. Carver A&T	B Co	1. Calvert	Cal	1. Elkton	Cec
2. Southern (AA)	AA	2. Eastern Technical	B Co	2. Huntingtown	Cal	2. Rising Sun	Cec
3. Century	Car	3. Hereford	B Co	3. Patuxent	Cal	3. North Caroline	Cin
4. Manchester Valley	Car	4. Lansdowne	B Co	4. La Plata	Cha	4. C. Milton Wright	Hfd
5. Winters Mill	Car	5. Milford Mill Academy	B Co	5. Thomas Stone	Cha	5. North Harford	Hfd
6. Middletown	Fre	6. New Town	B Co	6. Westlake	Cha	6. Kent Island	Qa
7. Walkersville	Fre	7. Overlea	B Co	7. Fairmont Heights	PG	7. Queen Anne's	Qa
8. Glenelg	How	8. Owings Mills	B Co	8. Frederick Douglass	PG	8. Easton	Tal
9. Hammond	How	9. Randallstown	B Co	9. Friendly	PG	9. Parkside	Wic
10. Oakland Mills	How	10. Sparrows Point	B Co	10. Gwynn Park	PG	10. Wicomico	Wic
11. Poolesville	Mtg	11. Carver Vo-Tech	Balt	11. Potomac	PG	11. Stephen Decatur	Wor
		12. Patterson	Balt				
CLASS 1A-WEST		CLASS 1A-NORTH		CLASS 1A-SOUTH		CLASS 1A-EAST	
1. Fort Hill	All	1. ACCE	Balt	1. Chesapeake	B Co	1. Bohemia Manor	Cec
2. Mountain Ridge	All	2. Dunbar	Balt	2. Loch Raven	B Co	2. North East (Cecil)	Cec
3. Brunswick	Fre	3. Edmondson/Westside	Balt	3. Pikesville	B Co	3. Perryville	Cec
4. Catocin	Fre	4. Forest Park	Balt	4. Western STES	B Co	4. Colonel Richardson	Cin
5. Northern (Gar.)	G	5. Frederick Douglass-B	Balt	5. Lackey	Cha	5. Cambridge-SD	Dor
6. Southern (Gar.)	G	6. Lake Clifton	Balt	6. McDonough	Cha	6. North Dorchester	Dor
7. Boonsboro	Was	7. Reginald Lewis	Balt	7. Central	PG	7. Fallston	Hfd
8. Smithsburg	Was	8. Southwestern	Balt	8. Crossland	PG	8. Harford Tech	Hfd
9. Williamsport	Was	9. Francis Scott Key	Car	9. Int. School at Langley Park	PG	9. Havre de Grace	Hfd
		10. Liberty	Car	10. Largo	PG	10. Joppatowne	Hfd
		11. South Carroll	Car	11. Surrattsville	PG	11. Patterson Mill	Hfd
						12. Kent County	K
						13. St. Michaels	Tal
						14. Mardela	Wic
						15. Snow Hill	Wor

MPSSAA



**REFUEL
REBUILD
REPLENISH**

By American Dairy Association North East



WANT THE BEST SEAT IN THE HOUSE?

Become a high school official.



No other job gives you the chance to stay active, stay close to the sports you love and be a part of all the action! We need more officials in every high school sport. Don't wait! Sign up to suit up today!

Apply online at HighSchoolOfficials.com



#BecomeAnOfficial





PLAY.PERFORM.COMPETE. ***Together.***

High school sports produce an environment where students learn that we become better for our schools, our communities, and one another when we play, perform, and compete, together!

Now's the perfect time to share what high school sports mean to YOU. Post now using the hashtag **#PlayPerformCompeteTogether!**

