



MPSSAA

Handbook

www.mpssaa.org

2022-2023

Maryland Public Secondary Schools Athletic Association

About the MPSSAA

In its 77th year, The Maryland Public Secondary Schools Athletic Association operates in conjunction with the Maryland State Department of Education (MSDE) and the 24 local educational agencies to provide interscholastic participation opportunities to over 110,000 student-athletes at 200 public high schools.

Originated in 1946, the MPSSAA adopted its constitution on April 21, 1951 and has had 16 amendments. The MPSSAA derives its authority from the MSDE and the 24 local educational agencies. For administration purposes, the MPSSAA is divided into nine districts. These nine districts send representation to the Board of Control, Executive Council, and other standing committees.

Presiding over the association is an Executive Director and a staff appointed by MSDE. The staff, under the Executive Director's instruction, consists of an Assistant Director, Program Specialist, Coordinator of Officials and an Administrative Assistant. In addition, an MPSSAA President is nominated every two years from one of the local school systems to oversee the operation of the MPSSAA, Board of Control, and Executive Council.

The MPSSAA President, MPSSAA staff along with the Board of Control and Executive Council carries out the philosophy and purposes of the association, including making interscholastic athletics part of the entire educational program, continually developing programs to promote physical and mental safety as well as protection from exploitation and to promote fair competition and sportsmanship with all those involved.

The MPSSAA is a self-sufficient organization. The MPSSAA does not receive revenue or funds from state subsidies (taxpayer funds), school dues, tournament entry fees, or publication fees. The MPSSAA does generate revenue from gate receipts from selected regional and state tournament games, sponsorships, rule book sales to outside groups, media rights, officials' registration, and souvenir sales.

Generated revenue is deposited with MSDE and is administered in accordance with state policies and procedures. Funds are then distributed from the account and directed towards tournament expenses (facility rental, security, awards, and special equipment), publications, salaries, meeting space, school travel reimbursement, rules clinics, insurance, district subsidies, office expenses, and other miscellaneous expenses necessary for the daily and yearly operation of the association.

MPSSAA Membership Benefits

- No annual membership dues.
- No tournament entry fees.
- Reimbursement for some travel expenses to regional and state tournaments.
- Each school receives free rule book publications annually.
- School personnel (superintendents, athletic coordinators, principals, athletic directors and coaches) through district representation determine contest rules and regulations, organize state high school tournaments, hear appeals on rulings, develop classifications, and approve of financial decisions.
- In addition to the 24 state championships conducted annually, the MPSSAA hosts a Student-Athlete Leadership Conference and provides \$18,000 in college scholarships through its Minds in Motion Scholarship program.
- The MPSSAA provides complimentary coaches passes for free admission into region and state events.

Did You Know?

- The MPSSAA Bylaws are regulations of the State Board of Education. Interscholastic Athletics is governed by the policies listed in the Code of Maryland Regulations (COMAR) under the State Board of Education in section 13A.06.03.
- The MPSSAA is one of three states that operate in conjunction with the State Department of Education. The other two are Delaware and Texas.
- The MPSSAA has no full-time state members assigned to compliance or investigations. The responsibility of following MPSSAA bylaws and regulations resides with each member school. Each school system is responsible for investigating and reporting the decisions of the local school system to the MPSSAA Executive Director.
- Student-athletes tend to have better attendance records, lower dropout rates, higher grade-point averages, improved self-confidence, and are better prepared for college and a successful career after.



HANDBOOK

of the

Maryland

Public Secondary Schools

Athletic Association

200 West Baltimore Street Baltimore, MD 21201

410-767-0555

www.mpssaa.org

**Member of the
National Federation
of State High School Associations**

MARYLAND PUBLIC SECONDARY SCHOOLS ATHLETIC ASSOCIATION

2022-2023 OFFICERS

PRESIDENT

Michael Sye
Director of Athletics
Baltimore County Public Schools
9611 Pulaski Park Drive - Suite 307
Baltimore, MD 21220
Phone: (443) 809-2328
Fax: (410) 238-2035

PRESIDENT-ELECT

Dr. Jeffrey Sullivan
Director of Systemwide Athletics
Montgomery County Public Schools
850 Hungerford Drive, Room 174
Rockville, Md 20850
Phone: (240_ 740-5650
Fax: (301) 279-3104

PAST-PRESIDENT

Michael Duffy
Supervisor of Athletics
Carroll County Public Schools
125 North Court Street
Westminster, MD 21157
Phone: (410) 751-3059
Fax: (410) 751-3921

EXECUTIVE DIRECTOR

R. Andrew Warner
Maryland Public
Secondary Schools Athletic Association
200 West Baltimore Street
Baltimore, MD 21201
Phone: 410-767-0376
Fax: 410-333-3111

PROFESSIONAL STAFF

Jason Bursick
MPSSAA Assistant Director
Phone: 410-767-0415

Melissa Miranda Jones
MPSSAA Program Specialist
Phone: 410-767-0374

Ken Kazmarek
MPSSAA Coordinator - Officials
Phone: 410-767-0375

TBA

MPSSAA Office Manager
Phone: 410-767-0555
Fax: 410-333-3111

TABLE OF CONTENTS

MPSSAA OFFICERS AND STAFF	2
INTERSCHOLASTIC ATHLETICS IN MARYLAND	5
CONSTITUTION	6
PAST PRESIDENTS OF THE MPSSAA	11
FORMER EXECUTIVE DIRECTORS OF THE MPSSAA	11
GENERAL INFORMATION	MPSSAA Organizational Structure	12
	District Representatives	13
	Standing Committees	14
BY-LAWS	Authorization	18
	Eligibility	18
	Sports Season	19
	Operational Guidelines	22
	Violations, Penalties, and Appeals	25
	Classification	27
	State Tournament Policies	27
	Awards and Recognition	28
	Sanction Rules.....	28
	Amateur Rules	29
	Amendments	30
RULES AND INTERPRETATIONS	Definitions	31
	Outside Participation.....	32
	Maximum Number of Contests	
	Allowed per Season	32
	50% Sport Staff	32
	Care and Prevention of Athletic Injuries Course	32
	All Star Per Sport	35
	Out-of-Season Practice	35
	Camp Rule	36
	Misconduct Detrimental to a Tournament	37
	State Championship Criteria	37
	Award Criteria	37
	Loss of Instructional Time	37
OFFICIALS	Becoming an Official	38
	Certified Officials Boards	38
	Rules Interpreters	39
TOURNAMENTS	Tournament Committees.....	40
REFERENCES	Enrollment Data.....	45
	Participation Data	46
	Projected State Tournaments	47
	Quick Reference Calendar 2023-24	48
	2023 -24 Tentative Calendar of Events	49
ALPHABETICAL INDEX	50
SCHOOL DIRECTORY	52

RESOLUTION

*Adopted by the Superintendents
and the State Board of Education,
November 1, 1991.*

*Adopted by the MPSSAA State Board of Control,
December 7, 1991.*

WHEREAS, the Interscholastic Sports Program is an integral part of the education program;

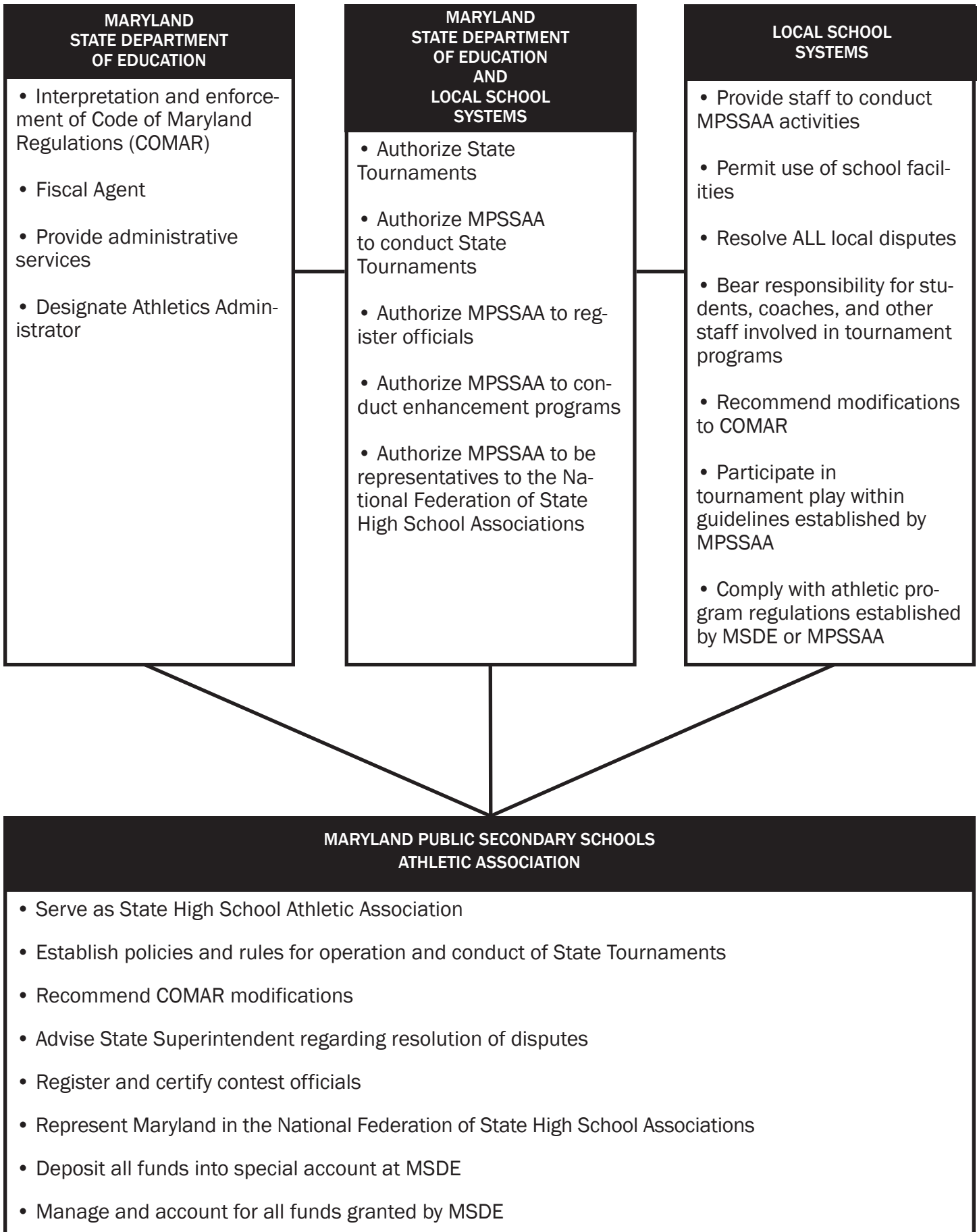
WHEREAS, it is essential to promote healthful living, character building, and good citizenship for students through competitive sports;

WHEREAS, emphasis shall be placed on equality of opportunity, wholesome competition, and safety of participation; and

WHEREAS, a Master Agreement has been enacted by the Maryland State Department of Education, the local school systems, and the Maryland Public Secondary Schools Athletic Association to divide responsibility in a formal manner for the oversight, conduct, and operation of public interscholastic programs in Maryland; therefore be it,

RESOLVED that the Maryland Public Secondary Schools Athletic Association shall be constituted as set forth herein to fulfill its obligation under the Master Agreement.

INTERSCHOLASTIC ATHLETICS IN MARYLAND



**MARYLAND PUBLIC SECONDARY SCHOOLS
ATHLETIC ASSOCIATION**

CONSTITUTION

(Adopted April 21, 1951, Amendments made April 5, 1952, April 10, 1954, March 9, 1963, March 14, 1964, March 12, 1966, March 8, 1969, March 14, 1970, March 27, 1971, March 25, 1972, March 31, 1973, March 31, 1974, March 15, 1975, December 5, 1987, December 7, 1991, December 10, 1994, December 10, 2003)

The State Board of Education, as recommended by the State Superintendent of Schools, shall establish rules and regulations governing athletic programs for all students in the Public Secondary Schools of Maryland, which shall be supervised by an organization known as the Maryland Public Secondary Schools Athletic Association and which shall function under the Division of Instruction of the State Department of Education. The administrator in Interscholastic Athletics shall serve as the Executive Director of the organization.

ARTICLE I — Name

This organization shall be known as the Maryland Public Secondary Schools Athletic Association.

ARTICLE II — Philosophy

The purpose of this Association shall be to promote, direct, and control all interscholastic activities of high school students; to establish, maintain, and enforce such regulations as may be necessary to assure that all such activities shall be part of and contribute toward the entire educational program of the state of Maryland; to cooperate closely with the state department of education in the development of that program to safeguard the physical, mental, and moral welfare of high school students and protect them from exploitation.

ARTICLE III — Purposes

Sec. 1—The Association shall supervise and administer all rules and regulations of the MPSSAA.

Sec. 2—The Association shall provide leadership in conducting athletic programs between the public schools in the state of Maryland.

Sec. 3—The Association shall recommend the development of new and innovative athletic programs.

Sec. 4—The Association shall promote clinics and assist in the distribution of instructional materials, including films, national rules and regulations, and other such aids.

Sec. 5—The Association shall register and certify athletic contest officials.

Sec. 6—The Association shall perform other functions as stated in the “*Master Agreement Outlining the Interscholastic Structure for Public Schools in Maryland*”.

ARTICLE IV — Membership

Sec. 1—All public high schools in Maryland who qualify under rules and regulations of the Maryland Public Secondary Schools Athletic Association may become members. Application for membership to the Association must be made by May 1 of any school year.

Sec. 2—A school having become a member of the MPSSAA shall continue as a member until such time as it withdraws its membership.

ARTICLE V — Organization

Sec. 1—A member school must abide by the rules and regulations of the Association.

Sec. 2—A local association may be formed by the member schools for the purpose of regulating and administering local athletic events. The rules enacted by any association must be in accordance with, or more restrictive than, those of the Maryland Public Secondary Schools Athletic Association.

Sec. 3—To facilitate effective conduct of Association business between meetings of the state board of control, there shall be an executive council composed of the president, president-elect, past-president, executive director, a representative of the Maryland Secondary Schools Principals Association, and a representative from each district association.

Sec. 4—The legislative powers of the Maryland Public Secondary Schools Athletic Association shall be entrusted to a board of control whose members shall be selected as follows:

- a. One delegate appointed by each county superintendent.
- b. Three superintendents to represent all county superintendents.
- c. Representatives from each of the counties, based on school enrollment in grades 9-11 in all member schools in that county, according to the following:

Enrollment	Representatives
1 - 11,999	1
12,000 - 19,999	2
20,000 - 27,999	3
28,000 - 35,999	4
36,000 and above	5

- d. Each appointed board of control member, if present, shall have one vote.

ARTICLE VI

Sec. 1—For the purpose of implementing activities of the Association, the state is divided into districts, the division to be as follows:

- District 1 —Allegany, Carroll, Frederick, Garrett, & Washington Counties
- District 2 —Montgomery County
- District 3 —Prince George’s County
- District 4 —Charles, Calvert, & St. Mary’s Counties
- District 5 —Anne Arundel & Howard Counties
- District 6 —Baltimore County
- District 7 —Cecil & Harford Counties
- District 8 —Caroline, Dorchester, Kent, Queen Anne’s, Somerset, Talbot, Wicomico, & Worcester Counties
- District 9— Baltimore City

Sec. 2—Each district association shall be comprised of member schools as established by Article VI, Section 1.

- a. Member representatives shall be professional employees as certified by the Maryland State Department of Education.

- b. All elected officers of the district association shall assume their offices as of June 1.
- c. Whenever a vacancy occurs, the unexpired term shall be filled by the remaining members of the association, or as otherwise specified in the bylaws of the district association.
- d. Each member school shall have one vote.

Sec. 3—At least one meeting shall be held each year.

Sec. 4—The officers of each district shall be a chairperson, assistant chairperson, and a secretary-treasurer.

Sec. 5—The chairperson shall have the power to call meetings of the district association. The chairperson shall preside over all meetings, and shall have the power to appoint, with the approval of the district board of control, such committees as are deemed necessary.

Sec. 6—The assistant chairperson shall preside in the absence of the chairperson.

Sec. 7—The secretary-treasurer shall keep a record of the proceedings of meetings, conduct all necessary correspondence, and handle the finances of the district association. The position of secretary-treasurer shall be bonded by MPSSAA.

Sec. 8—The district association may determine all necessary fiscal procedures for the efficient operation of the business and other activities of the respective district programs.

Sec. 9—The district association may create subcommittees to which it may delegate specific functions.

Sec. 10—The district association shall have the power to fill vacancies by appointment and the officers shall serve until the next regular election.

Sec. 11—The district associations are empowered to perform such functions not delegated to the state board of control, to assist in the organization and administration of the intercounty interscholastic athletic program within their respective districts, and to recommend study and action by the state board of control.

ARTICLE VII — Meetings

Sec. 1—Meetings of the board of control shall be held in the winter and spring of each year at a time and place designated by the president of MPSSAA.

Sec. 2—A quorum of the board of control (one-half of the delegates plus one) must be present to take official action at scheduled meetings.

ARTICLE VIII — Officers

Sec. 1—The elected officers of this Association shall be a president and a president-elect.

Sec. 2—The president and the president-elect shall serve a term of two years. They shall begin their term of office by June 1 of the year in which they are elected.

- a. The retiring president shall serve as past-president until duly succeeded.
- b. The president shall have power to call meetings of the Association and to preside over them. The president shall appoint such committees as are designated in Article IX, Section 1 and Section 2 of the constitution.
- c. The president-elect shall preside in the absence of the president; the past-president shall preside in the absence of both the president and the president-elect.

Sec. 3—The Maryland State Department of Education administrator in interscholastic athletics shall serve as non-voting director of the Association.

- a. The executive director shall keep a record of the proceedings of meetings, conduct all necessary correspondence, and keep official records of meets and tournaments sponsored by the Association at the state level. He/she shall present the report of the fiscal representatives on finances of the Association at all board of control meetings and at other times at the request of the state board of control. He/she shall perform such other duties as are requested by the state board of control consistent with the “**Master Agreement**”.

ARTICLE IX — Committees

Sec. 1—The president, with the recommendation of the district associations, shall appoint committees as follows:

- a. Nominating
- b. Finance
- c. Constitution
- d. Tournaments
- e. Classification
- f. Appeals
- g. Officials

Sec. 2—The president, with the approval of the executive council, shall appoint such additional committees as are deemed necessary.

Sec. 3—All committees, except a and f, in Section 1 above, shall submit all proposals to the executive council for review and/or recommendation to the board of control.

ARTICLE X — Public Secondary School Interscholastic Athletic Revenues

Sec. 1—MPSSAA shall deposit all revenues generated by the operation of public secondary school interscholastic athletic programs into a special revenue account at MSDE entitled “Public Secondary School Interscholastic Athletic Revenues.”

Sec. 2—MSDE officials shall serve as fiscal agents for this account and shall administer it according to State policies and procedures.

Sec. 3—MPSSAA shall submit disbursement requests to the MSDE athletics coordinator. Upon approval, the MSDE athletics coordinator shall warrant the release of funds and authorize the issuing of checks chargeable to the Public Interscholastic Secondary Schools Athletic Revenues account.

Sec. 4—Disbursements of funds shall be predicated on policies determined by MSDE and the participating LEAs.

Sec. 5—MPSSAA shall manage all funds in accordance with State policies and procedures.

Sec. 6—MPSSAA shall present to MSDE and to all participating LEAs an annual financial statement which will include its annual budget and an accounting for all revenues generated and disbursed for the operation of the public secondary schools interscholastic athletic programs.

Sec. 7—Upon request from the MPSSAA, the MSDE fiscal officer may deposit reserves from the Public Secondary School Interscholastic Athletic Revenues account into the Local Government Investment Pool.

Sec. 8—The MPSSAA shall maintain comprehensive liability insurance coverage of not less than \$100,000 for each occurrence.

ARTICLE XI — Amendments

Amendments to the constitution may be made as follows:

Sec. 1—The proposed written amendment(s) may be submitted by a member school, county association, district association, state board of control, county board of education, state board of education, county superintendent, and state superintendent of schools to the executive director at least forty-five (45) days before the first annual meeting.

- a. Unless an emergency has been declared by the president, constitutional amendments can only be proposed and voted upon during an even-numbered school year with 1989-90 being considered as an even numbered school year.

Sec. 2—Upon receipt of such amendment(s), they shall be referred to the constitution committee for appropriate action and recommendation.

Sec. 3—Notice of the proposed amendment(s) shall be sent to each member school, members of the executive council, board of control, local and state board members, and county and state superintendents of schools at least fifteen (15) days before the first annual meeting.

Sec. 4—Ratification of the proposed amendment(s) shall require a 2/3's majority vote of the delegates of the board of control present at the first annual meeting.

Sec. 5—Amendments approved by the board of control shall be forwarded to the state superintendent and local superintendents of schools.

ARTICLE XII — Resolution of Problems

Sec. 1—Problems involving member schools shall be referred to the local superintendent of schools for approval and appropriate action within his/her jurisdiction. Disputes or protests involving two member school systems shall be referred to superintendents of the schools involved for settlement. Disputes not resolved within or between local school jurisdictions shall be referred to the state board of control appeals committee for further action.

Sec. 2—A superintendent shall consider a protest official when he/she has received a written protest from a principal of a member school in his/her jurisdiction, or from a superintendent in another system by June 30 of that school year.

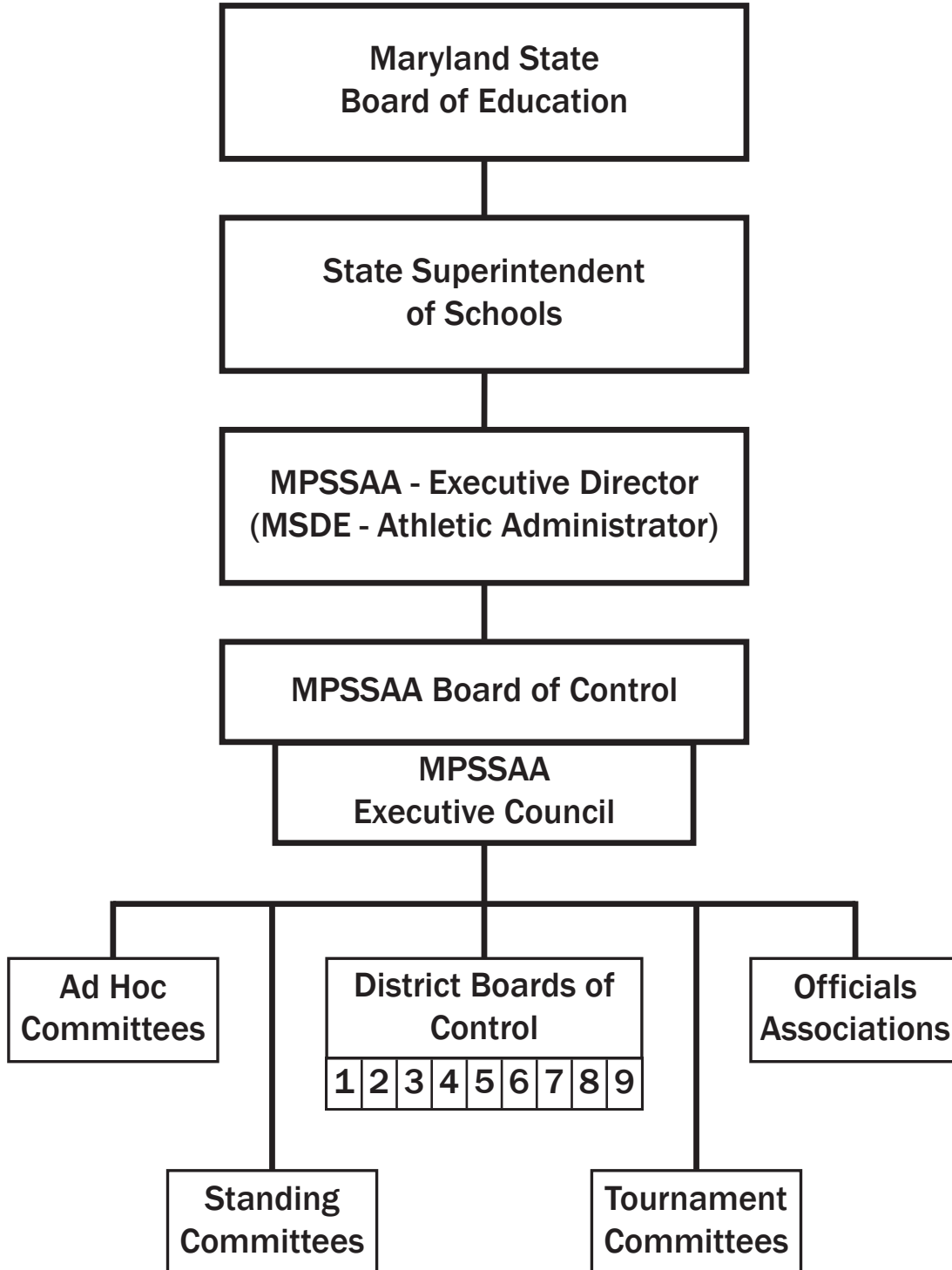
**MARYLAND PUBLIC SECONDARY SCHOOLS
ATHLETIC ASSOCIATION
– Past Presidents –**

1947-48	William Brish	1974-76	Earl Hersh
1949-50	William Brish	1976-78	Robert M. Foster
1950-51	George Carrington	1978-80	Mildred H. Murray
1951-52	George Carrington	1980-82	Robert E. Pence
1952-53	Arthur Ramey	1982-84	Jim Heins
1953-54	Ellery Ward	1984-86	Roy Comer
1954-55	Crescent J. Bride	1986-88	Clarence Johnson
1955-56	Stephan A. Lerda	1988-90.....	W. Cecil Short
1956-57	Edward Semler	1990-92	Chuck Brown
1957-58	Charles Hudson	1992-94	Patricia Barry
1958-59	Warren R. Evans	1994-96	Ronald J. Belinko
1959-60	Robert E. Pence	1996-98	Donald E. Cooke
1960-61	Charles R. Berry	1998-00	Mary Etta Reedy
1961-62	Vincent C. Holochwost	2000-02	Marlene Kelly
1962-63	William J. Callaghan	2002-04	Robert P. Wade
1963-64.....	G. Wayne Burgemeister	2004-06	Jay Berno
1964-65.....	William E. Dykes, Jr.	2006-08	David Byrd
1965-66	Jack Willard	2008-10.....	Andrew Roper
1966-67	Edward Finzel	2010-12.....	William Beattie
1967-68	Harold S. Martin	2012-14	Earl Hawkins
1968-69	Crescent J. Bride	2014-16	Kimberly N. Dolch
1969-70	Warren Squires	2016-18	Kevin Hook
1970-71	Marvin C. Joy	2018-20	Dana Johnson
1971-72	John E. Molesworth	2020-22.....	Michael Duffy
1972-73.....	Robert Melville		
1973-74	Albert Cesky		

– Former Executive Directors –

1946-51	Thomas C. Ferguson
1951-70.....	Herbert R. Steiner
1970-71.....	Paul Rusko
1971-81.....	John E. Molesworth
1981-2015	Edward F. Sparks

**MARYLAND
PUBLIC SECONDARY SCHOOLS
ATHLETIC ASSOCIATION**



Organizational Structure

**MPSSAA BOARD OF CONTROL
DISTRICT REPRESENTATIVES 2022-2023**

MPSSAA Board President - Michael Sye - Director of Athletics, Baltimore County

DISTRICT 1

Allegany County

1. Tracey Leonard—Asst. Supervisor, Allegany Co.
2. Dave Hobel Jr.—Athletic Dir., Mountain Ridge HS

Carroll County

1. Michael Duffy, Supervisor, Carroll Co.
2. Liz Padgett, Athletic Director, Manchester Valley

Frederick County

1. Kevin Kendro—Supervisor, Frederick Co.
2. Mike Chavez—Ath. Dir., Gov. Thomas Johnson HS

Garrett County

1. Paul Edwards—Dir. of Sec. Education, Garrett Co.
2. James H. Maddy—Principal, Northern-G HS

Washington County

1. Eric Michael—Supervisor, Washington Co.
2. Mike Chilcutt—Principal, North Hagerstown HS

DISTRICT 2

Montgomery County

1. Dr. Jeffrey Sullivan—Director of Athletics, MCPS
2. E. Kathy Green—Athletics Specialist, MCPS
3. Anne Rossiter, Compliance Specialist, MCPS
4. Heather Podosek—Athletic Dir., Paint Branch HS
5. Bryan Walker—Athletic Director, Wheaton HS
6. Jared Fribush—Athletic Dir., James H. Blake HS

DISTRICT 3

Prince George's County

1. Shirley Diggs—Coordinating Supervisor,
Prince George's Co.
2. George McClure—Supervisor, Prince George's Co.
3. Nathaniel Laney —Principal, Potomac HS
4. Thomas Green—Athletic Direc., El. Roosevelt HS
5. Cecille Greenfield—Athletic Direc., Oxon Hill HS

DISTRICT 4

Calvert County

1. Kevin Hook, J.D. —Supervisor, Calvert County
2. Dr. Susan Johnson — Calvert Co. Public Schools

Charles County

1. Steve Lee—Coordinator, Charles Co.
2. Andy Shattuck—Athletic Dir., North Point HS

St. Mary's County

1. Michael Watson—Director, St. Mary's Co.
2. Ryan Hanley— Athletic Director, Great Mills HS

DISTRICT 5

Anne Arundel County

1. Clayton Culp—Athletics Coord., Anne Arundel Co.
2. Brian Layman—Athletic Specialist, Anne Arundel Co.
3. Jamie Cook—Athletic Director, Meade HS

Howard County

1. John Davis—Athletics Coord., Howard Co.
2. Jeannie Prevosto—AAM, Centennial HS
3. Elizabeth DeFrances, AAM, Howard HS

DISTRICT 6

Baltimore County

1. Lynette Mitzel—Supervisor, Baltimore Co.
2. David Deutsch—Ath. Director, Eastern Technical HS
3. Dana Loverde—Athletic Director, Pikesville HS
4. Jeff Markle—Athletic Director, Parkville HS

DISTRICT 7

Cecil County

1. Amy Sexton—Supervisor, Cecil Co.
2. George Rash—Athletic Director, Perryville HS

Harford County

1. Debbie Basler—Supervisor, Harford Co.
2. Heather Crawford—Ath. Dir., Havre de Grace HS

DISTRICT 8

Caroline County

1. Jon Marketto—Supervisor, Caroline Co.
2. Brett Ireland—Ath. Dir., Col. Richardson HS

Dorchester County

1. Kirk Howie—Supervisor, Dorchester Co.
2. David Morrisette— Ath. Dir. North Dorchester HS

Kent County

1. Kevin Taylor—Supervisor, Kent County
2. Kris Hemstetter—Principal, Kent County HS

Queen Anne's County

1. Sidney Pinder—COO, Queen Anne's Co.
2. Dan Harding—Athletic Director, Kent Island HS

Somerset County

1. Cortney Monar—Supervisor, Somerset Co.
2. Greg Bozman—Athletic Director, Crisfield HS

Talbot County

1. Kurisha Hoffman—Supervisor, Talbot Co.
2. Brian Femi—Athletic Director, St. Michaels HS

Wicomico County

1. Bryan Ashby—Supervisor, Wicomico Co.
2. Stosh Schtierman—Athletic Dir., Wicomico HS

Worcester County

1. Sam Slacum—Supervisor, Worcester Co.
2. Derrick Fooks—Athletic Director, Pocomoke HS

DISTRICT 9

Baltimore City

1. Tiffany Byrd—Director, Baltimore City
2. Tonisha Montgomery—Coordinator, Baltimore City
3. Jason Williams—Athletic Dir., Southwestern HS

**Public School Superintendent
Association of Maryland (PSSAM)**

PSSAM Representatives

1. Dr. Monica E. Goldson—CEO,
Prince George's County
2. Dr. Jeffrey A. Lawson - Superintendent
Cecil County
3. Dr. John B. Gaddis - Superintendent
Somerset County

MPSSAA STANDING COMMITTEES

EXECUTIVE COUNCIL

Michael Sye – **President, MPSSAA**
 Dr. Jeffrey Sullivan – **President-Elect**
 Michael Duffy – **Past President**

DISTRICT 1

Kevin KendroFrederick County

DISTRICT 2

E. Kathy GreenMontgomery County

DISTRICT 3

Shirley DiggsPrince George’s County

DISTRICT 4

Steve Lee.....Charles County

DISTRICT 5

John DavisHoward County

DISTRICT 6

Jeff MarkleParkville HS

DISTRICT 7

Debbie BaslerHarford County

DISTRICT 8

Bryan Ashby.....Wicomico County

DISTRICT 9

Tiffany ByrdBaltimore City

PRINCIPALS’ REPRESENTATIVE

Patrick SaundersonHoward County

DISTRICT ASSOCIATION OFFICERS PRESIDENT

District 1

Terry MolloyWestminster HS

District 2

Dr. Jeffrey SullivanMontgomery Co.

District 3

Cecille GreenfieldOxon Hill HS

District 4

Steve Lee.....Charles Co.

District 5

Kenny MillerNortheast-AA HS

District 6

Michael SyeBaltimore Co.

District 7

George RashPerryville HS

District 8

Dan Harding.....Kent Island HS

District 9

Tiffany ByrdBaltimore City

DISTRICT ASSOCIATION OFFICERS SECRETARY

District 1

Liz PadgettManchester Valley HS

District 2

Anne RossiterMontgomery Co.

District 3

Cecille GreenfieldOxon Hill HS

District 4

Michael WatsonSt. Mary’s Co.

District 5

John DavisHoward Co.

District 6

Michael SyeBaltimore Co.

District 7

Tim LindecampAberdeenHS

District 8

Kirk HowieDorchester Co.

District 9

Yolanda SmallWestern-B HS

DISTRICT ASSOCIATION OFFICERS TREASURER & FINANCE COMMITTEE

District 1

Mike Chavez.....Gov. Thomas Johnson HS

District 2

Jeffrey SullivanMontgomery Co.

District 3

Shirley DiggsPrince George’s Co.

District 4

Kevin HookCalvert Co.

District 5

Clayton Culp.....Anne Arundel Co.

District 6

Lynette Mitzel.....Baltimore Co.

District 7

Gary BrownNorth East-C HS

District 8

Teresa BanksWicomico Co.

District 9

Tonisha MontgomeryBaltimore City

MPSSAA STANDING COMMITTEES

APPEALS COMMITTEE

- DISTRICT 1**
Michael DuffyCarroll Co.
- DISTRICT 2**
Anne RossiterMontgomery Co.
- DISTRICT 3**
Shirley DiggsPrince George's Co.
- DISTRICT 4**
Kevin HookCalvert Co.
- DISTRICT 5**
Clayton Culp.....Anne Arundel Co.
- DISTRICT 6**
Lynette Mitzel.....Baltimore Co.
- DISTRICT 7**
Amy Sexton.....Cecil Co.
- DISTRICT 8**
Bryan AshbyWicomico Co.
- DISTRICT 9**
Tina QueenReginald Lewis HS
- PRINCIPALS' REPRESENTATIVE**
Dr. Afie Mirshah-NayarPaint Branch HS

CLASSIFICATION COMMITTEE

- DISTRICT 1**
Eric MichaelWashington Co.
- DISTRICT 2**
Dr. Jeffrey SullivanMontgomery Co.
- DISTRICT 3**
Thomas GreenEleanor Roosevelt HS
- DISTRICT 4**
Steve LeeCharles Co.
- DISTRICT 5**
John DavisHoward Co.
- DISTRICT 6**
Michael SyeBaltimore Co.
- DISTRICT 7**
Debbie BaslerHarford Co.
- DISTRICT 8**
Stosh SchtiermanWicomico HS
- DISTRICT 9**
Tiffany ByrdBaltimore City
- PRINCIPALS' REPRESENTATIVE**
Joseph CollinsHarford Technical HS

CONSTITUTION COMMITTEE

- DISTRICT 1**
Kevin KendroFrederick Co.
- DISTRICT 2**
E. Kathy GreenMontgomery Co.
- DISTRICT 3**
Brian MooreParkdale HS
- DISTRICT 4**
Steve LeeCharles Co.
- DISTRICT 5**
John DavisHoward Co.
- DISTRICT 6**
Michael SyeBaltimore Co.
- DISTRICT 7**
Amy Sexton.....Cecil Co.
- DISTRICT 8**
Stosh SchtiermanWicomico HS
- DISTRICT 9**
Tiffany ByrdBaltimore City

EQUITY COMMITTEE

- DISTRICT 1**
Eric MichaelWashington Co.
- DISTRICT 2**
Anne RossiterMontgomery Co.
- DISTRICT 3**
George McClure.....Prince George's Co.
- DISTRICT 4**
Steve LeeCharles Co.
- DISTRICT 5**
Clayton Culp.....Anne Arundel Co.
- DISTRICT 6**
Michael SyeBaltimore Co.
- DISTRICT 7**
Debbie BaslerHarford Co.
- DISTRICT 8**
Mary FisherNorth Caroline HS
- DISTRICT 9**
Yolanda SmallWestern-B HS

MPSSAA STANDING COMMITTEES

NOMINATING COMMITTEE

- DISTRICT 1**
Michael DuffyCarroll Co.
- DISTRICT 2**
Jeffrey Rabberman.....Quince Orchard HS
- DISTRICT 3**
Shirley DiggsPrince George's Co.
- DISTRICT 4**
Michael WatsonSt. Mary's Co.
- DISTRICT 5**
Clayton Culp.....Anne Arundel Co.
- DISTRICT 6**
Lynette Mitzel.....Baltimore Co.
- DISTRICT 7**
Tim Lindecamp.....Aberdeen HS
- DISTRICT 8**
Dan Harding.....Kent Island HS
- DISTRICT 9**
Tiffany ByrdBaltimore City

OFFICIALS COMMITTEE

- DISTRICT 1**
Eric MichaelWashington Co.
- DISTRICT 2**
Marco FuggittiNorthwood HS
- DISTRICT 3**
George McClurePrince George's County
- DISTRICT 4**
Kevin HookCalvert Co.
- DISTRICT 5**
John DavisHoward Co.
- DISTRICT 6**
Lynette Mitzel.....Baltimore Co.
- DISTRICT 7**
George RashPerryville HS
- DISTRICT 8**
Rick RomanWicomico Co.
- DISTRICT 9**
Tonisha MontgomeryBaltimore City

SCHOLAR-ATHLETE COMMITTEE

- DISTRICT 1**
Dave Hobel.....Mountain Ridge HS
- DISTRICT 2**
E. Kathy GreenMontgomery Co.
- DISTRICT 3**
Carlyle RoseC.H. Flowers HS
- DISTRICT 4**
Ryan HanleyGreat Mills HS
- DISTRICT 5**
John DavisHoward Co.
- DISTRICT 6**
Lynette Mitzel.....Baltimore Co.
- DISTRICT 7**
Bruce KlineBohemia Manor HS
- DISTRICT 8**
Dan Harding.....Kent Island HS
- DISTRICT 9**
Jarrett Ingram.....New Era Academy

STUDENT LEADERSHIP COMMITTEE

Director: Michael Duffy, Carroll Co.

- DISTRICT 1**
William GrossGov. Thomas Johnson HS
- DISTRICT 2**
Jody TylerNorthwest HS
- DISTRICT 3**
Terri DendyNorthwestern-PG HS
- DISTRICT 4**
Michael WatsonSt. Mary's Co.
- DISTRICT 5**
Kyle HinesGlen Burnie HS
- DISTRICT 6**
David Deutsch.....Eastern Technical HS
- DISTRICT 7**
Debbie Basler.....Harford Co
- DISTRICT 8**
Kurisha HoffmanEaston HS
- DISTRICT 9**
Phil Thompson.....Balto. Polytechnic Institute

MPSSAA STANDING COMMITTEES

SPORTSMANSHIP COMMITTEE

DISTRICT 1

Ryan KimbleFrancis Scott Key

DISTRICT 2

Anne RossiterMontgomery Co.

DISTRICT 3

George McClure.....Prince George's Co.

DISTRICT 4

Michael WatsonSt. Mary's Co.

DISTRICT 5

Clayton Culp.....Anne Arundel Co.

DISTRICT 6

David Deutsch.....Eastern Tech HS

DISTRICT 7

Debbie BaslerHarford Co.

DISTRICT 8

Kirk HowieDorchester Co.

DISTRICT 9

TBA.....Baltimore City

MARYLAND STATE BOARD OF EDUCATION
Subtitle 06 SUPPORTING PROGRAMS

Chapter 03 Interscholastic Athletics in the State

Authority: Education Article, §§2-205 and 2-303(k),
Annotated Code of Maryland

.01 Authorization

- A. The following regulations have been established by the State Superintendent of Schools to govern the athletic program for all high school students in Maryland public secondary schools which are members of the Maryland Public Secondary Schools Athletic Association (MPSSAA).
- B. Local school systems may adopt rules governing their athletic programs that are more restrictive than those of the MPSSAA. Less restrictive rules may not be adopted.

.02 Eligibility

Student eligibility for participation in interscholastic athletics at the high school level shall be based on the following criteria:

- A. Students shall be officially registered and attending the member MPSSAA school they are authorized to attend under regulations of the local school system. They may represent only the school in which they are registered and at which it is anticipated they will complete their graduation requirements.
- B. Each local school system shall establish standards of participation which assure that students involved in interscholastic athletics are making satisfactory progress toward graduation.
- C. Students who are 19 years old or older as of August 31 are ineligible to participate in interscholastic athletics.
- D. Students in grades 9, 10, 11, and 12 may participate in interscholastic athletic contests for a maximum of four seasons in any one sport.
- E. Middle, intermediate, or junior high school students are not eligible to compete or practice with high school teams. However, ninth grade public school students who reside in the attendance area of a high school organized grades 10–12 may participate in the interscholastic athletic program of that high school.
- F. Students shall maintain amateur status as defined by Regulation .10 of this chapter.
- G. Students, while participating on a school team, are permitted to participate on sports teams outside of school during the high school sport's season. This participation shall meet the following criteria:
 - (1) The outside participation may not conflict with the practice or contests schedule of the school including district, regional, and State championship play unless prior written approval has been obtained from the school principal and coach;
 - (2) Students who elect to participate on an outside team and do not participate and practice with the school team throughout the designated sport's season are ineligible to represent the school in all contests that determine a county, district, regional, or State championship during that sport season.
- H. Students shall present to their high school principal a certificate of permission to participate signed by their parent(s) or guardian(s).
- I. Students shall be examined and certified to the high school principal as being physically fit to participate in any try-out, practice, or contest of a school team. The examination shall be performed by a licensed physician, certified physician assistant under the supervision of a licensed physician, or certified nurse practitioner.

J. Students legally transferred to another school may participate. “Legally transferred” means a change of residence or a transfer from one school to another by action approved by the local superintendent of schools.

K. Graduates.

(1) Graduates of high schools are not eligible to practice with or participate on interscholastic sports teams. However, they may participate in the remaining athletic contests of that semester.

(2) Students are considered graduates when they have completed the work required for graduation and are declared graduates by the local board of education.

.03 Sports Season

Member MPSSAA schools shall conduct all interscholastic athletic contests and practice sessions in accordance with the following:

A. The sports seasons shall be defined as follows:

(1) “Fall” means the 6th Wednesday following the first Sunday of July, until the final date of the local, conference, district, regional, or State tournament.

(2) “Winter” means November 15th until the final date of the local, conference, district, regional, or State tournament.

(3) “Spring” means March 1st until the final date of the local, conference, district, regional, or State tournament.

(4) When November 15th or March 1st falls on Sunday, practice will start the preceding Saturday.

(5) Sanctioned Events. Local school systems may approve the participation of member schools to practice and compete in sanctioned National Federation of High Schools (NFHS) and MPSSAA events outside the defined sport season.

(6) Required Practice. A member MPSSAA school may not participate in a regularly scheduled game until at least 20 calendar days have elapsed after and including the first day of practice. Golf is the only exception to this regulation.

B. Maximum Number of Contests Permitted During a Sports Season.

(1) All school athletic schedules shall be established according to the following instructions:

(a) Badminton

(i) 15 regular season games;

(ii) No more than two matches per week; and

(iii) Three matches in one week may be scheduled twice during the season.

(b) Baseball

(i) 18 regular season games or 20 with designated optional tournament;

(ii) No more than three games per week;

(iii) A team may elect to play in one designated optional two or three-game tournament;

(iv) If a team elects to play in a designated optional three-game tournament, only 17 regular season games may be scheduled; and

(v) If a team elects to play in the designated optional two or three-game tournament, a fourth game may be played during that week.

- (c) Basketball
 - (i) 20 regular season games or 22 with designated optional tournament;
 - (ii) No more than two games per week;
 - (iii) Three games in one week may be scheduled twice during the season;
 - (iv) A team may elect to play in one designated optional two or three-game tournament; and
 - (v) If a team elects to play in a designated optional three-game tournament, only 19 regular season games may be scheduled.
- (d) Cross Country
 - (i) 10 regular season meets;
 - (ii) No more than two meets per week; and
 - (iii) Three meets in one week may be scheduled once during the season.
- (e) Field Hockey
 - (i) 12 regular season games or 14 with designated tournament;
 - (ii) No more than two games per week;
 - (iii) Three games in one week may be scheduled twice during the season;
 - (iv) A team may elect to play in one designated optional two or three-game tournament; and
 - (v) If a team elects to play in a designated optional three-game tournament, only 11 regular season games may be scheduled.
- (f) Football
 - (i) 10 regular season games; and
 - (ii) No more than one game per week.
- (g) Golf
 - (i) 12 regular season matches; and
 - (ii) No more than three matches per week.
- (h) Gymnastics
 - (i) 8 regular season meets;
 - (ii) No more than two meets per week; and
 - (iii) Meets may not be held on consecutive days.
- (i) Indoor Track
 - (i) 10 regular season meets;
 - (ii) No more than two meets per week; and
 - (iii) Three meets in one week may be scheduled once during the season.
- (j) Lacrosse
 - (i) 12 regular season games or 14 with designated optional tournament;
 - (ii) No more than two games per week;
 - (iii) Three games in one week may be scheduled twice during the season; and

- (iv) A team may elect to play in one designated optional two-game tournament.
- (k) Outdoor Track
 - (i) 10 regular season meets;
 - (ii) No more than two meets per week; and
 - (iii) Three meets in one week may be scheduled once during the season.
- (l) Soccer
 - (i) 12 regular season games or 14 with designated optional tournament;
 - (ii) No more than two games per week;
 - (iii) Three games in one week may be scheduled twice during the season;
 - (iv) A team may elect to play in one designated optional two or three-game tournament; and
 - (v) If a team elects to play in a designated optional three-game tournament, only 11 regular season games may be scheduled.
- (m) Softball
 - (i) 18 regular season games or 20 with designated optional tournament;
 - (ii) No more than three games per week;
 - (iii) A team may elect to play in one designated optional two or three-game tournament;
 - (iv) If a team elects to play in a designated optional three-game tournament, only 17 regular season games may be scheduled; and
 - (iv) If a team elects to play in the designated optional two or three-game tournament, a fourth game may be played during that week.
- (n) Swimming
 - (i) 12 regular season meets;
 - (ii) No more than two meets per week; and
 - (iii) Three meets in one week may be scheduled once during the season.
- (o) Tennis
 - (i) 18 regular season matches; and
 - (ii) No more than three matches per week.
- (p) Volleyball
 - (i) 15 regular season matches or 14 with designated optional tournament;
 - (ii) No more than two matches per week;
 - (iii) Three matches in one week may be scheduled twice during the season;
 - (iv) A team may elect to play tri-matches provided the total number of opponents does not exceed 15 during the season; and
 - (v) Teams may play 14 matches plus one designated optional multi-team tournament.

(q) Wrestling

- (i) 14 regular season contests including dual meets and a maximum of three tournaments and three tri-meets;
 - (ii) Not more than two contests per week including a maximum of one tournament;
 - (iii) Multi-team events may be used to make up postponed contests between teams originally scheduled;
 - (iv) Three contests may be scheduled one time during the season on a nontournament week;
 - (v) A city/county/conference tournament required to qualify for the state tournament will not be counted as one of the three allowed tournaments; and
 - (vi) Wrestling tournaments and meets are defined by Regulation .04D(3) and (4) of this chapter.
- (2) Conference/League Championships.** One additional contest beyond the maximum allowable number may be played to determine a conference/league championship. The results of that contest may not count towards MPSSAA standings.
- (3) Postponed Games.** Postponed contests may be rescheduled during the season, provided the number of games does not exceed the maximum number permitted in a week plus one additional contest.

.04 Operational Guidelines

The regulations given below are established for all MPSSAA interscholastic sports:

(A) Equal Opportunity for Participation.

- (1) Students may not be excluded on the basis of sex from overall equal opportunity to participate in athletic programs. If a school sponsors a team in a particular sport for members of one sex but sponsors no such team for members of the opposite sex, and before July 1, 1975, overall opportunities for members of the excluded sex have been limited, the excluded sex shall be allowed to try out for the team.
- (2) Athletics Equity for Students with Disabilities.
 - (a) Students who meet the eligibility requirements of Regulation .02 of this chapter may not be excluded on the basis of disability from the opportunity to try out for and if selected, participate in mainstream interscholastic athletic programs.
 - (b) Member MPSSAA schools shall provide reasonable accommodations necessary to provide students with disabilities with equal opportunities to participate to the fullest extent possible in mainstream athletic programs.
 - (c) Students with disabilities who meet the eligibility requirements of Regulation .02 of this chapter may be excluded from mainstream athletic programs if inclusion:
 - (i) Presents an objective safety risk to the student or others based on an individualized assessment of the student; or
 - (ii) Fundamentally alters the nature of the school's mainstream athletic program.

(B) MPSSAA Coaching Eligibility.

- (1) Member MPSSAA schools shall employ as coaches:
 - (a) Teachers or certificated professional educator employed by the local Board of Education.
 - (b) Persons certifiable as professional educators by the State Department of Education according to 13A.12.01.
 - (c) Credentialed coaches who meet the following requirements:

- (i) Are eligible to hold a Maryland certificate under COMAR 13A.12.01.03D;
 - (ii) Possess a MPSSAA/MSDE Coaching Certification;
 - (iii) Have completed two years of successful coaching as an emergency coach; and
 - (iv) Have spent the previous one year as a successful emergency coach at the school of hire in the position of hire.
- (2) If no acceptable and qualified coaches are available from the teachers or certifiable professional educators employed by the local board of education, a temporary emergency coach may be employed if the following procedures are followed:
- (a) The person shall be officially appointed by the local superintendent of schools on a one-season basis for a specific coaching assignment;
 - (b) The coaching salary of the appointed coach shall be paid exclusively by the local school system;
 - (c) After July 1, 2010, an emergency coach is required to possess an MPSSAA/MSDE coach certification prior to the start of his or her fourth year as an emergency coach;
 - (d) Teams having more than one coach, emergency coaches may not comprise more than 50 percent of that sport staff;
 - (e) The emergency coach shall be at least 21 years old and possess a high school diploma.
- (3) All coaches shall have completed or be enrolled in a one-credit course in the prevention and care of athletic injuries.
- (4) Member MPSSAA schools may permit volunteer athletic coaches to assist their coaching staff. The volunteer coaches may not serve as head coaches at any level and shall work only under the direction of the head coach. The volunteer coach may be used if the following procedures are followed:
- (a) The volunteer coach is at least 21 years old and possesses a high school diploma or equivalent;
 - (b) The volunteer coach shall have completed or be enrolled in a one-credit course in the prevention and care of athletic injuries;
 - (c) The volunteer coach shall be formally appointed on a 1-season basis for a specific coaching assignment.

C. Limits of Participation.

- (1) Each local school system and state tournament committee shall establish guidelines that ensure a minimum loss of instructional time for coaches and students involved in interscholastic athletic contests.
- (2) Students who participate on both varsity and junior varsity teams may not play in a number of contests that exceed the maximum number allowed for that sport in a week or season. Students may not compete on both a varsity and junior varsity level against the same school on the same day.
- (3) **Except as set forth in Regulation .03 of this chapter** school athletic teams may not participate in any contests representing their school.
- (4) Member MPSSAA schools may not play or practice on Sundays.
- (5) Individual students may participate in all-star games and events, upon completion of their eligibility in the sport in which this participation occurs.
- (6) Member MPSSAA schools shall practice with or play against only high school teams as defined in §H of this regulation.

- (7) Individual students or teams representing a member MPSSAA school shall participate only in games, meets, or tournaments which are conducted by appropriate educational institutions.
- (8) Member MPSSAA schools may not enter competition preliminary to a college or professional game.
- (9) A varsity or junior varsity team member of the previous season may not participate in interscholastic competition and in intramurals or school sponsored athletic programs in the same sport outside the sport season.

D. Policies Pertaining to Wrestling.

- (1) Students shall have their minimum weight class in which they can wrestle certified by a qualified physician before the students' first match.
- (2) Students may not wrestle below the minimum weight class established for them at the time of certification.
- (3) A wrestling meet is a contest involving two or three schools.
- (4) A wrestling tournament is a contest involving four or more schools.

E. Out-of-Season Practice.

- (1) Member MPSSAA schools and coaches of member schools shall confine school practices to:
 - (a) The seasonal limitations as defined in Regulation .03 of this chapter; or
 - (b) Approved local school system sponsored camps.
- (2) A coach may not coach a team representing the coach's school beyond the defined competition opportunities designated in Regulation .03 of this chapter unless during approved local school system sponsored summer camps.

F. Sports Officials. Schools involved in interscholastic contests shall use only those officials certified by MPSSAA. Only qualified officials shall be used in all sports when MPSSAA certified officials are not available.

G. Summer Camps.

- (1) Students may attend a summer sports camp of their choice.
- (2) Students and member schools may participate in summer camps that are sponsored by the local school system.
- (3) MPSSAA member schools and coaches may not require school personnel or students to participate in a summer camp.
- (4) Participation in summer camps is strictly voluntary and does not have any bearing on seasonal participation.
- (5) It is a violation of the out-of-season practice rule established in Regulation .03 of this chapter for coaches of member MPSSAA schools, while affiliated with a camp that is not sponsored by the local school system, to conduct any form of team or group practice involving their school.
- (6) A member MPSSAA school may not provide school uniforms or equipment for students who attend a camp outside of the defined sports season in Regulation .03 of this chapter.

H. Competitors.

- (1) Member MPSSAA schools shall only practice with or play against high school teams that:
 - (a) Ensure fair competition, athlete safety, and appropriate supervision by a responsible entity;
 - (b) Maintain athletics as an integral part of the total educational program;

- (c) Promote academic progress;
 - (d) Develop leadership; and
 - (e) Deter exploitation of students.
- (2) High school teams that meet these purposes include high school teams that:
- (a) Are members of a state interscholastic athletic association recognized by the National Federation of High Schools (NFHS);
 - (b) Have been approved to play members of a state interscholastic athletic association recognized by the NFHS;
 - (c) Are members of an athletic conference that:
 - (i) Formally adopts the standards of competition as established by the Maryland State Superintendent of Schools as part of its constitution and bylaws; and
 - (ii) Has enforcement authority; or
 - (d) Represent a school that verifies compliance with standards of competition as established by the Maryland State Superintendent of Schools.
- (3) To verify compliance under §H(2)(d) of this regulation, the administrative head of the school who is responsible for the day-to-day administration of the school shall:
- (a) Sign the verification provided by the Maryland State Department of Education; and
 - (b) Submit the verification for approval to the State Superintendent of Schools annually before the first practice or athletic competition against a member MPSSAA school team.

.05 Violations, Penalties, and Appeals

- A. Failure to comply with these regulations shall constitute a violation which will result in the following penalties against the member MPSSAA school and either the student or the coach, or both. Depending upon the severity of the violation, more than one penalty may be imposed against the member MPSSAA school, student, or coach, or all of the above. Penalties shall be imposed in the order listed below:
- (1) Against a member MPSSAA school:
- (a) First—Declare forfeit of all games in which the violation occurred.
 - (b) Second—Declare the member MPSSAA school ineligible for championship honors for the current school year in the sport in which the violation occurred.
 - (c) Third—Declare the member MPSSAA school on probation for one school year which shall render the school ineligible to compete in any approved State meet or tournament for that year.
 - (d) Fourth—Impose additional penalties as may seem justified in the particular case considered.
- (2) Against a student:
- (a) First—Declare the student to be ineligible for the next 60 school days following the date the student was found to be in violation. These 60 school days will carry over into the next school year if the violation occurs during the second semester.
 - (b) Second—Declare the student to be ineligible to compete in the sport in which the violation occurred during the subsequent season.
 - (c) Third—Impose additional penalties as may seem justified in the particular case considered.
- (3) Against a coach:
- (a) First—Censure.

- (b) Second—Declare the coach ineligible to coach a team for the current school year in the sport in which the violation occurred.
- (c) Third—Declare the coach ineligible to coach a team in any sport for the current year.
- (d) Fourth—Impose additional penalties as may seem justified in the particular case considered.

B. Procedure.

- (1) First—Any member MPSSAA school, student, or coach shall notify the local supervisor of interscholastic athletics and the MPSSAA Executive Director of the alleged violation.
- (2) Second—The superintendent or the superintendent’s designee of the local school system in which the school allegedly in violation is located shall convene a hearing within 5 school days.
- (3) Third—If the superintendent or the superintendent’s designee of the local school system in which the school allegedly in violation is located concludes that a violation has occurred, a penalty shall be imposed in accordance with this regulation.
- (4) Fourth—A report of the hearing and decision in the local school system shall be forwarded to the Executive Director of the MPSSAA.
- (5) Fifth—The MPSSAA Executive Director, in consultation with the appropriate committees, or the Executive Council of the MPSSAA, shall review the report of the local hearing and decision in the local school system. The MPSSAA Executive Director shall either accept the penalty imposed or modify the penalty in accordance with this regulation.

C. Penalties imposed by local school systems for violations of local school system rules adopted in accordance with Regulations .01B and .02 B shall be uniform with the penalties designated in Regulation .05A of this chapter.

D. Appeals.

- (1) A member MPSSAA school, student, or coach may appeal the imposed penalty within 30 days and request a hearing before the Appeals Committee of MPSSAA.
- (2) The Appeals Committee of the MPSSAA serves in a quasi-judicial capacity.
- (3) The membership of the MPSSAA Appeals Committee shall include one representative from each district in the Association and a representative from the Association of Secondary School Principals. Five members will constitute a quorum.
- (4) The MPSSAA Executive Director shall notify the Appeals Committee of the hearing and establish a date, time, and hearing site. The appealing school, student, or coach, or all of the above, shall be notified of the date, site, and time of the hearing.
- (5) The MPSSAA Executive Director or the Executive Director’s designee shall present the case to the Appeals Committee on behalf of the MPSSAA.
- (6) The principal of the involved school, the student, or coach, or all of the above, shall present grounds for appeal. If appropriate, the local school system’s supervisor of interscholastic athletics involved in the appeal may present the case.
- (7) The MPSSAA Appeals Committee shall convene in closed session and vote to deny or uphold the appeal or modify the penalty. A majority vote is required to deny or uphold an appeal or modify the penalty.
- (8) The MPSSAA Appeals Committee shall report its findings to the concerned parties.
- (9) Any party aggrieved by the MPSSAA Appeals Committee decision may appeal the decision to the State Superintendent of Schools within 30 days after receipt of the Appeals Committee decision. The State Superintendent of Schools, upon examination of the facts, may, in his or her discretion, allow the appeal and appoint a special committee of three local superintendents of schools to hear

the appeal. The committee of superintendents may deny or uphold the appeal or modify the penalty.

- (10) Unless otherwise ordered by the State Superintendent of Schools, the application for appeal to the State Superintendent of Schools may not stay the enforcement of the MPSSAA Appeals Committee decision, or excuse the person affected thereby from complying with its terms.
- (11) The decision of the committee of local superintendents of schools is final.
- (12) A member of the MPSSAA Appeals Committee or the committee of local superintendents of schools may not hear an appeal if that member has offered advice, made a recommendation, rendered a decision, or in any other way participated in the case being appealed.

.06 Classification

- A. For the purpose of parity in competition in meets and tournaments **administered by the MPSSAA, member schools shall be divided into classifications** based on enrollment. If, in this calculation, two or more schools with equal enrollments fall between two classifications, they shall be placed in the lower classification.
- B. The local superintendent of schools shall submit to the MPSSAA Executive Director a report on the actual school enrollment of students in Grades 9, 10, and 11 in each of the member MPSSAA schools as of September 30, in each even-numbered year. The MPSSAA Executive Director and Classification Committee shall present a recommendation for classification of member schools **for each MPSSAA-administered sport** to the MPSSAA Board of Control for adoption. Classification shall be determined every 2 years based on the September 30 enrollment of the previous year.
- C. When the MPSSAA Board of Control adopts classifications for member schools, the classifications shall remain in effect for the next 2 school years.
- D. A new member MPSSAA school that opens or a member school whose enrollment is significantly changed by growth or consolidation during the two-year period shall be placed in the proper classification by the Classification Committee. "Significantly changed" means a decrease or an increase in enrollment of more than 25 percent. This new placement shall affect only the involved school and may not affect the classification of other member schools.
- E. When a member MPSSAA school does not have all three grades included in the enrollment figures upon which the classification is based in the even-numbered year, but will have all three grades in the following odd-numbered year when classification becomes effective, the enrollment figure shall include the existing grades and average of the current class sizes applied to each projected grade.

.07 State Tournament Policies

- A. The MPSSAA games or tournament committees representing all of the districts shall administer and supervise tournaments in the various sports at the district, regional, and State level.
- B. All participating schools shall abide by the rules established by each MPSSAA tournament committee.
- C. Although certain aspects of a tournament may vary from year to year, the following basic policies shall be observed by all tournament committees:
 - (1) The tournament may not interfere with local board of education policy.
 - (2) A member MPSSAA school or local school system may decide whether or not to participate in the tournament.
 - (3) A member MPSSAA school shall compete in its classification when the tournament is so structured.
 - (4) Certified and approved officials' organizations shall be assigned games in a fair, equitable, and non-discriminatory manner.
 - (5) All awards and recognition shall conform to Regulation .08.
 - (6) MPSSAA tournament committees shall make every effort to establish game sites to avoid extensive

travel for participating teams.

- (7) All policy and procedure changes for State tournaments shall be subject to the approval of the MPSSAA Executive Council with the Association Tournament Committee serving in an advisory capacity. Emergency decisions on tournament policies and procedures may be made by the MPSSAA Executive Director.
 - (8) When a student is found ineligible during the progress of a tournament, the contest last played shall be forfeited, and the team which was defeated shall take its place.
 - (9) "All-star teams" or best "individual athlete" awards may not be selected from approved tournaments.
 - (10) Sports at the State tournament level shall be governed by approved game rules.
 - (11) If a team or any students participating in a State tournament contest leaves the field of competition before completion of a contest, or fails to continue play when eligible to do so, or is guilty of misconduct detrimental to the tournament, then the team, coach, or students may be suspended from further participation in the current tournament, and from the same tournament in the succeeding year, upon the determination of the tournament committee and the Executive Director.
 - (12) The rules of the MPSSAA do not provide authority to order games replayed. Protests arising from decisions and interpretations by officials during the game will not be considered. Officials' decisions and interpretations are final.
- D. Expansion of any sport to the State level shall be recommended by the State Board of Control of the MPSSAA and approved by the State Superintendent of Schools after consultation with local superintendents of schools.
- E. Tournament rules and procedures established by the MPSSAA may be appealed on behalf of a student, coach, or school by a local superintendent of schools to the State Superintendent of Schools. The appeal shall be adjudicated by a committee of three local superintendents of schools appointed by the State Superintendent of Schools. The decision of the committee shall be final.

.08 Awards and Recognition

- A. Awards may be made as follows:
- (1) A school, school related, or nonprofit group may purchase and present to a student for athletic achievement a school insignia, medal, pin, or similar article;
 - (2) Awards from outside the school may be given to individual athletes or school teams provided the awards are approved by the local superintendent, meet MPSSAA guidelines, and the presentation is made at a school-approved function.
- B. Recognition of student athletes and teams, other than through awards, shall be limited to appreciation banquets approved by the local superintendent.

.09 Sanction Rules

- A. Students or teams representing a member MPSSAA school shall participate only in contests conducted by educationally related organizations.
- B. Member MPSSAA schools may not compete in any contest in any other state if either school's participation violates the regulations or established policies of either state's high school interscholastic athletic authority.
- C. Sanctioning Guidelines
- (1) Sanctioning for Interstate Competition
 - (a) Member MPSSAA schools may not compete in any of the following contests unless the contest has been sanctioned by each of the interested state authorities through the NFHS:

- (i) Any interstate meet in which four or more schools participate;
 - (ii) Any competition involving schools from three or more state athletic associations;
 - (iii) Any interstate two-school contest which is not sponsored by a NFHS state association or a state member school;
 - (iv) Any interstate two-school contest which involves travel outside the United States of America; or
 - (v) Any interstate two-school contest (regardless of distance to be traveled) which is sponsored by an individual or an organization other than a member MPSSAA high school.
- (b) A school or school system that wishes to serve as a host for an interstate contest shall file the appropriate sanction request form prior to the first play date and at least 15 days prior to the event for events within the first two weeks of the season.
 - (c) Schools participating in interstate contests shall use the National Federation contract form furnished by the MPSSAA Executive Director.
 - (d) In all interstate contests, each participating school shall follow the rules of the host state athletic authority.
- (2) Sanctioning for Intrastate Competition
- (a) Member MPSSAA schools may only compete against other member MPSSAA schools or schools approved through the Standards of Competition.
 - (b) Approval of the MPSSAA Executive Director is required for any intercounty contest involving more than three teams and sponsored by a non-member educational institution.
 - (c) The host school shall file the appropriate sanction request form with the MPSSAA Executive Director prior to the first play date and at least 15 days prior to the event for events within the first two weeks of the season.
 - (d) Member MPSSAA schools may host intercounty contests involving only other member MPSSAA schools or schools approved through the Standards of Competition without sanctioning approval.
- (3) MPSSAA Sanction Guidelines. The following criteria shall be met for sanction approval by the MPSSAA:
- (a) The competition may not determine a regional or national championship;
 - (b) The competition is not preliminary to a college or professional game;
 - (c) The competition is sponsored by an educational institution or similar nonprofit organization;
 - (d) Participation in the event is within the United States of America, does not involve loss of instructional time, and complies with the local school system policies and procedures for school-sponsored travel; and
 - (e) All awards shall comply with Regulation .08 of this chapter.

.10 Amateur Rules

- A.** Students who have not used or are not using their athletic skill as players for financial gain, or who have not competed under assumed names as players, shall be considered amateurs. Employment as an instructor, counselor, or official may not be considered a violation.
- B.** Students who have ceased to be amateurs in a particular sport may not represent their school in interscholastic athletics in that sport.
- C.** Students who have lost amateur standing may apply for reinstatement to the MPSSAA Appeals Committee after the lapse of 60 days. The 60 days shall commence with a letter of determination from the

local superintendent of schools.

- D. Students may not lose amateur standing by playing with or against professional players as long as they do not receive pay for their services.
- E. Students shall lose their amateur status in a particular sport if they sign a professional contract in that sport.

.11 Amendments

- A. Proposed written amendments to these regulations may be submitted only by a member MPSSAA school, local superintendent of schools, MPSSAA committee, or the MPSSAA Executive Director. Proposed amendments shall be received by the MPSSAA Executive Director at least 45 days before the annual meeting of the MPSSAA Board of Control.
- B. Upon receipt, proposed amendments shall be referred to the Constitution Committee for appropriate action and recommendation.
- C. Notice of the proposed amendments shall be sent to each member MPSSAA school, local superintendent of schools, and the State Superintendent of Schools at least 15 days before the annual legislative meeting of the MPSSAA.
- D. Ratification of the proposed amendments shall require a majority vote of the delegates present at the annual legislative meeting of the MPSSAA.
- E. Amendments approved by the MPSSAA shall be forwarded to the State Superintendent of Schools who will receive recommendations from local superintendents of schools before the State Superintendent of Schools submits recommendations to the State Board of Education.
- F. The amendments approved by the State Board of Education shall be in effect according to the date established by the Board.

RULES AND INTERPRETATIONS DEFINITIONS

Athletic Schedule	A team's declaration of the official number of contests, sequence, opponents, and tournaments.
Designated Optional Tournaments	In order for a tournament to be considered a Designated Optional Tournament, it must meet the following standards: (a) Participating may not result in the loss of instructional time. (b) Results shall not count towards MPSSAA standings. (c) If a team elects to participate, the team must declare their designated optional tournament prior to the start of the season. (d) The designated optional tournament must conform to the definition of a tournament as stated below.
Double-header	When a team plays two contests or contest with the same team or different teams on the same day.
Intrinsic value	Medals, pins, certificates, plaques, trophies, scholarships, appreciation (clothing, shoes, contracts are prohibited).
Licensed physician	Medical doctor.
Media	Any channel of communication. These forms include electronic (radio, television, webcasting, video streaming, photography) and print (newspaper, magazine, newsletters, internet).
Multi-team	Three or more teams.
Participation	Physical entry into a bonafide school-sanctioned athletic contest.
Practice	Any individual, group, or team gathering that has assembled for the purpose of instruction and/or play.
Returning players	A player who has represented his/her school in that sport.
School-related group	Any organization whose aim is to promote school programs and is under the supervision of the school.
Scrimmage	A practice or modified game involving two or more schools in which no score is reported, no admission is charged, no public report is made, and is purely for instructional purposes.
Sport staff	Each local school system shall determine the staff coaching titles (head, assistant, junior varsity head) in each sport, and the level of team competition in each sport (varsity, junior varsity, freshman).
Statute of Limitations	A time frame of one calendar year from the day of the state championship to investigate state athletic violations.
Tournament	Three or more teams or individuals competing in an elimination, round-robin or mixer (predetermined opponents) structure where a champion is determined.
Week	Monday, 12:00 a.m. through Saturday, 11:59 p.m.

RULES AND INTERPRETATIONS

OUTSIDE PARTICIPATION

.02G(1) “The outside participation shall not conflict with the practice or contests schedule of the school including district, regional, and State championship play unless prior approval has been obtained from the school principal and coach;”

Interpretation: Any factor of a non-school athletic activity that causes a student to miss any portion of a school practice or contest constitutes a conflict.

This would include but is not limited to:

1. Practice
2. Competition
3. Tryouts/qualifying
4. Travel to and from
5. Registration
6. Awards ceremony
7. Etc.

Note: It is expected that high school teams conduct practice for all members or engage in competition every day school is in session during the sports season.

MAXIMUM NUMBER OF CONTESTS PERMITTED DURING A SPORTS SEASON

.03B

Interpretation: The seasonal limitations for each sport refer to one varsity team as well as to any under-squad teams. A school may field only one team that can be classified as “varsity”. The nomenclature of any under-squad, i.e., varsity “B”, junior varsity, freshman, novice, etc., must so designate its non-varsity status. Accordingly, any requirements or qualifying standards to state tournaments can only be satisfied through *varsity competition*.

50% SPORT STAFF

.04B(2)(d) “Teams having more than one coach, emergency coaches may not comprise more than 50 percent of that sport staff.”

Interpretation: The staff of each individual team (Varsity, JV, freshman) represents a separate sport staff.

CARE AND PREVENTION OF ATHLETIC INJURIES

.04B(3) “All coaches shall have completed or be enrolled in a one-credit course in the prevention and care of athletic injuries.”

Interpretation: The following interpretation of that bylaw was agreed upon by formal vote of the MPSSAA Board of Control:

1. The completion of the Care and Prevention Course will be required by August 15, 1989.
2. Coaches beginning employment after August 15, 1989, will have one (1) year to complete the course.
3. Beginning July 1, 2017, in order for coaches to stay relevant with the care and prevention of athletic injuries to students, all coaches are required to recertify utilizing a local school system approved online course within the last five years.
4. The major content areas in the course should be:
 - a. Legal Issues
 - b. Introduction to Injury
 - c. Prevention of Injuries
 - d. First Aid/On Field Management of Injuries
 - e. Life Threatening Injuries
 - f. Ankle Injuries
 - g. Knee Injuries
 - h. Neck, Spine, Pelvis Injuries
 - i. Shoulder Injuries

- j. Arm, Hand Injuries
- 5. Emergency coaches must have completed a Care and Prevention course in the first year of his/her employment.
- 6. Local supervisors will certify that coaches have completed the course.
- 7. COMAR 13A.05.05.09 states one certified person in CPR shall be available on site at all school-sponsored athletic events.
- 8. **All member schools and school systems are required to be in compliance with Maryland House Bill 836 (2022 General Session) effective July 1, 2022.**
 - a. **Each High School shall develop a venue-specific emergency action plan:**
 - i. **for the operation and use of automatic external defibrillators that meets the requirements of Education Article 7-450;**
 - ii. **for heat acclimatization meets the requirements of Education Article 7-450;**
 - iii. **for coordination of care for other emergent injuries, including cervical spinal injury, concussion and closed head injury, major orthopedic injuries, and severe weather for outdoor facilities;**
 - iv. **that is posted at each athletic facility at the school;**
 - v. **that is available on the school's website;**
 - vi. **that is distributed to the member school coaching staff; and**
 - vii. **that is rehearsed in person and interactively by all of the coaching staff of each sport before each of their respective seasons.**
 - b. **Local school systems shall adopt preseason-practice heat acclimatization guidelines consistent with the model policy listed on the MPSSAA health and safety page of www.mpssaa.org. These guidelines include ensuring each school is properly prepared and equipped to initiate cold water immersion for the treatment of exertional heat stroke.**
 - c. **Automatic External Defibrillator (AED) is provided on-site and located within a brief walk from an athletic practice or event. An AED must be freely accessible during all school functions.**
- 9. **All members of the coaching staff are to be trained in the operation and use of an automated external defibrillator, all members are trained in cold water immersion, and a trained member of the coaching staff is present at all athletic practices and events on school property.**

Following is a suggested outline formulated by the MPSSAA Medical Advisory Board (revised April 22, 1998; September 8, 2010; April 17, 2014):

CARE AND PREVENTION OF ATHLETIC INJURIES COURSE OUTLINE

- I. Legal Issues** **Suggested time allocation: 45 mins.**
 - Emergency Plan
 - Knowledge of proper skills, techniques, and protective equipment
 - Laws and MSDE recommended procedures for Heat Acclimatization and Concussions
 - Medical records and documentation
 - Safety
- II. Introduction to Injury** **Suggested time allocation: 1 hr. 30 mins.**
 - Mechanisms of injury
 - Tissue response to injury (mild/moderate/severe)
 - Stages of healing
 - Psychology of injury
 - Psychology of sport

- III. Prevention of Injuries** **Suggested time allocation: 1 hr. 30 mins.**
- Conditioning concepts
 - Alternate training concepts
 - Nutrition
 - Performance enhancing issues
- IV. First Aid/On Field Management of Injuries** **Suggested time allocation: 3 hrs.**
- Concussion Awareness
 - o Signs and Symptoms
 - o Initial Intervention
 - o Evaluation
 - o Return to play decision making
 - Primary/Secondary survey
 - Cuts, blisters, bruises, skin issues
 - Hyperventilation
 - Care of eye, mouth, nose injuries
 - Thermal injuries
 - Choking
 - Hygiene and sanitation (facilities, equipment, supplies)
 - Hot and Cold Treatment (RICE/ICER treatment)
 - Ambulatory assistance
 - Bloodborne pathogens, use of personal protection equipment
 - First Aid kit
 - Principles of taping
- V. Life Threatening Injuries** **Suggested time allocation: 1 hr.**
- Cardiac
 - Head/Brain
 - Spinal
 - Respiratory
 - Circulatory
 - Thoracic/Internal injuries
 - EpiPen
 - Seizure
- VI. Ankle Injuries** **Suggested time allocation: 2 hrs.**
- Anatomy and mechanics of the joint
 - Physical examination
 - Common injuries and causes
 - Rehabilitation – specific exercises and techniques
 - Taping techniques
- VII. Knee Injuries** **Suggested time allocation: 1 hr. 15 mins.**
- Anatomy and mechanics of the joint
 - Physical examination
 - Common injuries and causes
 - Rehabilitation – specific exercises and techniques
- VIII. Neck, Spine, Pelvis Injuries** **Suggested time allocation: 1 hr.**
- Anatomy and mechanics of the joint
 - Physical examination
 - Common injuries and causes
 - Rehabilitation – specific exercises and techniques
- IX. Shoulder Injuries** **Suggested time allocation: 1 hr. 15 mins.**
- Anatomy and mechanics of the joint
 - Physical examination
 - Common injuries and causes
 - Rehabilitation – specific exercises and techniques

X. Arm, Elbow, Hand Injuries

Suggested time allocation: 1 hr. 15 mins.

- Anatomy and mechanics of the joint
- Common injuries and causes
- Rehabilitation – specific exercises and techniques
- Taping techniques

XI. Exit Exam

Suggested time allocation: 30 mins.
TOTAL TIME: 15 Hrs.= 1 credit

ALL-STAR GAMES PER SPORT

.04C(5) “Individual students may participate in all-star games and events, upon completion of their eligibility in the sport in which this participation occurs.”

Interpretation: Eligibility to participate in a specific sport is automatically forfeited following participation in an all-star event for that sport. The regulations only take jurisdictional control over participation related directly to representation of member schools. All-star selections as a result of camps, open tryouts, summer leagues, or any other non-school affiliated recreational athletic participation are not germane to the regulation.

Factors that constitute an All-Star Contest and violate the intent of the rule prohibiting returning players participating in such contests include:

- a. Players were selected to participate in the contest based on their participation as a member of a high school team. e.g. school records, player statistics, or league honors.
- b. Players were contacted through their school or a representative of their school.
- c. The game was advertised as an All-Star Contest or similar wording that would indicate as an All-Star Contest for current high school students; e.g. Underclassman Game.

OUT-OF-SEASON PRACTICE

.04E(1) “Member MPSSAA schools and coaches of member schools shall confine school practices to the seasonal limitations as defined in Regulation .03 of this chapter.”

Interpretation: Any school group or team gathering consisting of three or more players that has assembled for the purpose of drilling or instruction would constitute a violation. School coaching staffs may work with a maximum of two players per day.

.04E(2) “A coach may not coach a team representing the coach’s school beyond the sports season as defined in Regulation .03 of this chapter.”

Interpretation: Any paid or volunteer coach at a member school may coach a non-school team provided the team has no direct affiliation with the school. When coaching non-school teams, including returning school players on non-school teams, the following criteria shall be observed:

- a. The non-school team may not use a name directly connected with the school;
- b. The non-school team may not use school uniforms, equipment or funds;
- c. The non-school team may not use school facilities except as allowed by local school system guidelines;
- d. The non-school team must meet local school system standards of a non-school team; and
- e. The number of returning school players on the non-school team is limited according to the following timeframe.

Timeframe

1. From the start of the fall sports season as defined in Regulation .03, to the last state championship game of the spring season, the outside teams roster does not exceed 80% of the returning

players of what would constitute a starting lineup in that sport OR a modified version thereof. i.e., 7-on-7 football, 3-on-3 basketball, indoor soccer, indoor lacrosse, etc.

SPORT	STARTING LINE UP	LIMIT
Baseball	9	7
Basketball	5	4
Cross Country.....	7	5
Field Hockey	11	8
Football	11	8
Golf	4 State members	3
Gymnastics—Boys	6 events	4
Gymnastics—Girls	4 events	3
Lacrosse Boys.....	10	8
Lacrosse Girls	12	9
Soccer	11	8
Softball	9	7
Swimming	12 events	9
Tennis	8 State events	6
Track & Field	18 events	14
Volleyball	6	4
Wrestling	14	11

2. From the last state championship game of the spring season to the first day of fall practice, the outside team roster is unrestricted on the number of returning players.

Understanding the 80% Rule - Distinguishing local school system programs and non-school Teams.

1. The rule separates the local school system team participating out-of-season from a non-school team through an individual analysis of the characteristics of the non-school team. The characteristics do not allow for more than 80 percent of returning players of what would constitute a starting lineup in that sport or modified version thereof, If the non-school team is coached by a coach of the same school of the returning players.
2. The rule refers to returning players. Returning players are defined on page 31 of the MPSSAA Handbook as, “A player who has represented his/her school in that sport.” Consistent with COMAR, local school systems may provide more restrictive interpretation on this definition, including incoming freshman and transfer students.
3. The language in the rule speaks to “any coach” and “representing the coach’s school.” Swapping different sport coaches from the same school challenges the rule if the teams are operating above 80 percent of what would constitute a starting lineup in that sport or modified version thereof.
4. The language speaks specifically to the characteristics of a single team. Multiple teams coached by coaches from a school in which their characteristics comply with the 80 % rule do not challenge the rule as the individual analysis of each team shows compliance.
5. School systems, who hire coaches that have coached with more than 80 % of returning players between competition seasons may cause a violation. The same criteria that is being applied to all current high school coaches and non-school teams shall apply to the high school team at the start of their competition season to ensure competitive equity between coach and student-athlete opportunities in between seasons.

CAMP RULE

.04G(2), (3) “Member MPSSAA schools, member school coaches, school-related organizations, or individuals may not sponsor or conduct a camp in which students who are returning players are involved or participate. A camp composed of several coaches with their respective teams is a violation of this regulation.”

Interpretation: School-related individuals mean any school employee, volunteer, their relative, and/or agents. Coaches may instruct non-school teams at camps.

NOTE: Alleged violations brought by member schools, students or coaches will be investigated by the local superintendent or his/her designee. Those sponsoring and/or conducting a camp that is under investigation will be required to supply supporting data.

MISCONDUCT DETRIMENTAL TO A TOURNAMENT

.07C (11) “If a team or any students participating in a State tournament contest leaves the field of competition before completion of a contest, or fails to continue play when eligible to do so, or is guilty of misconduct detrimental to the tournament, then the team, coach, or students may be suspended from further participation in the current tournament, and from the same tournament in the succeeding year, upon the determination of the tournament committee and the Executive Director. ”

Interpretation: Ejection from any district, region, or State tournament contest, failure of schools to follow state tournament policies and/or disruptive actions of students, coaches, school supporters, or administrators are considered misconduct detrimental to the tournament. Coaches, players, and bench personnel ejected from these tournament contests are disqualified from the succeeding contest in that tournament year. Additional sanctions such as, but not limited to, state tournament probation, disqualification from state tournaments in succeeding years, or disqualification from additional state tournaments in the same year, could be imposed depending on the circumstances.

STATE CHAMPIONSHIP CRITERIA

.07D “Expansion of any sport to the State level shall be recommended by the State Board of Control of the MPSSAA and approved by the State Superintendent of Schools after consultation with the local superintendents of schools.”

MPSSAA Criteria:

- a. A minimum of 40% of MPSSAA member schools shall participate in the sport program on a varsity level.
- b. Schools shall be prepared to host home school contests on the school site.
- c. A plan of action shall be submitted to the Executive Director 30 days prior to the spring MPSSAA Board of Control meeting and shall include:
 1. Tournament structure
 2. Estimated budget
 3. Historical background
- d. A state tournament shall evolve from district/regional tournaments.

AWARD CRITERIA

.08A(2) “Awards from outside the school may be given to individual athletes or school teams provided the awards are approved by the local superintendent, ***meet MPSSAA guidelines, and the presentation is made at a school approved function.***”

MPSSAA Guidelines: Awards presented by non-school organization(s) to the school and/or athlete, excluding scholarship(s), must display the school name or insignia and team or individual accomplishment. Commercial messages may not be displayed on awards such as articles of clothing, jewelry, luggage, etc.

LOSS OF INSTRUCTIONAL TIME

.09C(3)(d) “Participation in the event is within the USA, does not involve loss of instructional time, and complies with the local school system policies and procedures for school-sponsored travel.”

Interpretation: Events that require out of state travel beyond 300 miles may not involve any loss of school time.

OFFICIALS

Officials for MPSSAA-sponsored athletic contests, both regular and postseason, are to be certified and registered with the MPSSAA office. The MPSSAA coordinator of officials will facilitate this process with all local officials' boards. Registration and certification requirements are as follows:

1. Be at least 18 years of age and a high school graduate.
2. Be a member in good standing with a local MPSSAA-recognized officials' group.
3. Attend an MPSSAA-sponsored rules interpretation clinic for the current year.
4. Pass the National Federation examination (75% is the lowest passing score).
5. Pay the MPSSAA registration fee (Online through the Center for Officials Services).

Rules Interpretation Clinics

An assigned interpreter will produce an online clinic course through the NFHS Learning network site for local officials. The link to the NFHS rule clinic course will be published on the official's page of the MPSSAA.org. A certificate of completion is required of each official and is to be uploaded on the Center of Officials services Dragonfly platform. The rule interpretation clinic course is a certification requirement for officials assigned to MPSSAA contests-both regular season and postseason play. Coaches are strongly encouraged to take the rule clinic course as well.

Officials Associations Serving Member Schools

Baseball

1. Anne Arundel Diamond Baseball Umpires
2. Atlantic Coast Umpires Association
3. Eastern Shore Umpires Association
4. Interstate Baseball Umpires Association
5. Mason-Dixon Approved Umpires Association
6. Metro Baseball Umpires Association
7. Mid Atlantic Umpires Association
8. Northeastern Maryland Officials Association
9. Southern District Umpires Association, Inc.
10. Tri-State Sports Umpires Association
11. Washington County Umpires Association

Basketball

1. AlleGarr Basketball Officials Association
2. Baltimore Board IAABO #23
3. Baltimore Board of Officials for Womens' Sports
4. Baltimore City IAABO #290
5. Bayside Officials Board IAABO #157
6. Delaware Board IAABO #11
7. Delmarva Basketball Officials Association
8. District of Columbia IAABO #12
9. Maryland Basketball Officials Association
10. Mason-Dixon Board IAABO #244 (Carroll)
11. Southern Maryland Board IAABO #134
12. Tuscarora Board IAABO #214 (Frederick)
13. Upper Chesapeake Officials Assoc. IAABO #261
14. Washington County Basketball Officials Assoc.

Field Hockey

1. Anne Arundel County Board of Officials
2. Baltimore Board of Officials for Womens' Sports
3. Central Maryland Officials Association

4. Frederick County Field Hockey Officials Association
5. Lower Eastern Shore Field Hockey Officials Assoc.
6. Maryland Select Officials Association
7. Northern Eastern Shore
8. Tri-County Field Hockey Association
9. Washington Field Hockey Umpires Association

Football

1. Bayside Football Officials Association
2. Champion Officials Group
3. Frederick County Football Officials Association
4. Maryland Board of Football Officials
5. Northeastern Maryland Officials Association
6. Northern Delaware Football Association
7. Potomac Valley Board
8. Washington County Board
9. Washington District Football Officials Association

Lacrosse – Girls

1. Baltimore Board of Officials for Womens' Sports
2. Central Maryland Officials Association
3. Eastern Shore Lacrosse Umpires Association
4. Harford County Lacrosse Officials
5. Lower Bayside Lacrosse Officials Association
6. Maryland Select Officials Association
7. Montgomery County Womens' Lacrosse Officials Association
8. Southern Maryland Womens' Lacrosse Officials Association
9. WLC Officials, LLC

Officials Associations Serving Member Schools

Lacrosse – Boys

1. Bayside Lacrosse Officials Association
2. Champion Officials Group
3. Montgomery County Boys Lacrosse Officials Assoc.
4. Southern Lacrosse Officials Association
5. Washington Area Lacrosse Officials Association
6. Western Maryland Lacrosse Officials Association

Soccer

1. Appalachian Soccer Officials Association
2. Baltimore Board of Officials for Womens' Sports
3. Capital Area Soccer Referee Association
4. Eastern Shore Soccer Officials Association
5. Harford Sports Officials Association
6. Mason - Dixon Soccer Officials
7. Metropolitan Washington Soccer Referees Assoc.
8. Old Line Board of Approved Soccer Officials
9. Potomac Valley Soccer Officials
10. Western Maryland Soccer Officials

Softball

1. Anne Arundel Board of Officials
2. Calvert County Officials Association (CCOA)
3. Cascade Officials Association
4. Charles County Umpires Association
5. Delaware Softball Officials Association
6. Golden Triangle Officials Association
7. Greater Washington Softball Umpires Association
8. Lower Bayside Softball Umpires Association
9. MASO
10. Mid Atlantic Softball Umpires
11. Northern Bayside Umpires Association
12. Northeastern Maryland Officials Association
13. Tri-County Sports Officials Association
14. Tri-State Umpires Association
15. Washington County Umpires Association

Swimming

1. Capital Area Swimming Officials
2. Delaware Swimming & Diving Officials Association
3. Eastern Shore Swimming Officials Association
4. Frederick County Swimming Officials
5. Maryland Officials Club
6. Northeastern Maryland Officials Association

Track and Field/Cross Country

1. Capital Board of Officials
2. Maryland Officials Club
3. Montgomery County Track Officials (MBLOA)
4. Western Maryland Track Officials
5. Potomac Valley Officials Association

Volleyball

1. Allegany - Garrett County Volleyball Officials
2. Baltimore Board of Officials for Womens' Sports
3. Beltway Region Volleyball Officials (BRVO)
4. Capital Area Volleyball Officials Association
5. Central Maryland Volleyball Officials
6. Delaware Volleyball Officials Association
7. Frederick Volleyball Officials
8. Lower Shore Volleyball Officials
9. Northeastern Maryland Officials Association
10. Northern Bayside Volleyball Officials
11. Tri-County Sports Officials Association
12. Washington County Volleyball Officials

Wrestling

1. Eastern Shore Wrestling Officials Association
2. Maryland Wrestling Officials Association
3. Potomac Valley Wrestling Officials Association
4. Washington County Wrestling Officials Association
5. Washington Metropolitan Wrestling Officials Assoc.

MPSSAA RULES INTERPRETERS

	Home/Office	Other
BaseballTom O'Hara	410-344-1801	443-617-7548
BasketballAl Battista	202-455-9037	202-455-9037
Diving.....Steve Bettinger		301-252-7511
Field HockeyLea Kusner	410-323-1782	443-413-7137
FootballJames Byrd	410-294-5257	410-294-5257
Lacrosse-BJim Bateman	717-822-0070	443-604-8628
Lacrosse-GLiz Brush	607-222-8816	607-222-8816
SoccerRoss Burbage	410-848-2846	410-236-5427
SoftballAl Palmer	301-924-2464	301-502-1001
Swimming.....Scott Witkin		301-467-1675
Track & FieldSteve Smith	410-665-7157	410-935-1219
VolleyballEd Tucholski		443-995-7348
WrestlingBruce Malinowski	443-809-5428	410-802-3411

MPSSAA SPORT COMMITTEES

BASEBALL COMMITTEE

Director: Jason Woodward, Sherwood HS

District 1

Mike FranklinCatoctin HS

District 2

Sean DavisSherwood HS

District 3

Donald ClevelandLaurel HS

District 4

Guy Smith, Jr.Huntingtown HS

District 5

Wayne FeuerherdNorth County HS

District 6

Jeff MarkleParkville HS

District 7

Matthew RoselandPatterson Mill HS

District 8

Todd LampmanSnow Hill HS

District 9

Todd HenningACCE

BASKETBALL COMMITTEE (BOYS)

Director: VaShawne Gross, Huntingtown HS

Tournament Director: Dr. Jeffrey Sullivan,

Montgomery County

District 1

Mike MathisWalkersville HS

District 2

Dan HarwoodCol. Zadok Magruder HS

District 3

Brendan O'ConnellEleanor Roosevelt HS

District 4

Dale LamberthThomas Stone HS

District 5

Mike RuddGlen Burnie HS

District 6

Jim RhoadsHereford HS

District 7

Jeroud ClarkPatterson Mill HS

District 8

Shannon WhittingtonWicomico HS

District 9

Herman HarriedLake Clifton HS

BASKETBALL COMMITTEE (GIRLS)

Director: Lynette Mitzel, Baltimore County

Tournament Director: Tiffany Byrd, Baltimore City

District 1

Liz PadgettManchester Valley HS

District 2

Maggie DyerThomas S. Wootton HS

District 3

Ayana Ball-WardLargo HS

District 4

Matthew WoodGreat Mills HS

District 5

Teresa WatersRiver Hill HS

District 6

Lori BrewerCarver Center

District 7

Kathy StoudtRising Sun HS

District 8

Stosh SchtiermanWicomico HS

District 9

Rolynda ConteeCity College HS

CROSS COUNTRY COMMITTEE

Director: Michael Sye, Baltimore County

District 1

Larry O'HaraGov. Thomas Johnson HS

District 2

Chad YoungGaithersburg HS

District 3

Kenneth WashingtonNorthwestern-PG HS

District 4

Jimmy BallNorth Point HS

District 5

Phil LangHoward Co.

District 6

Matthew CleverRandallstown HS

District 7

Steve PizzulliBohemia Manor HS

District 8

TBA

District 9

Keysha FearonForest Park HS

MPSSAA SPORT COMMITTEES

FIELD HOCKEY COMMITTEE Director: Regina Grubb, Poolesville HS

- District 1**
Denean KoontzManchester Valley HS
- District 2**
Melissa O'NeillWatkins Mill
- District 4**
Anne VallandinghamChopticon HS
- District 5**
Heather ArnoldOld Mill HS
- District 6**
Caitlin DuvallHereford HS
- District 7**
Caitlan GartlandBohemia Manor HS
- District 8**
Gina DeanPocomoke ES

FOOTBALL COMMITTEE Director: Ryan Hines, Urbana HS

- District 1**
Kurt SteinOakdale HS
- District 2**
Michael Nesmith.....Paint Branch HS
- District 3**
Thomas GreenEleanor Roosevelt HS
- District 4**
Andy ShattuckNorth Point HS
- District 5**
Brian Van DuesenRiver Hill HS
- District 6**
Reggie WhiteMilford Mill Academy
- District 7**
Todd ShivesBohemia Manor HS
- District 8**
James McCormickNorth Caroline HS
- District 9**
Patrick NixonMergenthaler HS

GOLF COMMITTEE

Director: Eric Michael, Washington County
Tournament Site Director:Phelps Prescott
Arundel HS

- District 1**
Kyle Walker.....Manchester Valley HS
- District 2**
Cliff ElginDamascus HS
- District 3**
Theodore SmithSuitland HS
- District 4**
David Russell.....La Plata HS
- District 5**
Jon Browne.....Oakland Mills HS
- District 6**
Jim BookFranklin HS
- District 7**
Raymond Paquin, IIIPatterson Mill
- District 8**
Brad NieszQueen Anne's HS

MPSSAA SPORT COMMITTEES

INDOOR/OUTDOOR TRACK COMMITTEE

Indoor Director: Clayton Culp,
Anne Arundel County

Outdoor Director: Beth Shook, Westlake HS

District 1

Becky WalterBoonsboro HS
Ronnie BeardOakdale HS

District 2

Beth MuehlWalter Johnson HS
Scott MathiasClarksburg HS

District 3

Bryan BrownCharles H. Flowers HS
Kenneth WashingtonNorthwestern-PG HS

District 4

Kevin ReisingerCentral Office
Josh DawsonNorthern-Calvert HS

District 5

Brianna BosticBroadneck HS
Philip RogersReservoir HS

District 6

Brad Duvall.....Hereford HS
Eric BenjaminPatapsco HS

District 7

Tom DeckerNorth East-C HS
Donnie MickeyC. Milton Wright HS

District 8

Justin HollandKent Island HS
David DodsonWorcester County

District 9

Joseph EdwardsFrederick Douglass HS
Duane DownerBaltimore City College

LACROSSE COMMITTEE (BOYS)

Director: Ken Zorbach, HaCPS-retired

District 1

John Piper.....Manchester Valley HS

District 2

David Heiney Gonzalez.....Quince Orchard HS

District 3

Carlos Pettigrew.....Charles H. Flowers HS

District 4

Peter KirwinHuntingtown HS

District 5

Brendan BraceSouthern-AA HS

District 6

Shaun DowneyChesapeake-BC HS

District 7

Jason BellamyEdgewood HS

District 8

Dennis KeenanEaston HS

District 9

Jason Williams.....Southwestern HS

LACROSSE COMMITTEE (GIRLS)

Director: Kathy Green, Montgomery County

District 1

Shelly BrezickiManchester Valley HS

District 2

Kelly HughesSherwood HS

District 3

John O'Hara.....DuVal HS

District 4

Maggie PikeWindy Hill ES

District 5

Ginger Kincaid.....Howard Co. (retired)

District 6

Todd HawkinsLansdowne HS

District 7

Faye Brust.....C. Milton Wright HS

District 8

Kelsey FitzgeraldSudlerville MS

District 9

Mary HainWestern-B HS

MPSSAA SPORT COMMITTEES

SOCCER COMMITTEE (BOYS) Director: Matt Roberts, Cecil County

- District 1**
Mike TeslaWashington Co. (retired)
- District 2**
Andre WiseDamascus HS
- District 3**
George KallasEleanor Roosevelt HS
- District 4**
Jason CranfordCalvert HS
- District 5**
Sean TettermerBroadneck HS
- District 6**
Peter GlaudemansEastern Technical HS
- District 7**
Christopher HooverFallston HS
- District 8**
Jamie GreenwoodStephen Decatur HS
- District 9**
Jarrett IngramNew Era Academy

SOCCER COMMITTEE (GIRLS) Director: Marianne Shultz, Anne Arundel Co.

- District 1**
Howie PuttermanLinganore HS
- District 2**
Haroot HakopianWinston Churchill HS
- District 3**
Dzar Daniels.....Northwestern HS
- District 4**
Jennifer HendersonLeonardtown HS
- District 5**
Tim DeppenMount Hebron HS
- District 6**
Lisa MartinOwings Mills HS
- District 7**
Lissy DeanBohemia Manor HS
- District 8**
Mike KernQueen Anne's HS
- District 9**
Todd Henning.....ACCE

SOFTBALL COMMITTEE Director: Lynn Pitonzo, AACPS-retired

- District 1**
Steve NibbsFrederick Co. (retired)
- District 2**
Colleen AdamsQuince Orchard HS
- District 3**
Luanne SmithBowie HS
- District 4**
Michael JohnsonHuntingtown HS
- District 5**
Tim WilliamsSouth River HS
- District 6**
Ted WinnerOwings Mills HS
- District 7**
Nicole CosgroveBel Air HS
- District 8**
Kory ShilesMardela HS
- District 9**
Suzanne Blum.....Baltimore City

SWIMMING & DIVING COMMITTEE Director: Kevin Kendro, Frederick County

- District 1**
Sara FranciscovichWalkersville HS
- District 2**
Jason Blanken.....Bethesda-CC HS
- District 3**
John VenitLaurel HS
- District 4**
Penny Michaels.....Spring Ridge MS
- District 5**
Ellen HaysOld Mill HS
- District 7**
Chris BleyMagnolia MS
- District 8**
TBATBA
- District 9**
Cynthia Tucker-TysonCarver Vo-Tech

MPSSAA SPORT COMMITTEES

TENNIS COMMITTEE

Director: Jean Vanderpool, HoCPS-retired

District 1

Shaun WeissOakdale HS

District 2

Judy Rothstein.....Paint Branch HS

District 3

Robert VinsonCharles H. Flowers HS

District 4

Amy TrainerHuntingtown HS

District 5

Chip BolingHoward HS

District 6

Fletcher BurchettKenwood HS

District 7

Lucia Samra.....Patterson Mill HS

District 8

Dennis WhiteNorth Caroline HS

District 9

Zachary PalmerWestern-B HS

VOLLEYBALL COMMITTEE

Director: Sybil Kessinger, River Hill HS
Asst. Tourn. Director: Debbie Basler, HaCPS

District 1

Dan CunninghamNo. Hagerstown HS

District 2

Scott Zanni.....Col. Zadok Magruder HS

District 3

Linda Henson-HubbGwynn Park HS

District 4

Steve CorrellLeonardtwn HS

District 5

Ashley Yuscavage.....Arundel HS

District 6

Denikwa JamesFranklin HS

District 7

Christine McDonoughBel Air HS

District 8

Jennifer PowellEaston HS

District 9

Yolanda SmallWestern-B HS

WRESTLING COMMITTEE

Director: Brian Layman,
Anne Arundel County
Tournament Director:
Michael Duffy, Carroll County
Dual Meet Director:
Dave Dodson, Manchester Valley HS

District 1

Mike RechterovicWilliamsport HS

Jennifer GosselinWinters Mill

District 2

Rob PinskyClarksburg HS

E. Kathy GreenMontgomery Co.

District 3

Odist FelderCharles H. Flowers HS

Cecile GreenfieldOxon Hill

District 4

Rich PauoleLa Plata HS

Jennifer SmithSt. Charles HS

District 5

Troy Stevenson.....Oakland Mills

Chris Dyke.....Old Mill HS

District 6

Gary BurkhardtParkville HS

Jennifer RoweWestern STES

District 7

Craig Reddish.....Bel Air HS

Kim BrownElkton HS

District 8

Tim FreyCaroline Co. (retired)

Beth CarmeanNorth Dorchester HS

District 9

Wavie Gibson,IIIBalto. Polytechnic

MPSSAA Enrollment Numbers 2022-23 (Grades 9-11)

Montgomery Blair-Mtg2477	John F. Kennedy-Mtg1344	Hereford-B Co.....966	Boonsboro-Was673
Walter Johnson-Mtg.....2206	Thomas Johnson-Fre1343	Potomac-PG963	Central-PG655
High Point -PG2185	Howard-How1343	Poolesville-Mtg.....956	Cambridge-SD-Dor653
Northwest-Mtg1979	Great Mills-StM1314	Lansdowne-B Co950	Pikesville-B Co644
Eleanor Roosevelt-PG1979	Woodlawn-B Co1290	New Town-B Co.....941	Patterson Mill-Hfd643
Bowie-PG1923	Col. Zadok Magruder-Mtg1285	Walkersville-Fre941	Edmondson/West-Balt642
Gaithersburg-Mtg.....1900	Watkins Mill-Mtg1282	North Harford-Hfd939	ACCE-Balt632
Western-Balt1890	Chopticon-StM1279	Easton-Tal.....938	Forest Park-Balt629
Parkdale-PG1885	Kenwood-B Co1271	Eastern Technical-B Co932	Perryville-Cec622
Clarksburg-Mtg1856	Tuscarora-Fre1264	Overlea-B Co.....916	Loch Raven-B Co621
Richard Montgomery-Mtg1847	Mt. Hebron-How.....1250	Queen Anne's-Qa914	Frederick Douglass-Balt ..621
Suitland-PG1837	Towson-B Co.....1243	Wicomico-Wic914	Joppatowne-Hfd614
Northwestern (PG)-PG1832	Marriotts Ridge-How1243	Kent Island-Qa910	Mountain Ridge-All.....612
North County-AA1825	Poly-Balt1228	North Caroline-Cin888	Brunswick-Fre.....610
C H Flowers-PG1813	Long Reach-How1221	La Plata-Cha.....885	Lake Clifton-Balt.....577
Duval-PG.....1797	Frederick-Fre1190	Owings Mills-B Co.....879	Smithsburg-Was.....577
Wheaton-Mtg1791	Bel Air-Hfd1184	Westlake-Cha871	Allegany-All573
Old Mill-AA1790	Crofton-AA.....1174	Frederick Douglass -PG ...867	Havre de Grace-Hfd570
Dr. Henry A Wise Jr-PG....1787	River Hill-How.....1154	Middletown-Fre.....861	Catoctin-Fre555
Bethesda-CC-Mtg1719	Aberdeen-Hfd1145	Thomas Stone-Cha850	Benjamin Franklin-Balt549
Winston Churchill-Mtg1703	Digital Harbor-Balt1135	Century-Car844	Reginald Lewis-Balt522
Annapolis-AA1696	South Hagerstown-Was..1128	Sparrows Point-B Co841	Southern (Gar.)-G.....503
Broadneck-AA1689	Northern (Cal.)-Cal.....1118	Parkside-Wic835	Surrattsville-PG503
Meade-AA.....1656	Chesapeake-AA1115	Calvert-Cal834	National Academy-Balt500
Glen Burnie-AA.....1655	Westminster-Car1114	Randallstown-B Co.....831	Fort Hill-All495
Paint Branch-Mtg.....1630	Edgewood-Hfd1111	Friendly-PG826	Bohemia Manor-Cec488
Parkville-B Co1613	City-Balt1102	Elkton-Cec.....824	North Dorchester-Dor469
Quince Orchard-Mtg.....1607	Rockville-Mtg1094	Winters Mill-Car821	Kent County-K454
Bladensburg-PG1577	Franklin-B Co1093	Carver Vo-Tech-Balt818	CMIT North-PG445
Laurel-PG1574	Oxon Hill-PG1088	Patuxent-Cal809	Colonel Richardson-Cin390
Albert Einstein-Mtg1554	St. Charles-Cha1087	Rising Sun-Cec.....804	Green Street Acad-Balt....387
Thomas S. Wootton-Mtg 1504	Atholton-How1085	Gwynn Park-PG798	CMIT South-PG.....360
Northwood-Mtg1497	Centennial-How1081	Southern (AA)-AA796	New Era Academy-Balt355
Perry Hall-B Co.....1482	Linganore-Fre1072	Fairmont Heights-PG795	Northern (Gar.)-G354
Walt Whitman-Mtg1477	Damascus-Mtg.....1065	Carver A&T-B Co.....787	Washington-Som348
Dulaney-B Co1449	Wilde Lake-How1058	Lackey-Cha781	Clear Spring-Was345
Sherwood-Mtg1446	North Hagerstown-Was ..1055	North East (Cecil)-Cec767	Int. School at Largo-PG310
Urbana-Fre1443	J. M. Bennett-Wic1047	McDonough-Cha759	Mardela-Wic303
Dundalk-B Co1415	Patapsco-B Co1046	Chesapeake -B Co757	Coppin Academy-Balt292
South River-AA1411	Oakdale-Fre1040	Southwestern-Balt757	Int. HS at Langley Pk.-PG..265
James Blake-Mtg1397	Manchester Valley-Car ..1038	Harford Tech-Hfd752	Pocomoke-Wor255
Leonardtown-StM1396	Stephen Decatur-Wor1035	Liberty-Car748	Crisfield-Som254
Severna Park-AA1390	Huntingtown-Cal1021	Fallston-Hfd.....747	Snow Hill-Wor254
Seneca Valley-Mtg.....1390	C. Milton Wright-Hfd.....1019	Dunbar-Balt744	College Park Academy-PG 215
Catonsville-B Co.....1387	Northeast (AA)-AA1007	Williamsport-Was741	Ches. Science Point-AA206
North Point-Cha1376	Milford Mill -B Co1006	South Carroll-Car735	Seed School-MD196
Arundel-AA1369	Patterson-Balt995	Crossland-PG721	St. Michaels-Tal186
Mergenthaler-Balt1359	Oakland Mills-How987	Largo-PG712	Hancock-Was103
Reservoir-How1353	Glenelg-How975	Western STES-B Co704	
Springbrook-Mtg1345	Hammond-How.....970	Francis Scott Key-Car680	

MPSSAA Athletic Participation Survey Totals

Year	Male Participants	Female Participants	Total
1977-78	44,508	23,407	67,915
1978-79	45,464	23,699	69,163
1979-80	44,315	22,781	67,096
1980-81	41,269	23,778	65,047
1981-82	45,455	22,613	68,068
1982-83	45,361	26,309	71,670
1983-84	44,938	24,845	69,783
1984-85	46,344	26,790	73,134
1985-86	46,571	28,017	74,588
1986-87	45,240	26,472	71,712
1987-88	42,633	25,695	68,328
1988-89	44,532	27,695	72,227
1989-90	41,839	23,392	65,231
1990-91	41,753	27,476	69,229
1991-92	42,436	26,363	68,799
1992-93	47,042	31,652	78,694
1993-94	45,307	31,266	76,573
1994-95	44,909	31,133	76,042
1995-96	47,912	34,517	82,429
1996-97	50,441	34,070	84,511
1997-98	49,935	38,329	88,264
1998-99	52,036	38,889	90,925
1999-00	53,994	40,214	94,208
2000-01	54,632	40,477	95,109
2001-02	55,346	40,224	95,570
2002-03	55,898	41,358	97,256
2003-04	57,071	40,557	97,628
2004-05	58,311	42,770	101,081
2005-06	60,572	43,830	104,402
2006-07	63,587	46,397	109,984
2007-08	64,674	46,342	111,016
2008-09	64,704	46,398	111,102
2009-10	66,074	47,195	113,269
2010-11	66,262	47,797	114,059
2011-12	65,905	47,803	113,708
2012-13	65,237	48,566	113,803
2013-14	65,172	48,051	113,223
2014-15	64,789	48,256	113,045
2015-16	64,068	48,103	112,171
2016-17	64,184	48,230	112,414
2017-18	63,775	48,531	112,306
2018-19	62,766	48,325	111,091
2019-20*	61,424	45,552	106,976
2020-21*	40,405	30,149	70,554
2021-22	58,106	42,054	100,160

* - Sport season data and participation was limited in certain school systems due to the COVID-19 Pandemic.

Projected State Tournament Dates - 2023-24 Through 2028-29

(All dates are tentative and subject to change)

Fall Sports Championships

<u>Practice Start Dates</u>	<u>Golf</u>	<u>Field Hockey</u>	<u>Volleyball</u>
2023 - Wed. August 9	2023 - October 23-25	2023 - November 11	2023 - November 15-16
2024 - Wed. August 14	2024 - October 28-30	2024 - November 9	2024 - November 16
2025 - Wed. August 13	2025 - October 27-29	2025 - November 8	2025 - November 15
2026 - Wed. August 12	2026 - October 26-28	2026 - November 14	2026 - November 21
2027 - Wed. August 11	2027 - October 25-27	2027 - November 13	2027 - November 20
2028 - Wed. August 9	2028 - October 23-25	2028 - November 11	2028 - November 19
<u>First Play Dates</u>	<u>Cross Country</u>	<u>Soccer</u>	<u>Football</u>
2023 - Fri. September 1	2023 - November 11	2023 - November 16-18	2023 - Nov. 30-Dec. 2
2024 - Fri. September 6	2024 - November 9	2024 - November 14-16	2024 - December 5-7
2025 - Fri. September 5	2025 - November 8	2025 - November 13-15	2025 - December 4-6
2026 - Fri. September 4	2026 - November 14	2026 - November 19-21	2026 - December 3-5
2027 - Fri. September 3	2027 - November 13	2027 - November 18-20	2027 - December 2-4
2028 - Fri. September 1	2028 - November 11	2028 - November 16-18	2028 - Nov. 30-Dec. 2

Winter Sports Championships

<u>Practice Start Dates</u>	<u>Dual Wrestling</u>	<u>Swimming & Diving</u>	<u>Basketball</u>
2023-24 - Wed. Nov. 15	2023-24 - February 10	2023-24 - February 23-24	2023-24 - March 7-9
2024-25 - Fri. Nov. 15	2024-25 - February 15	2024-25 - February 21-22	2024-25 - March 13-15
2025-26 - Sat. Nov. 15	2025-26 - February 14	2025-26 - February 20-21	2025-26 - March 12-14
2026-27 - Sat. Nov. 14	2026-27 - February 13	2026-27 - February 19-20	2026-27 - March 11-13
2027-28 - Mon. Nov. 15	2027-28 - February 12	2027-28 - February 25-26	2027-28 - March 9-11
2028-29 - Wed. Nov. 15	2028-29 - February 10	2028-29 - February 23-24	2028-29 - March 8-10
<u>First Play Dates</u>	<u>Indoor Track</u>	<u>Wrestling</u>	
2023-24 - Tue. Dec. 5	2023-24 - February 19-20	2023-24 - Feb. 29-Mar. 2	
2024-25 - Thu. Dec. 5	2024-25 - February 17-18	2024-25 - March 6-8	
2025-26 - Fri. Dec. 5	2025-26 - February 16-17	2025-26 - March 5-7	
2026-27 - Fri. Dec. 4	2026-27 - February 15-16	2026-27 - March 4-6	
2027-28 - Mon. Dec. 6	2027-28 - February 21-22	2027-28 - March 2-4	
2028-29 - Tue. Dec. 5	2028-29 - February 19-20	2028-29 - Mar 1 - Mar. 2	

Spring Sports Championships

<u>Practice Start Dates</u>	<u>Lacrosse</u>	<u>Baseball</u>	<u>Tennis</u>
2024 - Fri. March 1	2024 - May 21-23	2024 - May 24-25	2024 - May 23-25
2025 - Sat. March 1	2025 - May 20-22	2025 - May 23-24	2025 - May 22-24
2026 - Sat. February 28	2026 - May 19-21	2026 - May 22-23	2026 - May 21-23
2027 - Mon. March 1	2027 - May 25-27	2027 - May 28-29	2027 - May 27-29
2028 - Wed. March 1	2028 - May 23-25	2028 - May 26-27	2028 - May 25-27
2029 - Thu. March 2	2029 - May 22-24	2029 - May 25-26	2029 - May 24-26
<u>First Play Dates</u>	<u>Track & Field</u>	<u>Softball</u>	
2024 - Thu. March 21	2024 - May 23-25	2024 - May 24-25	
2025 - Fri. March 21	2025 - May 22-24	2025 - May 23-24	
2026 - Sat. March 20	2026 - May 21-23	2026 - May 22-23	
2027 - Mon. March 22	2027 - May 27-29	2027 - May 28-29	
2028 - Tue. March 21	2028 - May 25-27	2028 - May 26-27	
2029 - Wed. March 21	2029 - May 24-26	2029 - May 25-26	

MPSSAA 2023-24 QUICK REFERENCE CALENDAR

(All dates are tentative and are subject to change)

Sport	Practice Begins	First Contest	Last Play Date for Seeding	Entry Deadline	Seed-ing/ Org Mtg	Last Play Date	Region Quarter-finals	Region Semi-finals	Region Finals	State QF Region Meets Tourney Comp. Date	State Semi-finals	State Finals
Cross Country	August 9	Sept. 1	—	October 23	Nov. 5	—	—	—	—	Nov. 2	—	Nov. 11
Field Hockey	August 9	Sept. 1	Oct. 21	November 2	Oct. 23	Oct. 25	Oct. 26	Oct. 30	Nov. 1	Nov. 3/4	Nov. 8 & Nov. 9	Nov. 11
Football	August 9	Sept. 1	Oct. 28	November 13	Oct. 30	Nov. 4	—	Nov. 3/4	Nov. 10/11	Nov. 17/18	Nov. 24/25	Nov. 30 - Dec. 2
Golf	August 9	August 9	Oct. 19	October 19	Oct. 20	—	—	—	—	Oct. 19	Oct. 25 & Oct. 26	October 27
Soccer	August 9	Sept. 1	Oct. 21	November 1	Oct. 23	Oct. 24	Oct. 25	Oct. 27/28	Oct. 31	Nov. 3/4	Nov. 10 & Nov. 11	Nov. 16-18
Volleyball	August 9	Sept. 1	Oct. 28	November 9	Oct. 30	Nov. 1	Nov. 2/3	Nov. 6	Nov. 8	Nov. 10/11	Nov. 13	Nov. 15-16
Basketball	Nov. 15	Dec. 5	Feb. 19	Mar. 1 - B Mar. 2 - G	Feb. 20	Feb. 22	Feb. 23 - B Feb. 24 - G	Feb. 26 - B Feb. 27 - G	Feb. 28 - B Feb. 29 - G	Mar. 1-2	Mar. 5-6	March 7-9
Wrestling Duals	Nov. 15	Dec. 5	Feb. 3	—	Feb. 5	Feb. 17	Feb. 8	Feb. 8	Feb. 8	—	February 10	February 10
Indoor Track	Nov. 15	Dec. 5	Entry Deadline	7 days prior to Region	Feb 17	—	—	—	—	Feb 3 - Feb 14	—	February 19, 20
Swimming & Diving	Nov. 15	Dec. 5	Entry Deadline	February 12	Feb 20	—	—	—	—	Feb 15-17	—	Feb 23-24
Wrestling Tournament	Nov. 15	Dec. 5	Feb. 17	—	Feb 25	Feb 17	—	—	—	Feb 23-24	—	Feb. 29. - Mar. 2
Baseball	March 1	March 21	May 6	May 15	May 7	May 8	May 9	May 11	May 14	May 17/18	May 21	May 24, 25
Lacrosse	March 1	March 21	May 4	May 14	May 6	May 7	May 8	May 10	May 13	May 15	May 17/18	May 21-23
Softball	March 1	March 21	May 6	May 16	May 7	May 8	May 9	May 13	May 15	May 17/18	May 21	May 24, 25
Tennis	March 1	March 21	May 13	May 20	May 21	—	—	—	—	May 18	May 24, 25	May 26
Track & Field	March 1	March 21	Entry Deadline	7 days prior to Region	May 19	—	—	—	—	May 14-18	—	May 23, 24, 25

Projected State Tournament Time Lines For 2023-24

(All dates are tentative and are subject to change)

CROSS COUNTRY

Oct. 23Application deadline for Region Meet entry
 Oct. 30Determination of Region Meet qualifiers
 Nov. 2Region Meets
 Nov. 5Organizational Meeting for State Meets
 Nov. 11State Meets

FIELD HOCKEY

Oct. 21Last play date for seeding consideration
 Oct. 23Tournament Seeding
 Oct. 25Last play date
 Oct. 26Region Quarterfinals
 Oct. 30Region Semifinals
 Nov. 1Region Finals
 Nov. 3/4State Quarterfinals
 Nov. 8/9State Semifinals
 Nov. 11State Finals

FOOTBALL

Oct. 28Last play date for seeding consideration
 Nov. 4Last play date
 Oct. 30Postseason Tournament Organizational Meeting
 Nov. 3/4Region Round #1
 Nov. 10/11Region Round #2
 Nov. 17/18State Quarterfinals
 Nov. 24/25State Semifinals
 Nov. 30 - Dec. 2State Finals

GOLF

Oct. 17District Tournament completion date
 Oct. 17State Golf Tournament entry form due
 Oct. 18Organizational Meeting for State Tournament
 Oct. 23/24-25State Tournament

SOCCER

Oct. 21Last play date for seeding consideration
 Oct. 23Tournament Seeding
 Oct. 24Last play date
 Oct. 25Region Quarterfinals
 Oct. 27/28Region Semifinals
 Oct. 31Region Finals
 Nov. 3/4State Quarterfinals
 Nov. 10/11State Semifinals
 Nov. 16-18State Finals

VOLLEYBALL

Oct. 28Last play date for seeding consideration
 Oct. 30Tournament Seeding
 Nov. 1Last play date
 Nov. 2/3Region Quarterfinals
 Nov. 6Region Semifinals
 Nov. 8Region Finals
 Nov. 10/11State Quarterfinals
 Nov. 13State Semifinals
 Nov. 15-16State Finals

BASKETBALL

Feb. 19Last play date for seeding consideration
 Feb. 20Tournament Seeding
 Feb. 22Last play date
 Feb. 23 (B); Feb. 24 (G)Region Quarterfinals
 Feb. 26 (B); Feb. 27 (G)Region Semifinals
 Feb. 28 (B); Feb. 29 (G)Region Finals
 Mar. 1 (B); Mar. 2 (G)State Quarterfinals
 Mar. 5/6State Semifinals
 Mar. 7-9State Finals

INDOOR TRACK

7 Days prior to region meetEntry Deadline
 Feb. 3-Feb. 14Region Meets
 Feb. 17Seeding of State Meets
 Feb. 19-20State Meets

SWIMMING & DIVING

Feb. 15-17Regional Meets
 Feb. 20Seeding of State Meets
 Feb. 23-24State Meets

WRESTLING DUALS

24 hours prior to region tour.Team entry form due
 Feb. 3Last play date for seeding consideration
 Feb. 5Tournament Seeding
 Feb. 6Region First Round and Quarterfinals
 Feb. 8Region Semifinals and Finals
 Feb. 10State Tournament

WRESTLING

Feb. 17Last play date
 Feb. 16/17City, County Conference Tournament
 Feb. 23/24Region Tournament
 Feb. 25Organizational Meeting for State Tournament
 Feb. 29-Mar. 2State Tournament

BASEBALL

May 6Last play date for seeding consideration
 May 7Tournament Seeding
 May 8Last play date
 May 9Region Quarterfinals
 May 11Region Semifinals
 May 14Region Finals
 May 17/18State Quarterfinals
 May 21State Semifinals
 May 24/25State Finals

LACROSSE

May 4Last play date for seeding consideration
 May 6Seeding Meeting
 May 7Last play date
 May 8Region Quarterfinals
 May 10Region Semifinals
 May 13Region Finals
 May 15State Quarterfinals
 May 17/18State Semifinals
 May 21-23State Finals

SOFTBALL

May 6Last play date for seeding consideration
 May 7Seeding Meeting
 May 8Last play date
 May 9Region Quarterfinals
 May 13Region Semifinals
 May 15Region Finals
 May 17/18State Quarterfinals
 May 21State Semifinals
 May 24/25State Finals

TENNIS

May 13Seeding Meeting
 May 20Region tournament completion deadline
 May 23-25State Tournament

TRACK & FIELD

7 days prior to Region MeetEntry Deadline
 4 days prior to Region MeetScratch/Substitution Deadline
 May 14-18Region Meets
 May 19Seeding of State Meets
 May 23-25State Meets

Maryland Public Secondary Schools Athletic Association

Alphabetical Index

<u>SCHOOL</u>	<u>JURISDICTION</u>	<u>NICKNAME</u>	<u>CODE</u>	<u>SCHOOL</u>	<u>JURISDICTION</u>	<u>NICKNAME</u>	<u>CODE</u>
Aberdeen	Harford Co.	Eagles	ABE	Eastern Technical.....	Baltimore Co.....	Mavericks.....	EVT
ACCE	Baltimore City	Eagles	ACC	Easton.....	Talbot Co.	Warriors	EAS
Albert Einstein	Montgomery Co.	Titans.....	AEI	Edgewood	Harford Co.	Rams	EDG
Allegany.....	Allegany Co.	Campers	ALL	Edmondson/Westside	Baltimore City	Red Storm....	EDW
Annapolis	Anne Arundel Co.....	Panthers	ANN	Eleanor Roosevelt	Prince George's Co.	Raiders.....	ELR
Arundel	Anne Arundel Co.....	Wildcats.....	ARU	Elkton	Cecil Co.	Golden Elks ..	ELK
Atholton.....	Howard Co.	Raiders.....	ATH				
				Fairmont Heights	Prince George's Co.	Hornets	FAH
Balt. Polytechnic Institute	Baltimore City	Engineers	BPI	Fallston	Harford Co.	Cougars	FAL
Baltimore City College	Baltimore City	Knights.....	CTY	Forest Park	Baltimore City	Foresters	FPK
Bel Air	Harford Co.	Bobcats	BAR	Fort Hill	Allegany Co.	Sentinels	FTH
Benjamin Franklin	Baltimore City	Bayhawks	BEN	Francis Scott Key	Carroll Co.	Eagles	FSK
Bethesda-Chevy Chase	Montgomery Co.	Barons	BCC	Franklin	Baltimore Co.....	Indians	FRA
Bladensburg.....	Prince George's Co.	Mustangs	BLA	Frederick.....	Frederick Co.	Cadets	FRE
Bohemia Manor	Cecil Co.	Eagles.....	BHM	Frederick Douglass-B.....	Baltimore City	Ducks.....	FDB
Boonsboro	Washington Co.	Warriors.....	BOO	Frederick Douglass-PG	Prince George's Co.	Eagles	FRD
Bowie	Prince George's Co.	Bulldogs	BOW	Friendly	Prince George's Co.	Patriots	FRI
Broadneck	Anne Arundel Co.....	Bruins	BDN				
Brunswick	Frederick Co.	Railroaders ..	BRN	Gaithersburg.....	Montgomery Co.	Trojans	GAI
				Glen Burnie.....	Anne Arundel Co.....	Gophers	GLB
C. Milton Wright	Harford Co.	Mustangs....	CMW	Glenelg	Howard Co.	Gladiators	GLG
Calvert.....	Calvert Co.	Cavaliers.....	CAL	Gov. Thomas Johnson	Frederick Co.	Patriots	GTJ
Cambridge/South Dorch.....	Dorchester Co.....	Vikings	CSD	Great Mills	St. Mary's Co.....	Hornets	GTM
Carver Center for A & T	Baltimore Co.....	Wildcats.....	CVR	Green Street Academy	Baltimore City	Chargers	GSA
Carver Vo-Tech	Baltimore City	Bears	CVT	Gwynn Park.....	Prince George's Co.	Yellow Jackets	GWP
Catoctin.....	Frederick Co.	Cougars	CTT				
Catonsville	Baltimore Co.....	Comets	CAT	Hammond	Howard Co.	Golden Bears	HAM
Centennial	Howard Co.	Eagles	CTN	Hancock	Washington Co.	Panthers	HAN
Central	Prince George's Co.	Falcons	CEN	Harford Technical	Harford Co.	Cobras	HVT
Century	Carroll Co.	Knights.....	CNT	Havre de Grace.....	Harford Co.	Warriors	HDG
Charles H. Flowers	Prince George's Co.	Jaguars	CHF	Henry E. Lackey	Charles Co.	Chargers.....	LAC
Ches. Math & IT - North	Prince George's Co.	Tigers	CMN	Hereford	Baltimore Co.....	Bulls.....	HER
Ches. Math & IT - South.....	Prince George's Co.	Tigers	CMS	High Point	Prince George's Co.	Eagles	HPT
Chesapeake Science Pt.	Anne Arundel Co.....	Tigers	CSP	Howard	Howard Co.	Lions.....	HOW
Chesapeake-AA	Anne Arundel Co.....	Cougars	CHA	Huntingtown	Calvert Co.	Hurricanes ..	HUN
Chesapeake-B	Baltimore Co.....	Bayhawks	CHB				
Chopticon	St. Mary's Co.....	Braves	CHO	International HS at Largo	Prince George's Co.	Sea Turtles	LRI
Clarksburg	Montgomery Co.	Coyotes	CLK	Internatl. HS at Langley Pk ..	Prince George's Co.	Phoenix	LGI
Clear Spring	Washington Co.	Blazers	CLS				
Col. Zadok Magruder	Montgomery Co.	Colonels	CZM	James Hubert Blake.....	Montgomery Co.	Bengals	JHB
College Park Academy	Prince George's Co.	Phoenix	CPA	James M. Bennett	Wicomico Co.....	Clippers	JMB
Colonel Richardson	Caroline Co.	Colonels.....	CLR	John F. Kennedy	Montgomery Co.	Cavaliers.....	JFK
Coppin Academy.....	Baltimore City	Eagles	COA	Joppatowne	Harford Co.	Mariners.....	JOP
Crisfield.....	Somerset Co.	Crabbers	CRI				
Crofton	Anne Arundel Co.....	Cardinals	CRF	Kent County	Kent Co.	Trojans	KTC
Crossland	Prince George's Co.	Cavaliers	CRO	Kent Island	Queen Annes Co.....	Buccaneers....	KTI
				Kenwood.....	Baltimore Co.....	Blue Birds	KEN
Damascus.....	Montgomery Co.	Hornets	DAM				
Digital Harbor	Baltimore City	Rams.....	DGH	La Plata.....	Charles Co.	Warriors	LAP
Dr. Henry A. Wise, Jr.	Prince George's Co.	Pumas	HWI	Lake Clifton.....	Baltimore City	Lakers.....	LCE
Dulaney.....	Baltimore Co.....	Lions	DUL	Lansdowne	Baltimore Co.....	Vikings	LAN
Dundalk	Baltimore Co.....	Owls.....	DUN	Largo	Prince George's Co.	Lions.....	LAR
DuVal.....	Prince George's Co.	Tigers	DUV	Laurel	Prince George's Co.	Spartans	LAU
				Leonardtown.....	St. Mary's Co.....	Raiders.....	LEO

<u>SCHOOL</u>	<u>JURISDICTION</u>	<u>NICKNAME</u>	<u>CODE</u>
Liberty	Carroll Co.	Lions	LIB
Linganore	Frederick Co.	Lancers	LIN
Loch Raven	Baltimore Co.	Raiders.....	LCR
Long Reach.....	Howard Co.	Lightning	LGR
Manchester Valley	Carroll Co.	Mavericks....	MVM
Mardela.....	Wicomico Co.	Warriors	MAR
Marriotts Ridge.....	Howard Co.	Mustangs	MRR
Maurice J. McDonough	Charles Co.	Rams	MDU
Meade.....	Anne Arundel Co.....	Mustangs	MEA
Mergenthaler Vo-Tech	Baltimore City	Mustangs	MVT
Middletown	Frederick Co.	Knights.....	MID
Milford Mill Academy	Baltimore Co.	Millers.....	MLM
Montgomery Blair.....	Montgomery Co.	Blazers	MTB
Mount Hebron	Howard Co.	Vikings.....	MTH
Mountain Ridge	Allegany Co.	Miners	MTR
Natl. Academy Foundation ..	Baltimore City	Eagles	NAF
New Era Academy	Baltimore City	Jaguars	NEB
New Town	Baltimore Co.	Titans	NWT
North Caroline	Caroline Co.	Bulldogs	NCN
North County	Anne Arundel Co.....	Knights.....	NCT
North Dorchester	Dorchester Co.....	Eagles	NDC
North East.....	Cecil Co.	Indians.....	NEC
North Hagerstown	Washington Co.	Hubs	NHG
North Harford	Harford Co.	Hawks	NHF
North Point	Charles Co.	Eagles	NPT
Northeast	Anne Arundel Co.....	Eagles	NEA
Northern-Cal	Calvert Co.	Patriots	NOC
Northern-G	Garrett Co.	Huskies	NOG
Northwest	Montgomery Co.	Jaguars	NWM
Northwestern	Prince George's Co..	Wildcats	NWE
Northwood	Montgomery Co.	Gladiators....	NWD
Oakdale.....	Frederick Co.	Bears	OAD
Oakland Mills	Howard Co.	Scorpions	OAK
Old Mill	Anne Arundel Co.....	Patriots	OLM
Overlea	Baltimore Co.	Falcons.....	OVE
Owings Mills	Baltimore Co.	Eagles	OWM
Oxon Hill	Prince George's Co..	Clippers	OXH
Paint Branch.....	Montgomery Co.	Panthers	PBR
Parkdale	Prince George's Co..	Panthers	PKD
Parkside	Wicomico Co.	Rams	PKS
Parkville	Baltimore Co.	Knights.....	PKV
Patapsco.....	Baltimore Co.	Patriots	PAT
Patterson	Baltimore City	Clippers	PPK
Patterson Mill	Harford Co.	Huskies	PPM
Patuxent	Calvert Co.	Panthers.....	PTX
Paul Laurence Dunbar.....	Baltimore City	Poets	DNB
Perry Hall	Baltimore Co.	Gators	PEH
Perryville	Cecil Co.	Panthers.....	PEV
Pikesville.....	Baltimore Co.	Panthers	PIK
Pocomoke.....	Worcester Co.	Warriors	POC
Poolesville.....	Montgomery Co.	Falcons	POO
Potomac	Prince George's Co..	Wolverines	POT

<u>SCHOOL</u>	<u>JURISDICTION</u>	<u>NICKNAME</u>	<u>CODE</u>
Queen Anne's	Queen Anne's Co.	Lions	QAN
Quince Orchard	Montgomery Co.	Cougars.....	QOR
Randallstown	Baltimore Co.....	Rams	RAN
Reginald Lewis	Baltimore City	Falcons	RGL
Reservoir.....	Howard Co.	'Gators	RES
Richard Montgomery	Montgomery Co.	Rockets	RMT
Rising Sun.....	Cecil Co.	Tigers	RIS
River Hill	Howard Co.	Hawks	RVH
Rockville	Montgomery Co.	Rams	ROC
Saint Charles	Charles Co.	Spartans.....	STC
Saint Michael's.....	Talbot Co.	Saints	STM
Seneca Valley	Montgomery Co.	Screamin' Eagles	SEV
Severna Park	Anne Arundel Co.....	Falcons.....	SEP
Sherwood	Montgomery Co.	Warriors	SHE
Smithsburg.....	Washington Co.	Leopards	SMI
Snow Hill.....	Worcester Co.	Eagles	SNH
South Carroll.....	Carroll Co.	Cavaliers	SCL
South Hagerstown	Washington Co.	Rebels	SHG
South River	Anne Arundel Co.....	Seahawks	SRI
Southern-AA	Anne Arundel Co.....	Bulldogs	SOA
Southern-G	Garrett Co.	Rams	SOG
Southwestern	Baltimore City	Sabres.....	SWE
Sparrows Point	Baltimore Co.....	Pointers	SPP
Springbrook	Montgomery Co.	Blue Devils....	SPB
Stephen Decatur	Worcester Co.	Seahawks	STD
Suitland.....	Prince George's Co..	Rams.....	SUI
Surrattsville	Prince George's Co..	Hornets	SUR
The SEED School	Maryland State	Sabers	SED
Thomas S. Wootton	Montgomery Co.	Patriots	TSW
Thomas Stone	Charles Co.	Cougars	THS
Towson	Baltimore Co.....	Generals	TOW
Tuscarora	Frederick Co.	Titans	TUS
Urbana	Frederick Co.	Hawks	URB
Walkersville	Frederick Co.	Lions	WLK
Walt Whitman	Montgomery Co.	Vikings	WWH
Walter Johnson.....	Montgomery Co.	Wildcats	WAJ
Washington.....	Somerset Co.....	Jaguars	WAS
Watkins Mill	Montgomery Co.	Wolverines ..	WTM
Western.....	Baltimore City	Doves	WEB
Western STES.....	Baltimore Co.....	Wolverines ..	WTE
Westlake	Charles Co.	Wolverines....	WLA
Westminster	Carroll Co.	Owls.....	WES
Wheaton	Montgomery Co.	Knights	WHE
Wicomico	Wicomico Co.....	Indians	WIC
Wilde Lake	Howard Co.	Wildecats	WLD
Williamsport	Washington Co.	Wildcats	WIL
Winston Churchill	Montgomery Co.	Bulldogs	WCH
Winters Mill.....	Carroll Co.	Falcons	WMI
Woodlawn	Baltimore Co.....	Warriors	WOO

MPSSAA SCHOOL DIRECTORY

ALLEGANY COUNTY

OFFICE OF ATHLETICS

Tracey Leonard, Assistant Supervisor
Kim Hotchkiss, Administrative Assistant
108 Washington Street
PO Box 1724
Cumberland, MD 21501-1724
Phone 301-759-2404
(Kim) 301-759-2060

- 1. ALLEGANY**
900 Seton Drive
Cumberland 21502
Principal Heidi Laupret
Ath Dir Tedd Eirich
tedd.eirich@acpsmd.org
School phone (301) 777-8110
AD phone (301) 777-8110
- 2. FORT HILL**
500 Greenway Ave.
Cumberland 21502
Principal Candy Canan
Ath Dir Roy DeVore, Jr.
roy.devorejr@acpsmd.org
School phone (301) 777-2570
AD phone (301) 777-2570
- 3. MOUNTAIN RIDGE**
100 Dr. Nancy S. Grasmick Lane
Frostburg 21532
Principal Danny Carter
Ath Dir David Hobel, Jr.
david.hobeljr@acpsmd.org
School phone (301) 689-3377
AD phone (301) 689-3377

ANNE ARUNDEL COUNTY

OFFICE OF ATHLETICS

Clayton Culp, Coordinator
Brian Layman, Specialist
Kristina Albright, Financial Support
Marianne Shultz, Special Olympics (part-time)
2644 Riva Road
Annapolis 21401
Phone (410) 222-5463

- 1. ANNAPOLIS**
2700 Riva Rd.
Annapolis 21401
Principal Patrick Gelinas
Ath Dir Pete Alvanos
palvanos@aacps.org
School phone (410) 266-5240
AD phone (410) 224-8362

- 2. ARUNDEL**
1001 Annapolis Rd.
Gambrills 21054
Principal Gina Davenport
Ath Dir Ryan Woods
rlwoods@aacps.org
School phone (410) 674-6500
AD phone (410) 674-6500
- 3. BROADNECK**
1265 Green Holly Dr.
Annapolis MD 21401
Principal Rachel Kennelly
Ath Dir Kevin Necessary
knecessary@aacps.org
School phone (410) 757-1300
AD phone (410) 757-3758
- 4. CHESAPEAKE**
4798 Mountain Rd.
Pasadena 21122
Principal John Yore
Ath Dir Chip Snyder
esynder@aacps.org
School phone (410) 255-9600
AD phone (410) 255-9600
- 5. CHESAPEAKE SCIENCE POINT**
7321 Parkway Drive South
Hanover 21076
Principal Dwight Jefferson
Ath Dir Matthew Smith
mesmith4@aacps.org
School phone 443-757-5277
AD phone 443-757-5277
- 6. CROFTON**
2291 Davidsonville Rd.
Gambrills 21054
Principal Kathryn Feuerherd
Ath Dir Jeff Martin
jmartin@aacps.org
School phone (410) 451-5300
AD phone (410) 451-7715
- 7. GLEN BURNIE**
7550 Balt.-Annapolis Blvd.
Glen Burnie 21060
Principal Scott McGuire
Ath Dir Kyle Hines
khines@aacps.org
School phone (410) 761-8950
AD phone (410) 761-8950

MPSSAA SCHOOL DIRECTORY

8. MEADE

1100 Clark Road
Ft. Meade 20755
Principal Dr. Ryan Durr
Ath Dir Jamie Cook
jmcook2@aacps.org
School phone (410) 674-7710
AD phone (410) 672-1369

9. NORTH COUNTY

10 East First Ave.
Glen Burnie 21061-2018
Principal Eric Jefferson
Ath Dir Ryan Aleardi
raleardi@aacps.org
School phone (410) 222-6970
AD phone (410) 222-6970

10. NORTHEAST

1121 Duvall Hwy.
Pasadena 21122
Principal Jason T. Williams
Ath Dir Kenny Miller
kfmiller@aacps.org
School phone (410) 437-6400
AD phone (410) 437-6400

11. OLD MILL

600 Patriot Ln.
Millersville 21108
Principal Alison Mikeska
Ath Dir Edward Carey
ECarey@aacps.org
School phone (410) 969-9010
AD phone (410) 969-9010

12. SEVERNA PARK

60 Robinson Rd.
Severna Park 21146
Principal Patrick Bathras
Ath Dir David Kauffman
DKauffman@aacps.org
School phone (410) 544-0900
AD phone (410) 544-0900

13. SOUTH RIVER

201 Central Ave. East
Edgewater 21037
Principal Stacey M. Smith
Ath Dir Dave Klingel
dklingel@aacps.org
School phone (410) 956-5600
AD phone (410) 956-5600

14. SOUTHERN

4400 Solomons Island Rd.
Harwood 20776
Principal Angela Hopkins
Ath Dir Ray Bowen
rbowen@aacps.org
School phone (410) 867-7100
AD phone (410) 867-7100

BALTIMORE CITY

OFFICE OF ATHLETICS

Tiffany Byrd, Director
Tonisha Montgomery, Coordinator
Tara Seaton, Staff Associate
Brian Vaught, Manager Health & Safety
200 East North Ave.- Rm. 312
Baltimore 21202
Phone (443) 642-3804

1. ACADEMY FOR COLLEGE AND CAREER EXPLORATION (ACCE)

1300 West 36th Street
Baltimore 21211
Principal Nicholas D'Ambrosio
Ath Dir Kortnie Smith
KCSmith@bcps.k12.md.us
School phone (410) 396-7607
AD phone (443) 825-7850

2. BALTIMORE CITY COLLEGE

3220 The Alameda
Baltimore 21218
Principal Cindy Harcum
Ath Dir Rolynda Contee
RAContee@bcps.k12.md.us
School phone (410) 396-6557
AD phone (443) 642-6523

3. BALTIMORE POLYTECHNIC INSTITUTE

1400 West Cold Spring Lane
Baltimore 21209
Principal Jacqueline Williams
Ath Dir Phil Thompson
PMThompson@bcps.k12.md.us
School phone (410) 396-7026
AD phone (410) 396-7023

4. BENJAMIN FRANKLIN AT MASONVILLE COVE

1201 Cambria St.
Baltimore 21225
Principal Chris Battaglia
Ath Dir Richard Jackson
RJackson@bcps.k12.md.us
School phone (410) 396-1373
AD phone (443) 676-3256

MPSSAA SCHOOL DIRECTORY

- 5. CARVER VOCATIONAL-TECHNICAL**
2201 Presstman St.
Baltimore 21216
Principal Shionta Somerville
Ath Dir Regina Breitmeyer
RCBreitmeyer@bcps.k12.md.us
School phone (410) 396-0553
AD phone (443) 564-6037
- 6. COPPIN ACADEMY**
2500 West North Avenue
Baltimore 21216
Principal Aisha Almond
Ath Dir Ulysses Hardy, Jr.
UCHardy@bcps.k12.md.us
School phone (410) 642-5060
AD phone (704) 431-9404
- 7. DIGITAL HARBOR**
1100 Covington St.
Baltimore 21230
Principal Taiisha Swinton-Buck
Ath Dir Vincent Campbell Jr.
VJCampbell@bcps.k12.md.us
School phone (443) 984-1256
AD phone (410) 979-4211
- 8. EDMONDSON-WESTSIDE**
501 Athol Ave.
Baltimore 21229
Principal Karl Perry
Ath Dir Dewitt R. Doss
Drdoss@bcps.k12.md.us
School phone (410) 396-0685
AD phone (410) 430-9147
- 9. FOREST PARK**
3701 Eldorado Avenue
Baltimore 21207
Principal Ninia Mouzone
Ath Dir Jermaine Dunn
jedunn@bcps.k12.md.us
School phone (410) 396-0753
AD phone (614) 207-0143
- 10. FREDERICK DOUGLASS**
2301 Gwynns Falls Pkwy.
Baltimore 21217
Principal Craig Rivers
Ath Dir Joseph Edwards
JMEwards@bcps.k12.md.us
School phone (410) 396-7821, -7823
AD phone (443) 642-6055
- 11. GREEN STREET ACADEMY**
125 N. Hilton Street
Baltimore, MD 21229
Principal Timonthy Gordon
Ath Dir Jason Leonard
JLeonard01@bcps.k12.md.us
School phone (443) 642-2068
AD phone (443) 360-5091
- 12. LAKE CLIFTON**
2555 Harford Road
Baltimore 21213
Principal James Gresham
Ath Dir Herman Harried
HHarried@bcps.k12.md.us
School phone (443) 642-2291
AD phone (410) 396-6642
- 13. MERGENTHALER VOCATIONAL-TECHNICAL**
3500 Hillen Rd.
Baltimore 21218
Principal Tricia Lawrence
Ath Dir Patrick Nixon
PNixon01@bcps.k12.md.us
School phone (410) 396-6496
AD phone (410) 889-2584
- 14. NATIONAL ACADEMY FOUNDATION (NAF)**
504 North Caroline St.
Baltimore 21205
Principal Chevelle Lampkin
Ath Dir Robert Harris
rharris01@bcps.k12.md.us
School phone (443) 836-6054
AD phone (443) 825-8560
- 15. NEW ERA ACADEMY**
2700 Seamon Ave.
Baltimore 21225
Principal Shavon Newkirk
Ath Dir Jarrett Ingram
jingham01@bcps.k12.md.us
School phone (443) 984-2825
AD phone (410) 525-6572
FAX (410) 396-6955
- 16. PATTERSON**
100 Kane St.
Baltimore 21224
Principal Vance Benton
Ath Dir Damon Bomar
DBomar@bcps.k12.md.us
School phone (410) 396-9276
AD phone (410) 396-9274

MPSSAA SCHOOL DIRECTORY

17. PAUL LAURENCE DUNBAR
1400 Orleans St.
Baltimore, MD 21231
Principal Yetunde Reeves
Ath Dir Dana Johnson
DJohnson2@bcps.k12.md.us
School phone (443) 642-4478
AD phone (443) 475-0853

18. REGINALD F. LEWIS
6401 Pioneer Dr.
Baltimore 21214
Principal Shawnette Williams
Ath Dir Tina Queen
TQueen01@bcps.k12.md.us
School phone (410) 545-1746
AD phone (443) 642-5898

19. SOUTHWESTERN MULTI-PLEX
1500 Harlem Ave
Baltimore 21217
Principal Kamala Carnes
Ath Dir Jason Williams
JAWilliams@bcps.k12.md.us
School phone (410) 396-7701
AD phone (410) 396-7701

20. WESTERN
4600 Falls Rd.
Baltimore 21209
Principal Michelle White
Ath Dir Yolanda Small
YJackson@bcps.k12.md.us
School phone (410) 396-7040
AD phone (410) 396-7035

BALTIMORE COUNTY

OFFICE OF ATHLETICS

Michael Sye, Director
Lynette Mitzel, Supervisor
9611 Pulaski Park Drive
Suite 307
Baltimore 21220
Phone 443-809-2328

1. CARVER CENTER FOR ARTS & TECH
938 York Rd.
Towson 21204
Principal Erin O'Toole-Trivas
Ath Dir Lori Brewer
lbrewer@bcps.org
School phone (443) 809-2775
AD phone (443) 809-2546

2. CATONSVILLE
421 Bloomsbury Ave.
Baltimore 21228
Principal Matt Ames
Ath Dir Rich Hambor
rhambor@bcps.org
School phone (443) 809-0808
AD phone (443) 809-0815

3. CHESAPEAKE
1801 Turkey Pt. Rd.
Baltimore 21221
Principal Amy Tyler
Ath Dir Shawn Downey
sdowney2@bcps.org
School phone (443) 809-0100
AD phone (443) 809-6386

4. DULANEY
255 Padonia Rd.
Timonium 21093
Principal Sam Wynkoop
Ath Dir Greg Karpers
gkarpers@bcps.org
School phone (443) 809-7633
AD phone (443) 809-7638

5. DUNDALK
1901 Delvale Ave.
Baltimore 21222
Principal Paul Satterfield
Ath Dir Tim Scherer
tscherer2@bcps.org
School phone (443) 809-7023
AD phone (443) 809-7288

6. EASTERN TECHNICAL
1100 Mace Ave.
Baltimore 21221
Principal Christene Anderson
Ath Dir David Deutsch
ddeutsch@bcps.org
School phone (443) 809-0190
AD phone (443) 809-0201

7. FRANKLIN
12000 Reisterstown Rd.
Reisterstown 21136
Principal Kieran O'connell
Ath Dir Jim Book
jbook@bcps.org
School phone (443) 809-1119
AD phone (443) 809-1126

MPSSAA SCHOOL DIRECTORY

- 8. HEREFORD**
17301 York Rd.
Parkton 21120
Principal Robert Covert
Ath Dir Mike Kalisz
mkalisz@bcps.org
School phone (443) 809-1905
AD phone (443) 809-1910
- 9. KENWOOD**
501 Stemmers Run Rd.
Baltimore 21221
Principal Brian Powell
Ath Dir Tony Ruocco
aruocco@bcps.org
School phone (443) 809-0153
AD phone (443) 809-0145
- 10. LANSDOWNE**
3800 Hollins Ferry Rd.
Baltimore 21227
Principal Allison Seymour
Ath Dir Todd Hawkins
thawkins@bcps.org
School phone (443) 809-1415
AD phone (443) 809-1424
- 11. LOCH RAVEN**
1212 Cowpens Ave.
Towson 21286
Principal Janine Holmes
Ath Dir Michael McEwan
mmcewan@bcps.org
School phone (443) 809-3525
AD phone (443) 809-3543
- 12. MILFORD MILL ACADEMY**
3800 Washington Ave.
Baltimore 21244
Principal Tryalah Shipman
Ath Dir Vanessa Locke
vlocke@bcps.org
School phone (443) 809-0660
AD phone (443) 809-0660
- 13. NEW TOWN**
4931 New Town Blvd.
Owings Mills 21117
Principal James Martin
Ath Dir Preston Waters
pwaters@bcps.org
School phone (443) 809-1614
AD phone (443) 809-1668
- 14. OVERLEA**
5401 Kenwood Ave.
Baltimore 21206
Principal Monica Sample
Ath Dir Bruce Malinowski
bmalinowski@bcps.org
School phone (443) 809-5241
AD phone (443) 809-5428
- 15. OWINGS MILLS**
124 Tollgate Rd.
Owings Mills 21117
Principal Abbey Campbell
Ath Dir Ted Winner
wwinner@bcps.org
School phone (443) 809-1700
AD phone (443) 809-1528
- 16. PARKVILLE**
2600 Putty Hill Ave.
Baltimore 21234
Principal Maureen Astarita
Ath Dir Jeff Markle
jmarkle@bcps.org
School phone (443) 809-5257
AD phone (443) 809-5430
- 17. PATAPSCO**
8100 Wise Ave.
Baltimore 21222
Principal Scott Hobbs
Ath Dir Chris McGuinness
cmcguinness@bcps.org
School phone (443) 809-7060
AD phone (443) 809-7064
- 18. PERRY HALL**
4601 Ebenezer Rd.
Baltimore 21236
Principal Craig Reed
Ath Dir Robert Hruz
rhruz@bcps.org
School phone (443) 809-5108
AD phone (443) 809-8755
- 19. PIKESVILLE**
7621 Labyrinth Rd.
Baltimore 21208
Principal Eric Eiswert
Ath Dir Dana Loverde
dloverde@bcps.org
School phone (443) 809-1217
AD phone (443) 809-1257

MPSSAA SCHOOL DIRECTORY

20. RANDALLSTOWN

4000 Offutt Road
Randallstown 21133
Principal Michael Jones
Ath Dir Matt Clever
mclever@bcps.org
School phone (443) 809-0748
AD phone (443) 809-0756

21. SPARROWS POINT

7400 North Point Rd.
Baltimore 21219
Principal Emily Caster
Ath Dir Paul Latanishen
platanishen@bcps.org
School phone (443) 809-7517
AD phone (443) 809-7512

22. TOWSON

69 Cedar Ave.
Towson 21286
Principal Charlene DiMino
Ath Dir Justin Nash
jnash3@bcps.org
School phone (443) 809-3608
AD phone (443) 809-5319

23. WESTERN SCHOOL OF TECH & ENV SCI

100 Kenwood Ave.
Baltimore 21228
Principal Jewell Ralph
Ath Dir Jen Rowe
jrowe2@bcps.org
School phone (443) 809-0840
AD phone (443) 809-0844

24. WOODLAWN

1801 Woodlawn Dr.
Baltimore 21207
Principal Jamel Jernigan
Ath Dir Michael Foxwell
mfoxwell2@bcps.org
School phone (443) 809-1309
AD phone (443) 809-0724

CALVERT COUNTY

SUPERVISOR OF ATHLETICS

Kevin Hook, J.D.
1305 Dares Beach Road
Prince Frederick 20678
Phone (443) 550-8780

1. CALVERT

520 Fox Run Blvd.
Prince Frederick 20678
Principal Darrel Prioleau
Ath Dir Jason Cranford
cranfordje@calvertnet.k12.md.us
School phone (443) 550-8880
AD phone (443) 550-8912

2. HUNTINGTOWN

4125 Solomons Island Rd.
Huntingtown 20639
Principal Beth Morton
Ath Dir VaShawne Gross
grossv@calvertnet.k12.md.us
School phone (443) 550-8810
AD phone (443) 550-8825

3. NORTHERN

2950 Chaneyville Rd.
Owings 20736
Principal Steven Williams
Ath Dir Stacy Karcesky
karceskys@calvertnet.k12.md.us
School phone (443) 550-8950
AD phone (443) 550-8930

4. PATUXENT

12485 Southern Connector Blvd.
Lusby 20657
Principal Anthony Barone
Ath Dir Keith Powell
powellk@calvertnet.k12.md.us
School phone (443) 550-8840
AD phone (443) 550-8865

CAROLINE COUNTY

SUPERVISOR OF ATHLETICS

Jon Marketto
204 Franklin Street
Denton 21629
Phone (410) 479-1460 X1154

1. COLONEL RICHARDSON

25320 Richardson Rd.
Federalsburg 21632
Principal Nicole Vondenbosch
Ath Dir Brett Ireland
ireland.brett@ccpsstaff.org
School phone (410) 779-3678
AD phone (410) 310-2736

MPSSAA SCHOOL DIRECTORY

2. NORTH CAROLINE

10990 River Rd.
Ridgely 21660
Principal Matthew Spiker
Ath Dir Nash Ireland
ireland.nash@ccpsstaff.org
School phone (410) 479-2332
AD phone (410) 479-2332

CARROLL COUNTY

SUPERVISOR OF ATHLETICS

Michael Duffy
125 North Court St.
Westminster 21157
Phone (410) 751-3059

1. CENTURY

355 Ronsdale Rd.
Sykesville 21784
Principal Brian Booz
Ath Dir Ashley Hoyt
alhoyt@carrollk12.org
School phone (410) 386-4400
AD phone (410) 386-4400

2. FRANCIS SCOTT KEY

3825 Bark Hill Rd.
Union Bridge 21791
Principal Shannon Mobley
Ath Dir Ryan Kimble
rmkimbl@carrollk12.org
School phone (410) 751-3320
AD phone (410) 751-3320

3. LIBERTY

5855 Bartholow Rd.
Sykesville 21784
Principal Kenneth Goncz
Ath Dir Ed Devinent
erdevin@carrollk12.org
School phone (410) 751-3560
AD phone (410) 751-3560

4. MANCHESTER VALLEY

3300 Maple Grove Rd.
Manchester 21102
Principal Joseph Guerra
Ath Dir Liz Padgett
empadg@carrollk12.org
School phone (410) 386-1673
AD phone (410) 386-1673

5. SOUTH CARROLL

1300 West Old Liberty Rd.
Sykesville 21784
Principal Christina Dougherty
Ath Dir Tim Novotny
t_novot@carrollk12.org
School phone (410) 751-3575
AD phone (410) 751-3575

6. WESTMINSTER

1225 Washington Rd.
Westminster 21157
Principal Katie Nefflen
Ath Dir Terry Molloy
tdmollo@carrollk12.org
School phone (410) 751-3630
AD phone (410) 751-3637

7. WINTERS MILL

560 Gorsuch Rd.
Westminster 21157
Principal Michael Brown
Ath Dir Jennifer Gosselin
jlgosse@carrollk12.org
School phone (410) 386-1500
AD phone (410) 386-1500

CECIL COUNTY

COORDINATOR OF ATHLETICS

Amy Sexton
201 Booth St.
Elkton 21921
Phone (410) 996-5496

1. BOHEMIA MANOR

2755 Augustine Herman Hwy.
Chesapeake City 21915
Principal Justin Zimmerman
Ath Dir Bruce Kline
bkline@ccps.org
School phone (410) 885-2075
AD phone (410) 885-2075

2. ELKTON

110 James St.
Elkton 21921
Principal James Leitgeb
Ath Dir Tony Shinnick
ajshinnick@ccps.org
School phone (410) 996-5000
AD phone (410) 996-5000

MPSSAA SCHOOL DIRECTORY

3. NORTH EAST

300 Irishtown Rd.
North East 21901
Principal Dave Dollenger
Ath Dir Gary Brown
gabrown@ccps.org
School phone (410) 996-6200
AD phone (410) 996-6200

4. PERRYVILLE

1696 Perryville Rd.
Perryville 21903
Principal Kimberly Williams
Ath Dir George Rash
grash@ccps.org
School phone (410) 996-6000
AD phone (410) 996-6000

5. RISING SUN

100 Tiger Drive
North East 21901
Principal James Miro
Ath Dir Clem Vaughan
cwvaughan@ccps.org
School phone (410) 658-9115
AD phone (410) 658-9115

CHARLES COUNTY

COORDINATOR OF STUDENT ACTIVITIES

Steve Lee
P.O. Box 2770
5980 Radio Station Rd.
La Plata 20646
Phone (301) 934-7323

1. HENRY E. LACKEY

3000 Chicamuxen Rd.
Indian Head 20640
Principal Kathy Perriello
Ath Dir John Lush
jlush@ccboe.com
School phone (301) 753-1753
AD phone (301) 753-1753 1.

2. LA PLATA

6035 Radio Station Rd.
La Plata 20646
Principal Doug Dolan
Ath Dir Rich Pauole
rpauole@ccboe.com
School phone (301) 753-1754
AD phone (301) 753-1754

3. MAURICE J. MCDONOUGH

7165 Marshall Corner Rd.
Pomfret 20675
Principal Darnell Russell
Ath Dir Pam Thornton-Miller
pthorntonmiller@ccboe.com
School phone (301) 753-1755
AD phone (301) 753-1755

4. NORTH POINT

2500 Davis Rd.
Waldorf 20603
Principal Daniel Kaple
Ath Dir Andrew Shattuck
ashattuck@ccboe.com
School phone (301) 753-1759
AD phone (301) 753-1759

5. ST. CHARLES

5305 Piney Church Rd.
Waldorf 20602
Principal Tammika Little
Ath Dir Jennifer Smith
jsmith@ccboe.com
School phone (301) 753-2090
AD phone (301) 753-2090

6. THOMAS STONE

3785 Leonardtown Rd.
Waldorf 20601
Principal Shanif Pearl
Ath Dir Kevin Heider
kheider@ccboe.com
School phone (301) 753-1756
AD phone (301) 753-1756

7. WESTLAKE

3300 Middletown Rd.
Waldorf 20603
Principal Diane Roberts
Ath Dir Andrew Dutrow (Acting)
adutrow@ccboe.com
School phone (301) 753-1758
AD phone (301) 753-1758 x23

MPSSAA SCHOOL DIRECTORY

DORCHESTER COUNTY

SUPERVISOR OF ATHLETICS

Kirk Howie
700 Glasgow Street
Cambridge 21613
Phone 410-221-1111, x1003

1. CAMBRIDGE-SOUTH DORCHESTER

2475 Cambridge Bypass
Cambridge 21613
Principal Jerome Stover
Ath Dir Stephen Romano
romanos@dcpsmd.org
School phone (410) 221-5200
AD phone (410) 228-9224, x1704

2. NORTH DORCHESTER

5875 Cloverdale Rd.
Hurlock 21643
Principal David P. Stofa
Ath Dir David Morrissette
morrissetted@dcpsmd.org
School phone (410) 943-4511
AD phone (410) 943-4511

FREDERICK COUNTY

SUPERVISOR OF ATHLETICS

Kevin Kendro
191 South East St.
Frederick 21701
Phone 301-696-6845

1. BRUNSWICK

101 Cummings Dr.
Brunswick 21716
Principal Christopher Berry
Ath Dir Mike O'Brien
Michael.O'Brien@fcps.org
School phone (240) 236-8600
AD phone (240) 236-8611

2. CATOCTIN

14745 Sabillasville Rd.
Thurmont 21788
Principal Jennifer Clements
Ath Dir Keith Bruck
keith.bruck@fcps.org
School phone (240) 236-8100
AD phone (240) 236-8090

3. FREDERICK

650 Carroll Pkwy.
Frederick 21701
Principal Dr. David Franceschina
Ath Dir Keivette Hammond
keivette.hammond@fcps.org
School phone (240) 236-7000
AD phone (240) 236-7083

4. GOV. THOMAS JOHNSON

1501 N. Market St.
Frederick 21701
Principal Tracey Kibler
Ath Dir Mike Chavez
michael.chavez@fcps.org
School phone (240) 236-8200
AD phone (240) 236-8233

5. LINGANORE

12013 Old Annapolis Rd.
Frederick 21701
Principal Dr. Michael Dillman
Ath Dir Howie Putterman
Howard.Putterman@fcps.org
School phone (240) 566-9700
AD phone (240) 566-9855

6. MIDDLETOWN

200 Schoolhouse Dr.
Middletown 21769
Principal Bernie Quesada
Ath Dir Kevin Lynott
Kevin.Lynott@fcps.org
School phone (240) 236-7400
AD phone (240) 236-7420

7. OAKDALE

5850 Eaglehead Dr.
Ijamsville 21754
Principal Bill Caulfield
Ath Dir Mark Wolcott
Mark.wolcott@fcps.org
School phone (240) 566-9400
AD phone (240) 566-9432

8. TUSCARORA

5312 Ballenger Creek Pike
Frederick 21703
Principal Lisa Smith
Ath Dir Chris O'Connor
John.OConnor@fcps.org
School phone (240) 236-6400
AD phone (240) 236-6545

MPSSAA SCHOOL DIRECTORY

9. URBANA

3471 Campus Dr.
Ijamsville 21754
Principal Donna Clabaugh
Ath Dir Ryan Hines
richard.hines@fcps.org
School phone (240) 236-7600
AD phone (240) 236-7711

10. WALKERSVILLE

81 Frederick St.
Walkersville 21793
Principal Dr. Stephanie Ware
Ath Dir Sonny Joseph
emmett.joseph@fcps.org
School phone (240) 236-7200
AD phone (240) 236-7255

GARRETT COUNTY

SUPERVISOR OF ATHLETICS

Paul Edwards
40 South Second St.
Oakland 21550-1518
Phone (301) 334-8933

1. NORTHERN

86 Pride Pkwy.
Accident 21520
Principal James H. Maddy
Ath Dir Phil Carr
philip.carr@garrettcountyschools.org
School phone (301) 746-8668
AD phone (301) 746-8668, x2213

2. SOUTHERN

345 Oakland Dr.
Oakland 21550
Principal Ryan Wolf
Ath Dir Matt Redinger
matt.redinger@garrettcountyschools.org
School phone (301) 334-9447
AD phone (301) 334-6994

HARFORD COUNTY

SUPERVISOR OF ATHLETICS

Debbie Basler
102 South Hickory Ave.
Bel Air 21014
Phone (410) 588-5276, -5249

1. ABERDEEN

251 Paradise Rd.
Aberdeen 21001
Principal Michael Quigg
Ath Dir Tim Lindecamp
tim.lindecamp@hcps.org
School phone (410) 273-5500
AD phone (410) 273-5522

2. BEL AIR

100 Heighe St.
Bel Air 21014
Principal Rob Deleva
Ath Dir Craig Reddish
craig.reddish@hcps.org
School phone (410) 638-4600

3. C. MILTON WRIGHT

1301 N. Fountain Green Rd.
Bel Air 21015
Principal Erica Harris
Ath Dir Kaitlyn Larrimore
Kaitlyn.larrimore@hcps.org
School phone (410) 638-4110
AD phone (410) 638-4110

4. EDGEWOOD

2415 Willoughby Beach Rd.
Edgewood 21040
Principal Sandra McMichael
Ath Dir Sarah Friedman
sarah.friedman@hcps.org
School phone (410) 612-1500
AD phone (410) 612-1500

5. FALLSTON

2301 Carrs Mill Rd.
Fallston 21047
Principal Joe Collins
Ath Dir Christopher Hoover
christopher.hoover@hcps.org
School phone (410) 638-4120
AD phone (410) 638-4032

6. HARFORD TECHNICAL

200 Thomas Run Rd.
Bel Air 21015
Principal James Reynolds
Ath Dir Paul Daniele/Kyle Mohr
Paul.Daniele@hcps.org
Kyle.mohr@hcps.org
School phone (410) 638-3804
AD phone (410) 638-3804

MPSSAA SCHOOL DIRECTORY

7. HAVRE DE GRACE
700 Congress Ave.
Havre de Grace 21078
Principal Brad Spence
Ath Dir Heather Crawford
heather.crawford@hcps.org
School phone (410) 939-6600
AD phone (410) 939-6600

8. JOPPATOWNE
555 Joppa Farm Rd.
Joppa 21085
Principal Pamela Zeigler
Ath Dir Jon Stefanides
jon.stefanides@hcps.org
School phone (410) 612-1510
AD phone (410) 612-1510

9. NORTH HARFORD
211 Pylesville Rd.
Pylesville 21132
Principal Bryan Pawlicki
Ath Dir Justin Martinek
justin.martinek@hcps.org
School phone (410) 638-3650
AD phone (410) 638-3699

10. PATTERSON MILL
85 Patterson Mill Rd.
Bel Air 21015
Principal Dr. Sean Abel
Ath Dir Jeroud Clark
jeroud.clark@hcps.org
School phone (410) 638-4640
AD phone (410) 638-4543

HOWARD COUNTY

COORDINATOR OF ATHLETICS

John Davis
10910 Clarksville Pike
Ellicott City 21042
Phone (410) 313-6631

1. ATHOLTON
6520 Freetown Rd.
Columbia 21044
Principal Robert Motley
Ath Dir Michael Senisi
Michael_Senisi@hcpss.org
School phone (410) 313-7065
AD phone (410) 313-7080

2. CENTENNIAL
4300 Centennial Lane
Ellicott City 21042
Principal Cindy Dillon
Ath Dir Jeannie Prevosto
Jeannie_Prevosto@hcpss.org
School phone (410) 313-2856
AD phone (410) 313-2865

3. GLENELG
14025 Burnt Woods Rd.
Glenelg 21737
Principal Shawn Hastings-Hauf
Ath Dir Dan Sageman
Daniel_Sageman@hcpss.org
School phone (410) 313-5528
AD phone (410) 313-5539

4. HAMMOND
8800 Guilford Rd.
Columbia 21046
Principal Ramona Reid
Ath Dir Michael Lerner
Michael_Lerner@hcpss.org
School phone (410) 313-7615
AD phone (410) 313-7605

5. HOWARD
8700 Old Annapolis Rd.
Ellicott City 21043
Principal Nick Novak
Ath Dir Beth DeFrances
Elizabeth_DeFrances@hcpss.org
School phone (410) 313-2867
AD phone (410) 313-2874

6. LONG REACH
6101 Old Dobbin Ln.
Columbia 21045
Principal Adam Eldridge
Ath Dir Joe Thomas
Joseph_Thomas@hcpss.org
School phone (410) 313-7117
AD phone (410) 313-7414

7. MARRIOTTS RIDGE
12100 Woodford Drive
Marriottsville 21104
Principal John DiPaula
Ath Dir Christopher Reagle
Christopher_Reagle@hcpss.org
School phone (410) 313-5568
AD phone (410) 313-5421

MPSSAA SCHOOL DIRECTORY

8. MOUNT HEBRON

9440 Old Frederick Rd.
Ellicott City 21042
Principal Joelle Miller
Ath Dir Brian Rau
Brian_Rau@hcpss.org
School phone (410) 313-2880
AD phone (410) 313-2885

9. OAKLAND MILLS

9410 Kilimanjaro Rd.
Columbia 21045
Principal Jeffery Fink
Ath Dir Troy Stevenson
Troy_Stevenson@hcpss.org
School phone (410) 313-6945
AD phone (410) 313-6953

10. RESERVOIR

11550 Scaggsville Rd.
Fulton 20759
Principal Karim Shortridge
Ath Dir Marcus Lewis
marcus_lewis@hcpss.org
School phone (410) 888-8850
AD phone (410) 888-8853

11. RIVER HILL

12101 Clarksville Pike
Clarksville 21029
Principal Mikaela Lidgard
Ath Dir James Creighton
James_creighton@hcpss.org
School phone (410) 313-7120
AD phone (410) 313-7114

12. WILDE LAKE

5460 Trumpeter Rd.
Columbia 21044
Principal Marcy Leonard
Ath Dir Earin Saunders
earin_saunders@hcpss.org
School phone (410) 313-6965
AD phone (410) 313-6973

KENT COUNTY

SUPERVISOR OF ATHLETICS

Kevin Taylor - Kent Co. HS
25301 Lambs Meadow Rd.
Worton 21678
Phone (410) 778-1394

1. KENT COUNTY

25301 Lambs Meadow Rd.
Worton 21678
Principal Kris Hemstetter
Ath Dir Kevin Taylor
ktaylor@kent.k12.md.us
School phone (410) 778-4540
AD phone (410) 778-1394

MONTGOMERY COUNTY

OFFICE OF ATHLETICS

Dr. Jeffrey Sullivan, Director
E. Kathy Green, Specialist
Anne Rossiter, Compliance Specialist
850 Hungerford Dr., Rm. 174
Rockville 20850
Phone (240) 740-5650

1. ALBERT EINSTEIN

11135 Newport Mill Rd.
Kensington 20895
Principal Mark Brown
Ath Dir Jermaine Howell
Jermaine_A_Howell@mcpsmd.org
School phone (240) 740-2700
AD phone (240) 740-2680

2. BETHESDA-CHEVY CHASE

4301 East-West Hwy.
Bethesda 20814
Principal Dr. Shelton L. Mooney
Ath Dir Michael Krawczel
Michael_R_Krawczel@mcpsmd.org
School phone (240) 740-0400
AD phone (240) 740-0444

3. CLARKSBURG

22500 Wims Rd.
Clarksburg 20871
Principal Edward K. Owusu
Ath Dir Ed Dalton
Edward_R_Dalton@mcpsmd.org
School phone (240) 740-6000
AD phone (240) 740-6015

4. COL. ZADOK MAGRUDER

5939 Muncaster Mill Rd.
Rockville 20855
Principal Dr. Leroy C. Evans
Ath Dir Silas Cheung
Silas_P_Cheung@mcpsmd.org
School phone (240) 740-5550
AD phone (240) 740-5580

MPSSAA SCHOOL DIRECTORY

- 5. DAMASCUS**
25921 Ridge Rd.
Damascus 20872
Principal Kevin D. Yates
Ath Dir Cliff Elgin
Clifford_A_Elgin@mcpsmd.org
School phone (240) 207-2400
AD phone (240) 207-2388
- 6. GAITHERSBURG**
101 Education Blvd.
Gaithersburg 20877
Principal Cary D. Dimmick
Ath Dir Will Gant
William_C_Gant@mcpsmd.org
School phone (301) 284-4500
AD phone (301) 284-4545
- 7. JAMES HUBERT BLAKE**
300 Norwood Rd.
Silver Spring 20905
Principal Robert Sinclair, Jr.
Ath Dir Jared Fribush
Jared_B_Fribush@mcpsmd.org
School phone (240) 740-1400
AD phone (240) 740-1350
- 8. JOHN F. KENNEDY**
1901 Randolph Rd.
Silver Spring 20902
Principal Dr. Joe L. Rubens, Jr.
Ath Dir Amanda Twele
Amanda_L_Twele@mcpsmd.org
School phone (240) 740-0100
AD phone (240) 740-0120
- 9. MONTGOMERY BLAIR**
51 University Blvd. East
Silver Spring 20901
Principal Renay C. Johnson
Ath Dir Rita Boulé
Rita_J_Boule@mcpsmd.org
School phone (240) 740-7200
AD phone (240) 740-0120
- 10. NORTHWEST**
13501 Richter Farm Rd.
Germantown 20874
Principal Scott Smith
Ath Dir Jody Tyler
Jody_D_Tyler@mcpsmd.org
School phone (240) 740-7100
AD phone (240) 740-7096
- 11. NORTHWOOD**
919 University Blvd. W
Silver Spring 20901
Principal Dr. Jonathan Garrick
Ath Dir Marco Fuggitti
Marco_G_Fuggitti@mcpsmd.org
School phone (240) 740-6950
AD phone (240) 740-6981
- 12. PAINT BRANCH**
14121 Old Columbia Pike
Burtonsville 20866
Principal Dr. Afie Mirshah-Nayar
Ath Dir Heather Podosek
Heather_A_Podosek@mcpsmd.org
School phone (301) 388-9900
AD phone (301) 388-9916
- 13. POOLESVILLE**
17501 West Willard Rd.
Poolesville 20837
Principal Mark A. Carothers
Ath Dir Gina Grubb
Regina_R_Grubb@mcpsmd.org
School phone (240) 740-2400
AD phone (240) 740-2440
- 14. QUINCE ORCHARD**
15800 Quince Orchard Rd.
Gaithersburg 20878
Principal Elizabeth L. Thomas
Ath Dir Jeffrey Rabberman
Jeffrey_L_Rabberman@mcpsmd.org
School phone (240) 740-3600
AD phone (240) 740-3595
- 15. RICHARD MONTGOMERY**
250 Richard Montgomery Dr.
Rockville 20852
Principal Alicia Deeny
Ath Dir Dan Whitlow
Daniel_L_whitlowII@mcpsmd.org
School phone (240) 740-6100
AD phone (240) 740-6150
- 16. ROCKVILLE**
2100 Baltimore Rd.
Rockville 20851
Principal Rhoshanda Pyles
Ath Dir Michael Hayes
Michael_S_Hayes@mcpsmd.org
School phone (240) 740-6610
AD phone (240) 740-6611

MPSSAA SCHOOL DIRECTORY

17. SENECA VALLEY

19401 Crystal Rock Dr.
Germantown 20874
Principal Dr. Marc J. Cohen
Ath Dir Jesse Irvin
Jesse_A_Irvin@mcpsmd.org
School phone (240) 740-6400
AD phone (240) 740-6415

18. SHERWOOD

300 Olney-Sandy Spring Rd.
Sandy Spring 20860
Principal Mr. Timothy D. Britton
Ath Dir Jason Woodward
Jason_D_Woodward@mcpsmd.org
School phone (301) 924-3200
AD phone (301) 924-3230

19. SPRINGBROOK

201 Valleybrook Dr.
Silver Spring 20904
Principal Stephanie Valentine
Ath Dir Dan Feher
Daniel_Feher@mcpsmd.org
School phone (240) 740-3800
AD phone (240) 740-3737

20. THOMAS S. WOOTTON

2100 Wootton Pky.
Rockville 20850
Principal Douglas Nelsen
Ath Dir Al Lightsey
Alton_L_Lightsey@mcpsmd.org
School phone (240) 740-1500
AD phone (240) 740-1525

21. WALT WHITMAN

7100 Whittier Blvd.
Bethesda 20817
Principal Dr. Robert W. Dodd
Ath Dir Andy Wetzel
Andrew_R_Wetzel@mcpsmd.org
School phone (240) 740-4800
AD phone (240) 740-4840

22. WALTER JOHNSON

6400 Rock Spring Dr.
Bethesda 20814
Principal Jennifer A. Baker
Ath Dir Tom Rogers
Thomas_W_Rogers@mcpsmd.org
School phone (240) 740-6900
AD phone (240) 740-6880

23. WATKINS MILL

10301 Apple Ridge Rd.
Gaithersburg 20879
Principal Carol L. Goddard
Ath Dir Lisa Magness
Lisa_Magness@mcpsmd.org
School phone (301) 284-4400
AD phone (301) 284-4480

24. WHEATON

12401 Dalewood Dr.
Silver Spring 20906
Principal Dr. Joshua Munsey
Ath Dir Bryan Walker
Bryan_K_Walker@mcpsmd.org
School phone (301) 321-3400
AD phone (301) 321-3393

25. WINSTON CHURCHILL

11300 Gainsborough Rd.
Potomac 20854
Principal John Taylor
Ath Dir Jesse Smith
Jesse_R_Smith@mcpsmd.org
School phone (240) 740-5400
AD phone (240) 740-5415

PRINCE GEORGE'S COUNTY

OFFICE OF ATHLETICS

Shirley Diggs, Coordinating Supervisor
George McClure, Supervisor
4400 Shell Street
Capitol Heights 20743
Phone (301) 669-6050

1. BLADENSBURG

4200 57th Avenue
Bladensburg 20710
Principal Lisa Faulkner-Jones
Ath Dir Bryan Trueblood
bryan.trueblood@pgcps.org
School phone (301) 887-6700
AD phone (301) 887-6700, x80280

2. BOWIE

15200 Annapolis Rd.
Bowie 20715
Principal Joseph Kautzer
Ath Dir TBA
TBA@pgcps.org
School phone (301) 805-2600
AD phone TBA

MPSSAA SCHOOL DIRECTORY

- 3. CENTRAL**
7001 Beltz Drive (temporary)
District Heights 20747
Principal Sheree Savoy
Ath Dir Larry Ward
larry2.ward@pgcps.org
School phone (301) 499-7080
AD phone (443) 580-3703
- 4. CHARLES H. FLOWERS**
10001 Ardwick-Ardmore Rd.
Springdale 20774
Principal Gorman Brown
Ath Dir Carlyle Rose
carlyle.rose@pgcps.org
School phone (301) 636-8000
AD phone (301) 636-8000 x286
- 5. CHESAPEAKE MATH & IT ACAD. - NORTH**
6100 Frost Place
Laurel 20708
Principal Gonul Ozturk
Ath Dir Thomas Dunn
thomas.dunn@pgcps.org
School phone (301) 350-6051
AD phone (301) 350-6051
- 6. CHESAPEAKE MATH & IT ACAD. - SOUTH**
9822 Fallard Court
Upper Marlboro 20772
Principal Darrian Border-McCarter
Ath Dir Kelvin Smith
kelvin2.smith@pgcps.org
School phone (240) 573-7250
AD phone (240) 573-7250
- 7. COLLEGE PARK ACADEMY**
5751 Rivertech Court
Riverdale 20737
Principal Gordon Libby
Ath Dir Juan foreman
juan2.foreman@pgcps.org
School phone (240) 696-3206
AD phone (240) 696-3206
- 8. CROSSLAND**
6901 Temple Hills Rd.
Temple Hills 20748
Principal Michael Gilchrist
Ath Dir Eric Knight
eric.knight@pgcps.org
School phone (301) 449-4800
AD phone (301) 449-4790
- 9. DR. HENRY A. WISE, JR.**
12650 Brooke Ln.
Upper Marlboro 20772
Principal Taryn Washington
Ath Dir Jason Gordon
jason.gordon@pgcps.org
School phone (301) 780-2100
AD phone (301) 780-2100, x81791
- 10. DUVAL**
9880 Good Luck Rd.
Lanham 20706
Principal Pam Smith
Ath Dir Robert Langway
robert.langway@pgcps.org
School phone (301) 918-8600
AD phone (301) 918-8607
- 11. ELEANOR ROOSEVELT**
7601 Hanover Pkwy.
Greenbelt 20770
Principal Dr. Portia Barnes
Ath Dir Thomas Green
thomas.green@pgcps.org
School phone (301) 513-5400
AD phone (301) 513-5312
- 12. FAIRMONT HEIGHTS**
1401 Nye St.
Capitol Heights 20743
Principal Lonice Priester
Ath Dir George McDaniels
George.McDaniels@pgcps.org
School phone (301) 925-1360
AD phone (301) 925-1360 x272
- 13. FREDERICK DOUGLASS**
8000 Croom Rd.
Upper Marlboro 20772
Principal Eddie Scott
Ath Dir Julius Pinkney
julius.pinkney@pgcps.org
School phone (301) 952-2400
AD phone (301) 952-7737
- 14. FRIENDLY**
10000 Allentown Road
Fort Washington 20744
Principal Robin Pope-Brown
Ath Dir Makia Staves
makia.staves@pgcps.org
School phone (301) 449-4900
AD phone (301) 265-7951

MPSSAA SCHOOL DIRECTORY

15. GWYNN PARK

13800 Brandywine Road
Brandywine 20613
Principal Melissa McGuire
Ath Dir Linda Henson-Hubb
linda.hensonhubb@pgcps.org
School phone (301) 372-0140
AD phone (301) 372-0140 x241

16. HIGH POINT

3601 Powder Mill Road
Beltsville 20705
Principal Dr. Lori Taylor
Ath Dir Edward Lewis
edward.lewis@pgcps.org
School phone (301) 572-6400
AD phone (301) 572-6156

17. INTERNATIONAL HS AT LANGLEY PARK

5150 Annapolis Road
Bladensburg 20710
Principal Dr. Eunice Humphrey
Ath Dir Tiffani Sheppard
tiffani.sheppard@pgcps.org
School phone (301) 702-3910
AD phone (301) 702-3910

18. INTERNATIONAL HS AT LARGO

505 Largo Rd.
Upper Marlboro 20772
Principal Alison Hanks-Sloan
Ath Dir Jonathan George
Jonathan.george@pgcps.org
School phone (301) 702-3810
AD phone (301) 702-3810

19. LARGO

505 Largo Rd.
Upper Marlboro 20772
Principal Albert T. Lewis
Ath Dir Ayana Ball-Ward
ayana.ball@pgcps.org
School phone (301) 808-8880
AD phone (301) 808-8880 x235

20. LAUREL

8000 Cherry Lane
Laurel 20707
Principal Michael Dinkins
Ath Dir Donald Cleveland
donald.cleveland@pgcps.org
School phone (301) 497-2050
AD phone (301) 497-2078

21. NORTHWESTERN

7000 Adelphi Rd.
Hyattsville 20782
Principal Carlene Murry
Ath Dir Terri Dendy
terri.dendy@pgcps.org
School phone (301) 985-1820
AD phone (301) 985-1735

22. OXON HILL

6701 Leyte Dr.
Oxon Hill 20745
Principal Ms. Mar-C Holland
Ath Dir Cecille Greenfield
cecille.greenfield@pgcps.org
School phone (301) 749-4300
AD phone (703) 634-8081

23. PARKDALE

6001 Good Luck Rd.
Riverdale 20737
Principal Dr. Tasha Graves-Henderson
Ath Dir Brian Moore
brian.moore@pgcps.org
School phone (301) 513-5700
AD phone (301) 513-5700 x85189

24. POTOMAC

5211 Boydell Ave.
Oxon Hill 20745
Principal Nathaniel Laney
Ath Dir Irvin Hay
irvin.hay@pgcps.org
School phone (301) 702-3900
AD phone (301) 702-3900 x2006

25. SUITLAND

5200 Silver Hill Rd.
District Heights 20747
Principal Ronald Hollis
Ath Dir Dr. Tonya Manago
Tonya.manago@pgcps.org
School phone (301) 817-0330
AD phone (301) 817-0330

26. SURRATTSVILLE

6101 Garden Dr.
Clinton 20735
Principal Katrina Lamont
Ath Dir Demario Newman
demarie.newman@pgcps.org
School phone (301) 599-2453
AD phone (301) 297-7615

MPSSAA SCHOOL DIRECTORY

QUEEN ANNE'S COUNTY

CHIEF OPERATING OFFICER

Sidney Pinder
202 Chesterfield Avenue
Centreville 21617
Phone (410) 758-2403

1. KENT ISLAND

900 Love Point Road
Stevensville 21666
Principal Sean Kenna
Ath Dir Daniel Harding
daniel.harding@qacps.org
School phone (410) 604-2070
AD phone (410) 604-2070 X4021

2. QUEEN ANNE'S

125 Ruthsburg Road
Centreville 21617
Principal John Schrecongost
Ath Dir Kwandrey Wilson
kwandrey.wilson@qacps.org
School phone (410) 758-0500
AD phone (410) 758-0558

ST. MARY'S COUNTY

DIRECTOR OF ATHLETICS

Michael A. Watson
27190 Point Lookout Road
Loveville 20656
Phone (301) 475-4256, x34143

1. CHOPTICON

25390 Colton Point Rd.
Morganza 20660
Principal Marc A. Pirner
Ath Dir Raymond M. Sapp
rmsapp@smcps.org
School phone (301) 475-0215
AD phone (301) 475-0215 x38135

2. GREAT MILLS

21130 Great Mills Rd.
Great Mills 20634
Principal BeeJay Dothard
Ath Dir Ryan Hanley
rmhanley@smcps.org
School phone (301) 863-4001
AD phone (301) 863-4001 x18135

3. LEONARDTOWN

23995 Point Lookout Rd.
Leonardtown 20650
Principal Jill Snyder-Mills
Ath Dir Bruce Henderson
rbhenderson@smcps.org
School phone (301) 475-0200
AD phone (301) 475-0200 x27135

SOMERSET COUNTY

SUPERVISOR OF ATHLETICS

Cortney Monar
7994 Tawes Campus Drive
Westover 21871
Phone (410) 651-2285

1. CRISFIELD

210 N. Somerset Ave.
Crisfield 21817
Principal Jeff Hale
Ath Dir Greg Bozman
gbozman@somerset.k12.md.us
School phone (410) 968-0150
AD phone (410) 651-2285

2. WASHINGTON

10902 Old Princess Anne Rd.
Princess Anne 21853
Principal Tony Bevilacque
Ath Dir Greg Bozman
gbozman@somerset.k12.md.us
School phone (410) 651-0480
AD phone (410) 651-2285

TALBOT COUNTY

SUPERVISOR OF ATHLETICS

Kurisha Hoffman
723 Mecklenburg Ave.
Easton 21601
AD phone (410) 822-4180

1. EASTON

723 Mecklenburg Ave.
Easton 21601
Principal Sherry Spurry
Ath Dir Kurisha Hoffman
khoffman@talbotschools.org
School phone (410) 822-4180
AD phone (410) 822-4180

MPSSAA SCHOOL DIRECTORY

2. SAINT MICHAELS

200 Seymour Ave.
St. Michaels 21663
Principal Theresa Vener
Ath Dir Brian Femi
bfemi@talbotschools.org
School phone (410) 745-2852
AD phone (410) 745-2852

WASHINGTON COUNTY

SUPERVISOR OF ATHLETICS

Eric Michael
10435 Downsville Pike
Hagerstown 21740
Phone (301) 766-2929

1. BOONSBORO

10 Campus Ave.
Boonsboro 21713
Principal Dr. Michael Kuhaneck
Ath Dir Susan Lowery
lowersus@wcps.k12.md.us
School phone (301) 766-8022
AD phone (301) 766-8028
FAX (301) 432-2269

2. CLEAR SPRING

12630 Broadfording Rd.
Clear Spring 21722
Principal Amanda Mulledy
Ath Dir Ben Copenhaver
copenben@wcps.k12.md.us
School phone (301) 766-8082
AD phone (301) 766-8083

3. HANCOCK MIDDLE/HIGH

289 West Main St.
Hancock 21750
Principal Jennifer Ruppenthal
Ath Dir Kermit Moyer
moyerker@wcps.k12.md.us
School phone (301) 766-8186
AD phone (301) 766-8193

4. NORTH HAGERSTOWN

1200 Pennsylvania Ave.
Hagerstown 21742
Principal Dr. Mike Chilcutt
Ath Dir Dan Cunningham
cunnidan@wcps.k12.md.us
School phone (301) 766-8238
AD phone (301) 766-8246

5. SMITHSBURG

66 N. Main St.
Smithsburg 21783
Principal Tim Eskridge
Ath Dir Ryan Myers
myersrya@wcps.k12.md.us
School phone (301) 766-8337
AD phone (301) 766-8340

6. SOUTH HAGERSTOWN

1101 S. Potomac St.
Hagerstown 21740
Principal Rodney Gayman
Ath Dir Dwayne Freeman
freemdwa@wcps.k12.md.us
School phone (301) 766-8369
AD phone (301) 766-8377

7. WILLIAMSPORT

5 S. Clifton Dr.
Williamsport 21795
Principal Scott Noll
Ath Dir Emily Crabtree
crabtemi@wcps.k12.md.us
School phone (301) 766-8423
AD phone (301) 766-8424

WICOMICO COUNTY

SUPERVISOR OF ATHLETICS

Bryan D. Ashby
Stosh Schtierman (AD Liaison)
1015 Beaglin Park Drive
Salisbury 21801
Phone (410) 677-5144

1. JAMES M. BENNETT

300 East College Ave.
Salisbury 21804
Principal Christel Savage
VP/Athletics Amy Rhodes
Ath Dir Ben Sandlin
bsandlin@wcboe.org
School phone (410) 677-5141
AD phone (410) 677-5128

2. MARDELA JR-SR

24940 Delmar Rd.
Mardela Springs 21837
Principal Liza Hastings
VP/Athletics Michael Campbell
Ath Dir Kory Shiles
kshiles@wcboe.org
School phone (410) 677-5142
AD phone (410) 677-5168

MPSSAA SCHOOL DIRECTORY

3. PARKSIDE

1015 Beaglin Park Dr.
Salisbury 21804
Principal Tara O'Barsky
VP/Athletics Brian Briggs
Ath Dir Kimberly Pelot
kpelot@wcboe.org
School phone (410) 677-5143
AD phone (410) 677-5106

4. WICOMICO

201 Long Ave.
Salisbury 21804
Principal Ron Greene
VP/Athletics Ken Popp
Ath Dir Stosh Schtierman
ischtie@wcboe.org
School phone (410) 677-5146
AD phone (410) 677-5146

WORCESTER COUNTY

COORDINATOR OF ATHLETICS

Sam Slacum
6270 Worcester Hwy.
Newark 21841
Phone (410) 632-5007

1. STEPHEN DECATUR

9913 Seahawk Rd.
Berlin 21811
Principal Tom Sites
Ath Dir Dan Dobronz
drdobronz@worcesterk12.org
School phone (410) 641-2171
AD phone (410) 641-1574

2. POCOMOKE

1817 Old Virginia Rd.
Pocomoke City 21851
Principal Jenifer Rayne
Ath Dir Derrick Fooks
dsfooks@worcesterk12.org
School phone (410) 632-5180
AD phone (410) 632-5195

3. SNOW HILL

305 S. Church St.
Snow Hill 21863
Principal Kimberly Purvis
Ath Dir Chris Adkins
CAdkins@worcesterk12.org
School phone (410) 632-5270
AD phone (410) 632-5284

RESIDENTIAL FACILITIES

1. The SEED School of Maryland

200 Font Hill Avenue
Baltimore 21223
Head of School Kirk Sykes
Ath Dir Canute Curtis
ccurtis@seedschoolmd.org
School phone (410) 843-9477
AD phone (410) 843-9477, x717

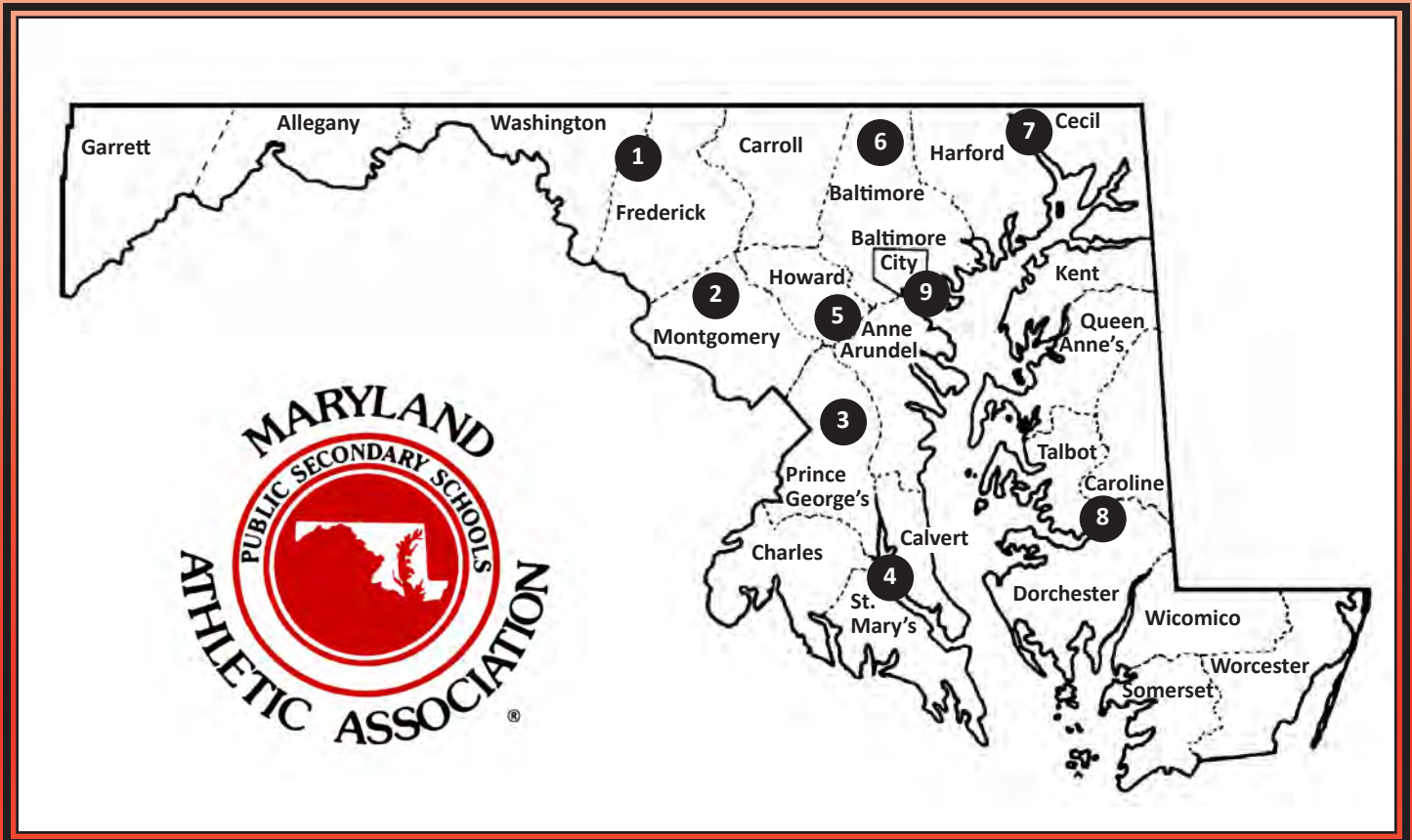
MINDS IN MOTION

The Minds in Motion certificate is a scholar-athlete honor roll award provided by the MPSSAA to every school on request. Certificates are to be distributed following each of the three sports seasons by high school athletic departments to those student-athletes who achieve a 3.25 GPA, or higher, while participating in a school-sponsored sport.



To order your school's Minds in Motion Certificates, School Athletic Directors should contact the MPSSAA office or go to:
www.mpssaa.org/membership-services

DISTRICTS OF THE



MARYLAND PUBLIC SECONDARY SCHOOLS ATHLETIC ASSOCIATION